

HeartBIT

Kit Data Sheet

SPECIFICATIONS

- > **Sampling Rate:** 1, 10, 100 or 1000Hz
- > **Analog Ports:** 4 in (10-bit) + 2 in (6-bit)
- > **Digital Ports:** 4 in (1-bit) + 4 out (1-bit)
- > **Communication:** Bluetooth 2.0+EDR
- > **Range:** up to ~10m (in line of sight)
- > **Sensors:** ECG; ACC
- > **Actuators:** LED
- > **Size:** 87x60x6mm
- > **Battery:** 500mA 3.7V LiPo (rechargeable)
- > **Consumption:** ~65mA (everything active)
- > **Accessories:** 3-lead cable (EMG/ECG); 3 electrodes

FEATURES

- > Perfect for biosignal exploration
- > Basic biosignals on a limited budget
- > All-in-one system
- > Snappable blocks
- > Raw data acquisition
- > On-board battery charger
- > Easy-to-use
- > Affordable

APPLICATIONS

- > Biomedical projects
- > Computer science
- > Electrical engineering
- > Human-Computer Interaction
- > Physiology studies
- > Biomechanics

GENERAL DESCRIPTION

Our entry-level HeartBIT kit includes a basic set of sensors in a ready-to-use format, making it ideal for people looking to give the first steps in the world of biosignals on a limited budget. All the blocks are pre-connected, and the kit includes all the accessories needed to get started, namely the hardware modules, battery, cables, and electrodes. Along with our OpenSignals software, provides instant visualization and recording of heart (electrocardiography) and motion (accelerometer) biosignal data.

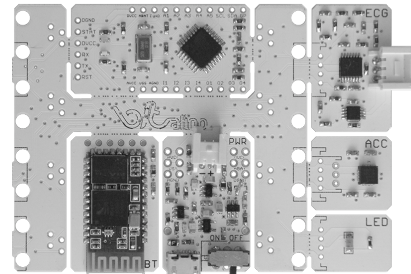


Fig. 1. All-in-one design ready to use out-of-the-box.



Fig. 2. Create Holter-like low-cost biomedical devices.



Fig. 3. Parts and accessories included in the kit.

bitalino

PLUX – Wireless Biosignals, S.A.
Av. 5 de Outubro, n. 70 – 8.
1050-059 Lisbon, Portugal
bitalino@plux.info
<http://bitalino.com/>

REV A

© 2015 PLUX 

This information is provided "as is," and we make no express or implied warranties whatsoever with respect to functionality, operability, use, fitness for a particular purpose, or infringement of rights. We expressly disclaim any liability whatsoever for any direct, indirect, consequential, incidental or special damages, including, without limitation, lost revenues, lost profits, losses resulting from business interruption or loss of data, regardless of the form of action or legal theory under which the liability may be asserted, even if advised of the possibility of such damages.



BEWARE: DIRECT OR INDIRECT COUPLING TO THE MAINS MAY RESULT IN SHOCKING HAZARD

