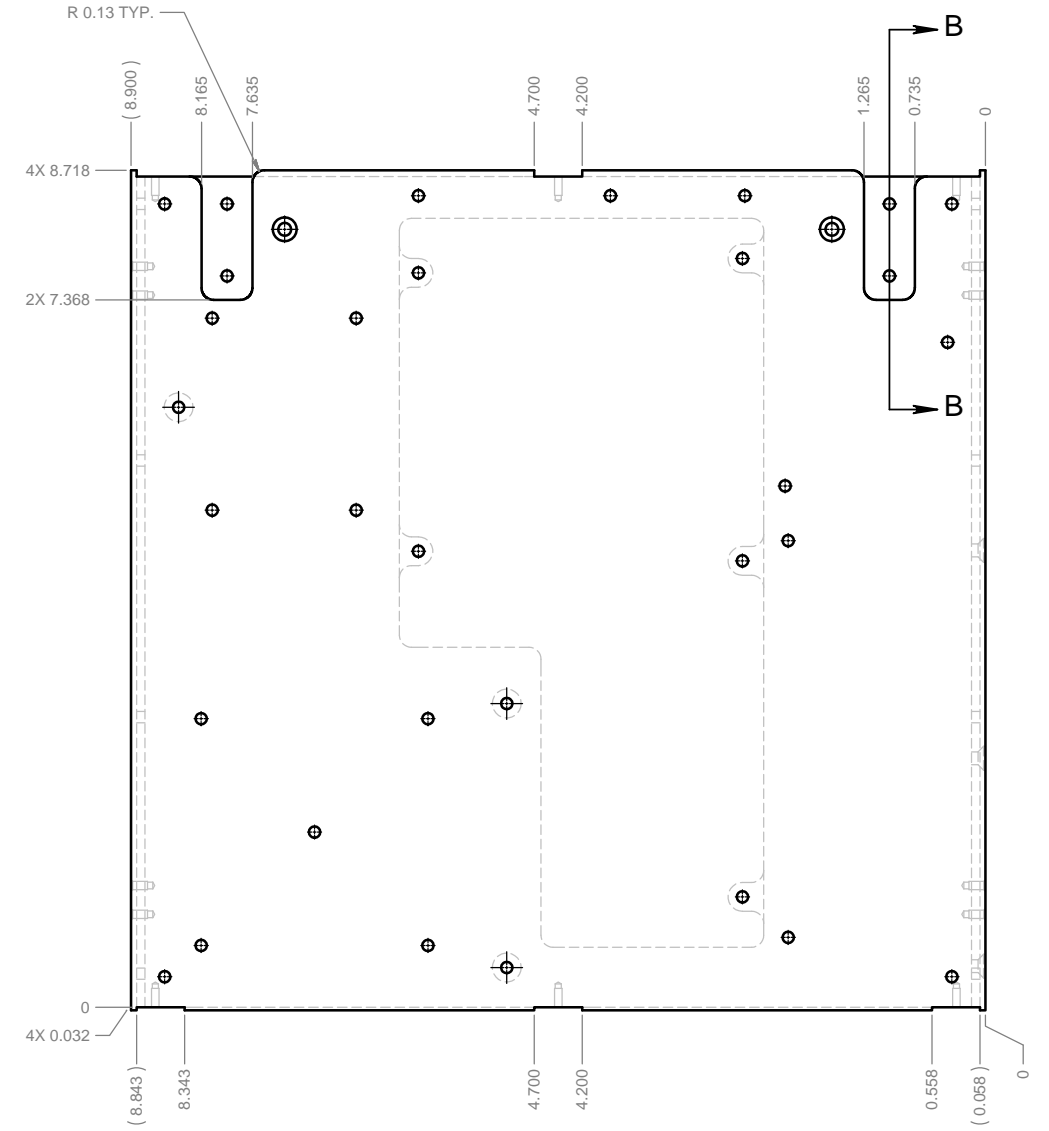
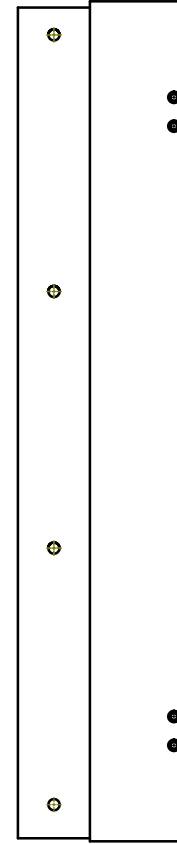
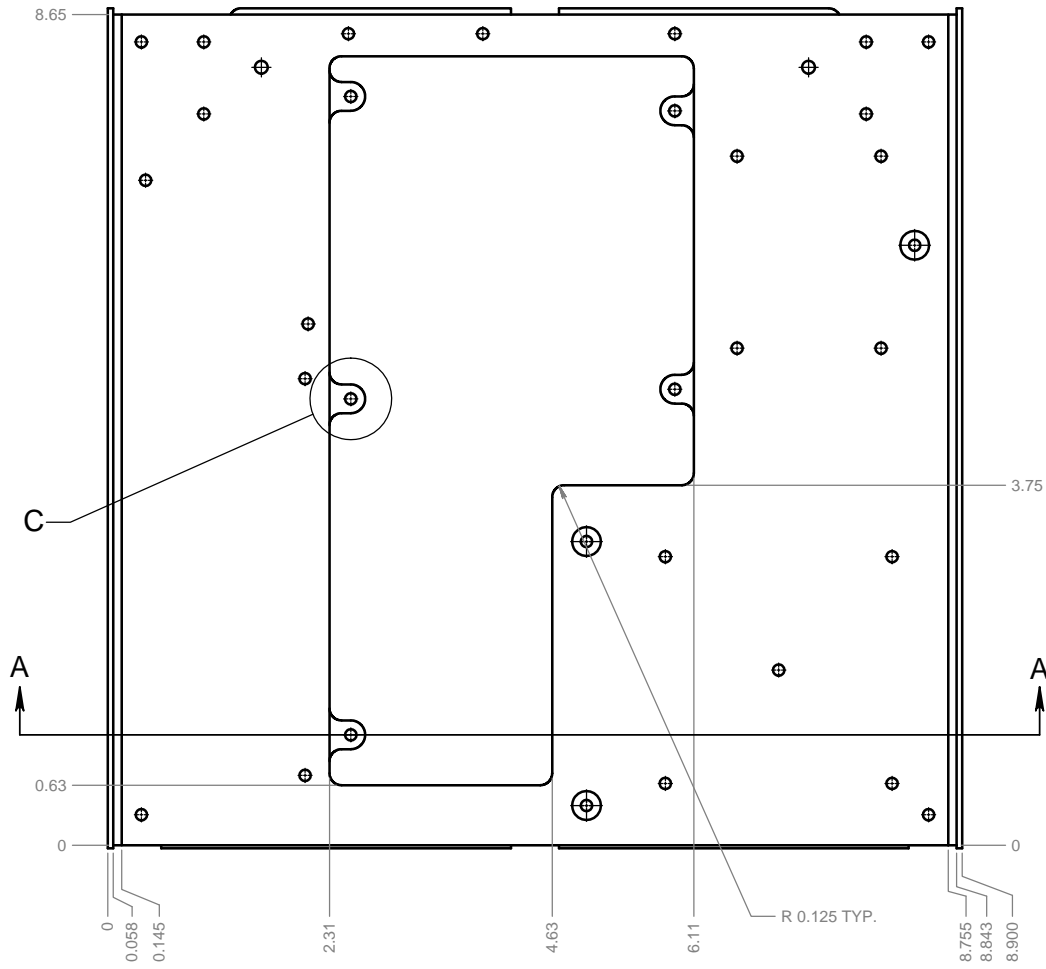
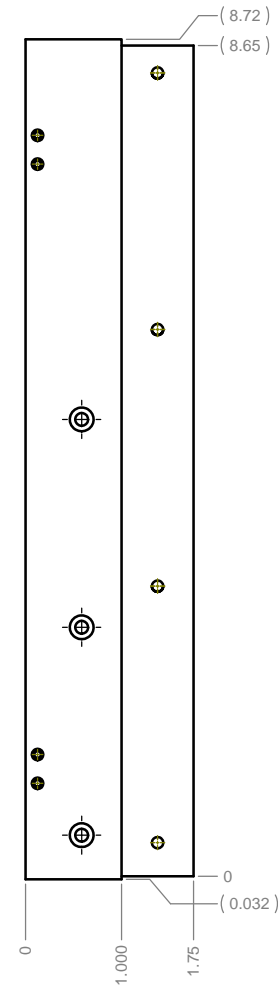


REV		DESCRIPTION	DATE	APPROVED
1		INITIAL SKETCH	10-03-17	J. DEMERS



NOTES: UNLESS OTHERWISE SPECIFIED

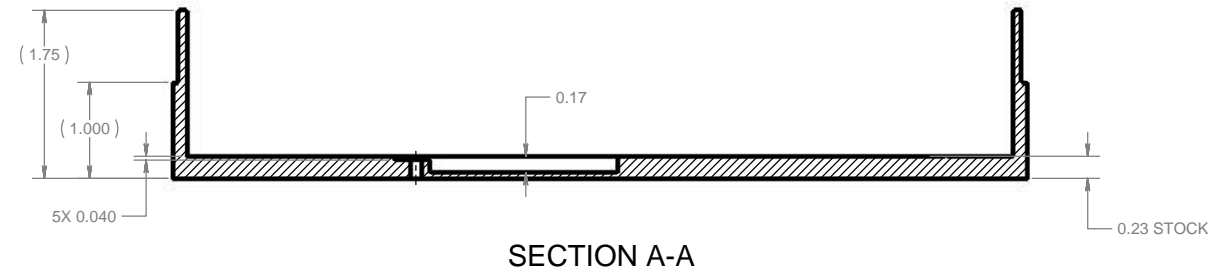
1. MATERIAL: 6061-T ALUMINUM EXTRUSION  
 SUGGESTED SOURCE:  
 COLTWELL INDUSTRIES, INC  
 OPEN DIE CHANNEL EXTRUSION, TAPERED LEGS, ALUM. STD, 9 IN WD x 2.43 IN HT

2. FINISH: TRIVALENT CHROMIUM COAT WITH SERTEC650-CHROMITAL TCP, CORROSION LEVEL III PER ASTM-B117,  
 COLOR: CLEAR, APPEARANCE: BRIGHT.  
 OPTIONAL FINISH: CHEMICAL CONVERSION PER MIL-DTL-81706, TYPE II, CLASS 3, COLOR: CLEAR.

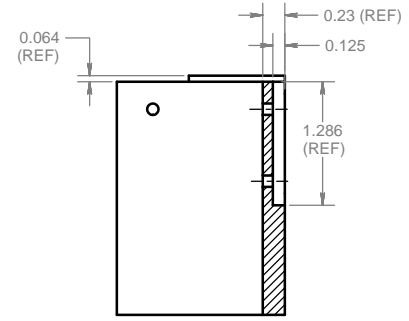
3. ALL MATERIALS REQUIRED TO BE RoHS AND WEEE COMPLIANT PER EUROPEAN DIRECTIVES 2002/95/EC AND 2002/96/EC INCLUDING ALL AMENDMENTS AND COMMISSION DECISIONS MADE THEREAFTER.

UNLESS OTHERWISE SPECIFIED DIMENSIONS ARE IN INCHES & PER ANSI Y14.5M - 1994		DRAWING GENERATED USING SOLIDWORKS 2004		TITLE	
ANGLES: ±0.5° .XX ±0.01 .XXX ±0.005		APPROVED	DATE		
THIRD ANGLE OF PROJECTION		DESIGNED BY: J. DEMERS	10-02-19		
		DRAWN BY: S. CISNEROS	10-03-03		
USED ON:		CHECKED BY: J. DEMERS	10-03-04	SIZE	SCALE:
FINISH:		APPROVED BY: J. DEMERS	10-03-04	DWG NO.	REV
MATERIAL:					

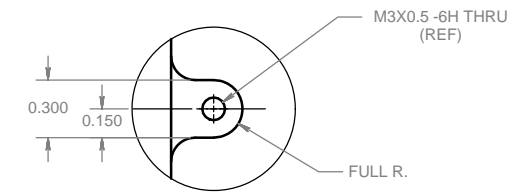
REVISIONS		DATE	APPROVED
REV	DESCRIPTION		
	SEE SHEET 1		



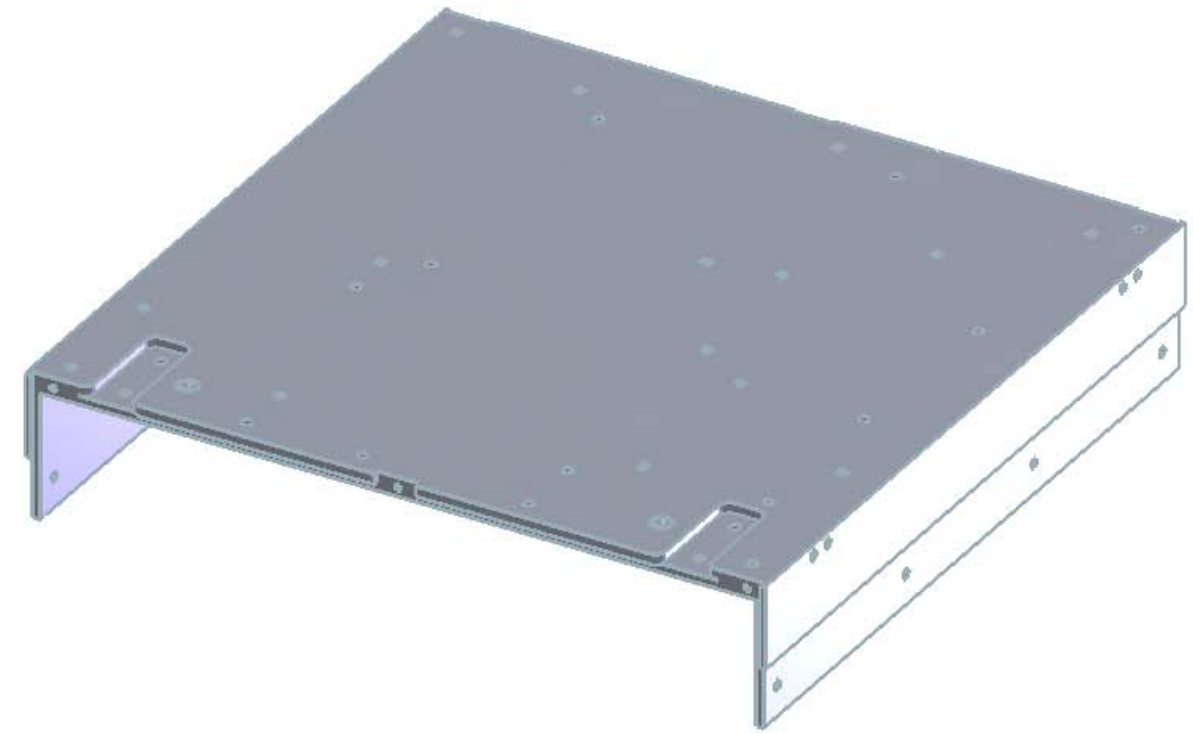
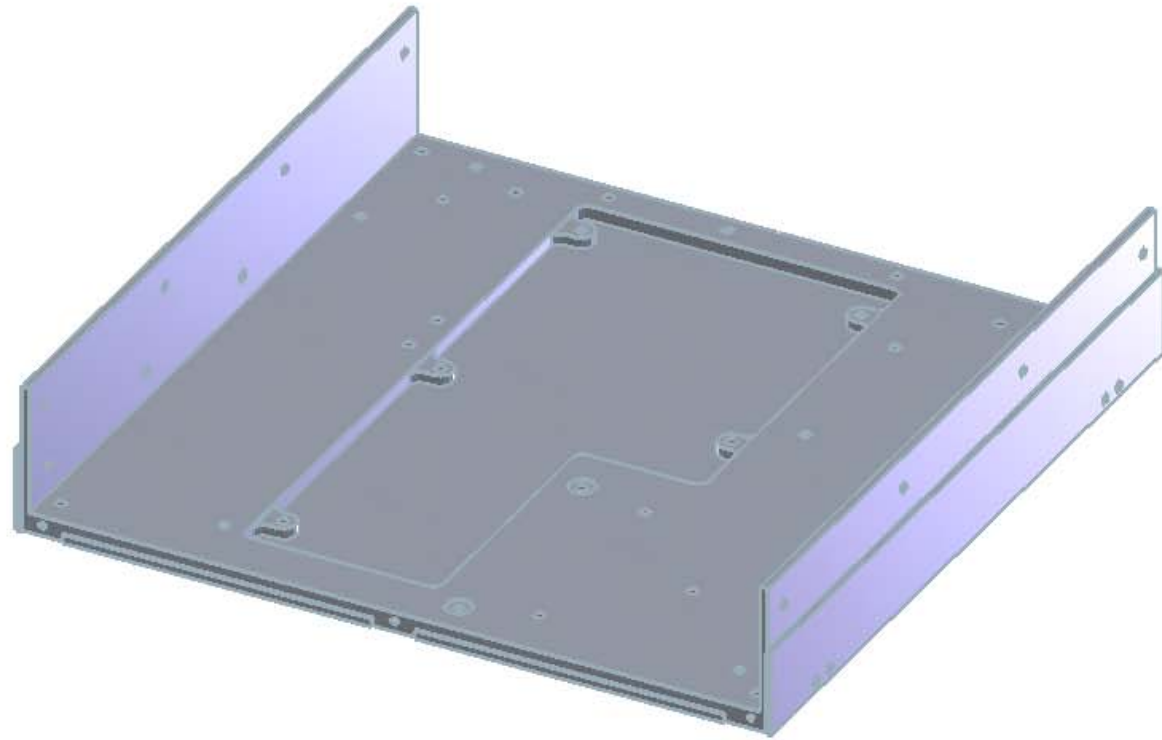
SECTION A-A



PARTIAL SECTION B-B  
2 PLCS.

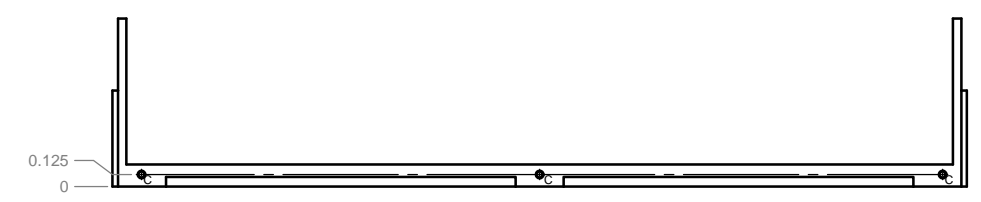
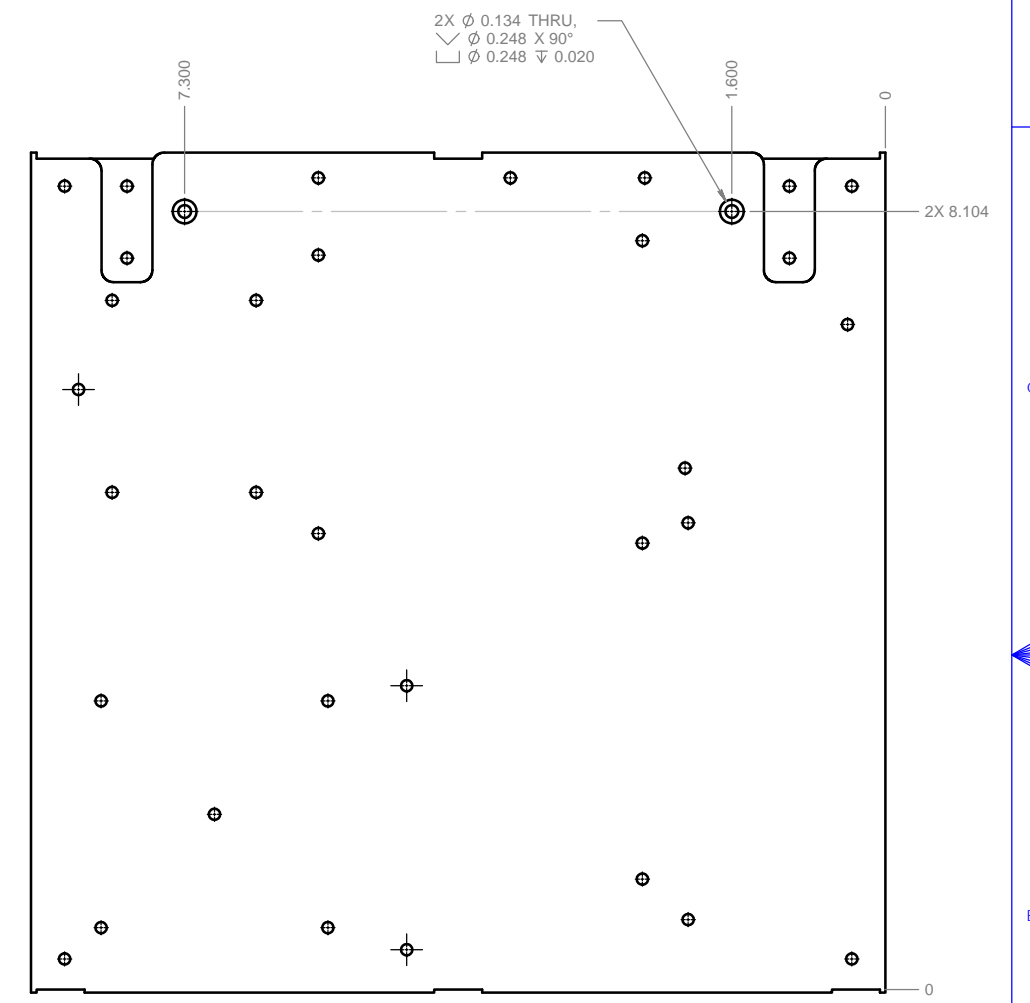
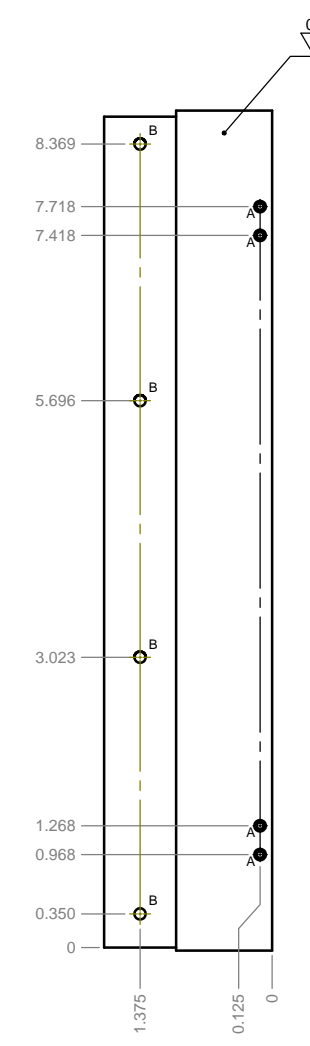
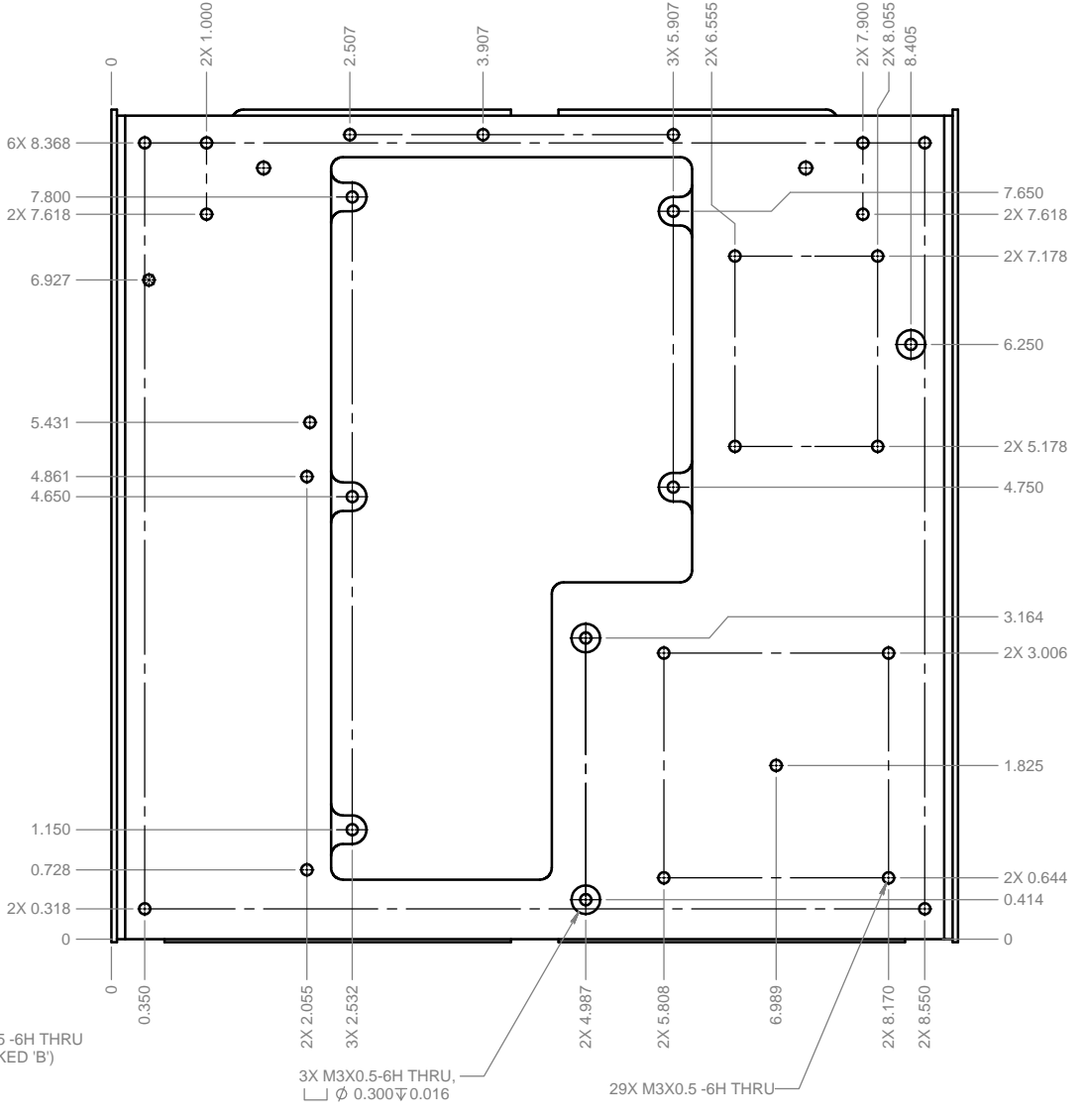
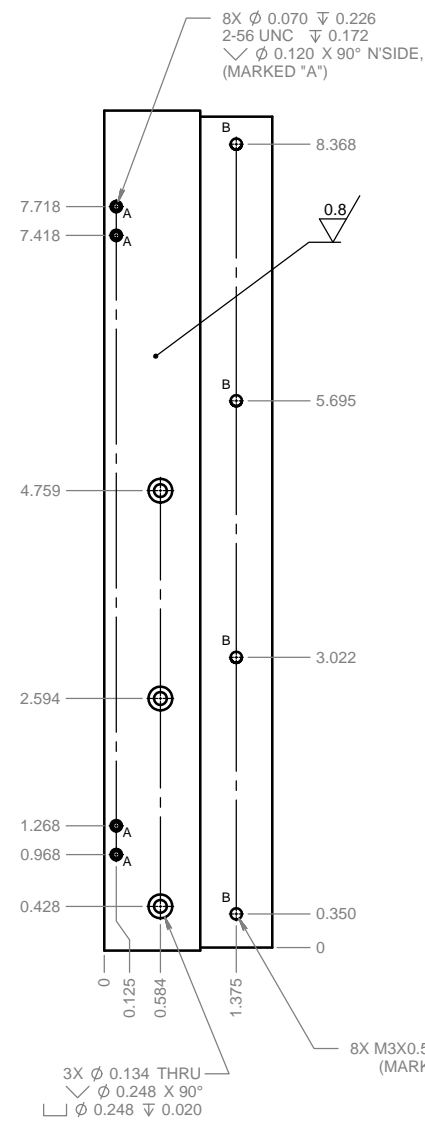
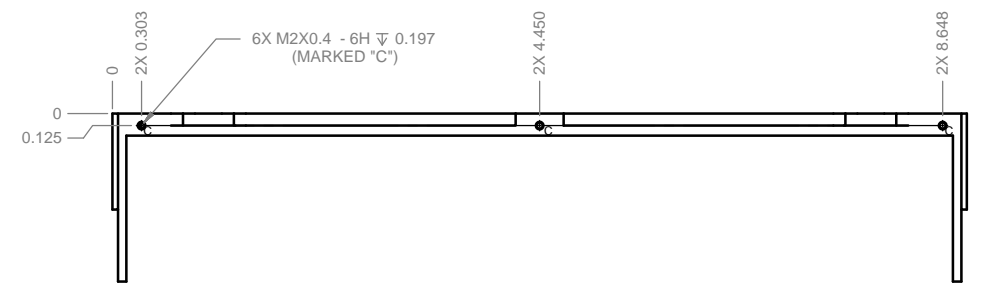


DETAIL C  
SCALE 2X  
5 PLCS.



TITLE			
SIZE	SCALE:	DWG NO.	REV
D			

REVISIONS			
REV	DESCRIPTION	DATE	APPROVED
	SEE SHEET 1		



DIMENSIONS SHOWN ARE FOR HOLE SIZE AND LOCATIONS ONLY  
FOR PART FEATURES SEE PREVIOUS SHEETS

TITLE			
SIZE	SCALE:	DWG. NO.	REV
D			