

Intrusion detection and logging system

Triggy can generate a remote notification via IFTTT or send an email through internet connection in order show that a door or a window has just been opened.


A T-Node also records locally the date and time for each opening/closing (up to 30 entries) without requiring any connection with an Android device, a.k.a. the "displacement recording" function. The logs can be looked at later, once near to the T-Node.

Scenario 1

Being away from home, you want to be alerted in case of intrusion, so as to warn a neighbor for instance or to simply feel reassured. Use the rule below which generates an IFTTT event in case of T-Node displacement. The IFTTT event has to be linked to an IFTTT Notification which will be generated from the cloud. Need a Home Android Device.

Event - Displaced
Always
Triggered immediately

Action - IFTTT event / Event name
"door_opened" / IFTTT action: notification




Scenario 2

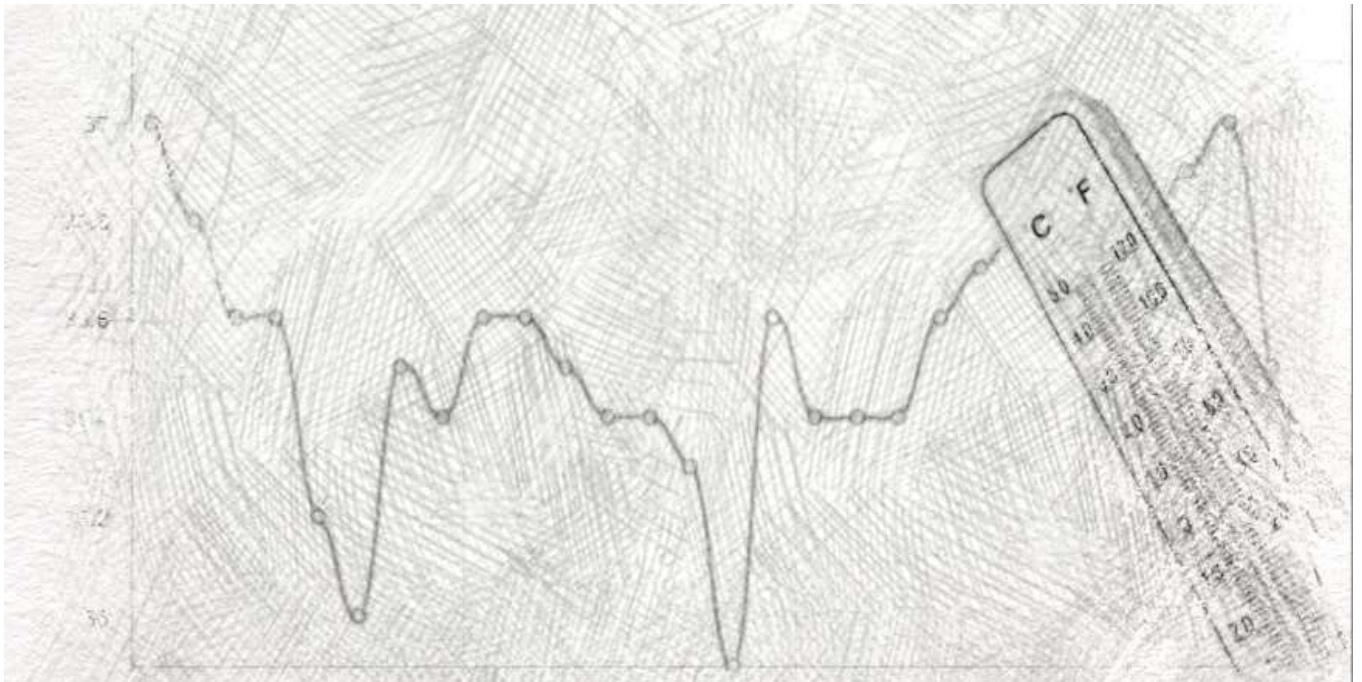
Some burglars do not hesitate to get into a house even when their owner are asleep. The following rule allows to ring a phone when a door equipped with a T-Node is opened between 23:00 and 6:00

Event - Displaced
Only between 23:00 and 06:00
Triggered immediately

Action - Ringtone / Duration 0m 20s /
Message "Intrusion"



Thermometer with recording function



All T-Nodes indicate the current temperature and store locally the measurements of the last 48 hours. Then the connection to an Android device allows to update the temperature history over a period of up to 6 months. It is only needed to connect the device to the T-Node at least once every two days to have the full set of temperatures over a long period.

The Triggly Hub application allows to display the temperature history at a given place in the form of a graph, over a day, a week or a month.

Emergency SMS



In a dangerous situation or in case of emergency, composing and sending an SMS to warn a close relative becomes a loss of precious seconds or it can be even impossible to do it. These situations are a medical emergency when alone (in particular for a senior), a bad fall, a physical aggression...

A press on a T-Node's button can trigger sending a predefined SMS to one or several numbers. This can be cleverly combined with one of these applications that allows you to share your real-time location with close relatives, in order to easily indicate your position.

Scenario

A long press (> 2s) on the T-Node's button will send an SMS to two predefined numbers (Mom and Uncle John).

Event - Button click (long type)

Always

Triggered immediately



Action - Send SMS / Contact "Mom" /

Message: "I'm in an emergency situation.

Try to locate me."

Event - Button click (long type)

Always

Triggered immediately

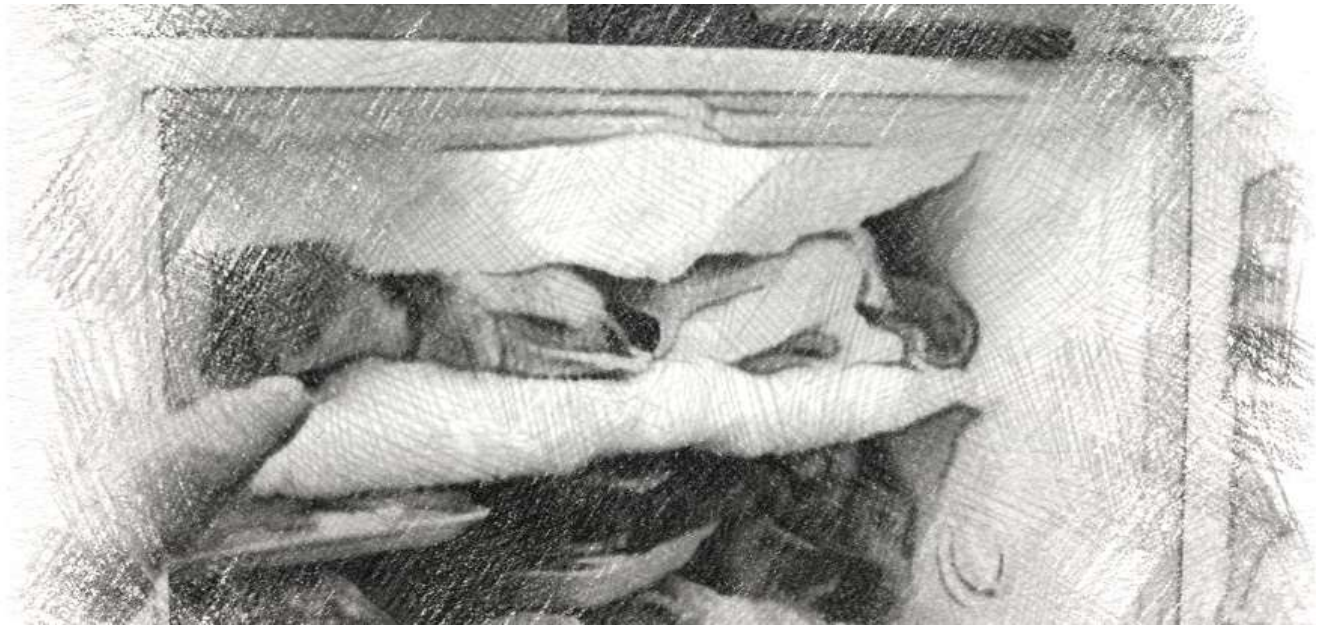


Action - Send SMS / Contact "Uncle John" /

Message: "I'm in an emergency situation.

Try to locate me."

Fridge/freezer door alarm




You probably know this situation: the freezer is full of frost because the door has been left half-open. As for a fridge, this is really annoying because the cold chain has been broken. In order to avoid this problem, a T-Node can be put on the door of the fridge or freezer. When it detects that the door is open for an abnormal long time, your Android device will generate an alarm.

Scenario

A T-Node is put on the closed door of the freezer, which is its reference position. When activating the rule below, if the door remains open (even slightly) for more than one minute the phone will ring.

Event - Displaced
Always
Event maintained: 1m 0s

Action - Ringtone / Duration 0m 45s /
Message: "Freezer door left open!"



Note - In order to detect a small opening of the door, the displacement sensitivity should be increased in the T-Node parameters.

A handy reminder



If you are part of those people who quickly forget that they had something to do, this usage of Triggy can be really helpful. Indeed, if at a given time you know that you have to do something half an hour later, how being sure remembering it at the expected time?

Well, click the button of a T-Node close at hand (such as the one attached to your key ring) to generate later a notification on your smartphone, reminding you to do something.

Scenario

Along with both rules below, a single click on the T-Node will trigger a notification 15 minutes later. A double click will do the same but 1 hour later.

Event - Button click (single click)

Always

After: 0h 15m 0s



Action - Notification /

Message: "15 min reminder!"

Event - Button click (double click)

Always

After: 1h 0m 0s



Action - Notification /

Message: "1 hour reminder!"