

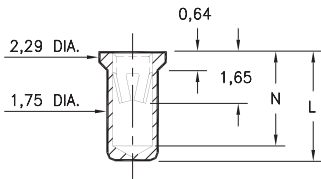
# PIN RECEPTACLES

FOR 0,94 - 1,09 DIAMETER PINS

## 0331/9353

X3XX-0-15-XX-18-XX-10-0

Solder mount in 1,80 min. mounting hole  
Also available on 24mm wide carrier tape:  
1,000 parts per 330mm reel  
Order as: X3XX-0-57-XX-18-XX-10-0

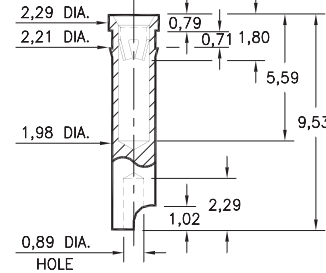


Basic Part Number	Length L	Depth N
0331-0	3,81	3,23
9353-0	4,32	3,73

## 7405

7405-0-18-XX-18-XX-10-0

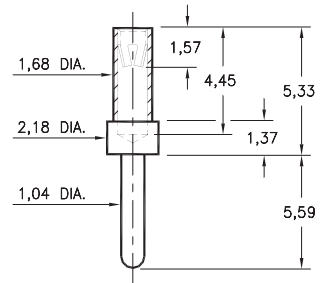
Press-fit in 2,13 mounting hole  
Accepts wire sizes up to 0,64 dia.



## 3450

3450-0-15-XX-18-XX-04-0

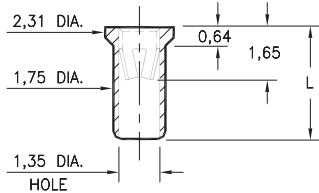
Solder mount in 1,09 min. mounting hole



## 9354/7406

XXXX-0-15-XX-18-XX-10-0

Solder mount in 1,80 min. mounting hole  
Also available on 24mm wide carrier tape:  
1,400 parts per 330mm reel  
Order as: XXXX-0-57-XX-18-XX-10-0

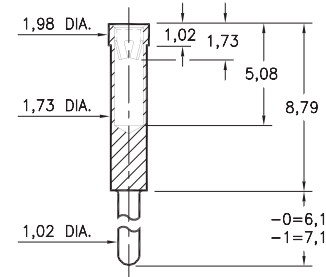


Basic Part Number	Length L
7406-0	3,05
9354-0	4,32

## 0319

0319-X-15-XX-18-XX-04-0

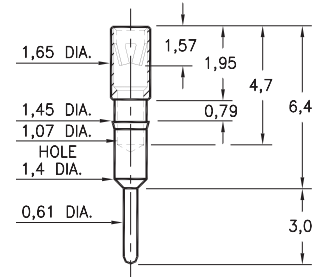
Solder mount in 1,07 min. mounting hole



## 1313

1313-0-15-XX-18-XX-04-0

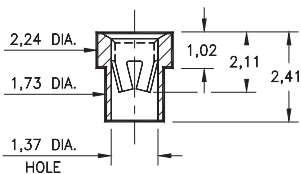
Press-fit in 1,42 mounting hole



## 3520

3520-0-15-XX-18-XX-10-0

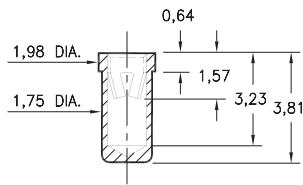
Solder mount in 1,78 min. mounting hole



## 8331

8331-0-15-XX-18-XX-10-0

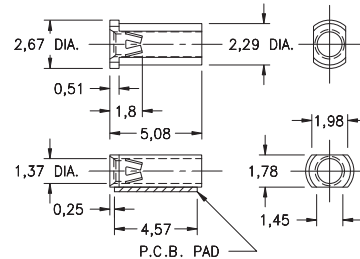
Solder mount in 1,80 min. mounting hole



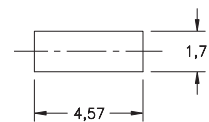
## 6628

6628-0-18-XX-18-XX-10-0

Surface mount  
Also available on 12mm wide carrier tape:  
3,700 parts per 330mm reel  
Order as: 6628-0-58-XX-18-XX-10-0



P.C.B. Layout



### SPECIFICATIONS:

**Shell Material:** Brass Alloy 360, 1/2 Hard

**Contact Material:** Beryllium Copper Alloy 172, HT

**Dimensions:** Millimeters

**Tolerances On:** Lengths: ±0,13

Diameters: ±0,051

Angles: ±2°



**ORDER CODE:** XXXX - X - 1X - XX - 18 - XX - XX - 0

**BASIC PART #**

**SPECIFY SHELL FINISH:**

01 5,08µm TIN/LEAD OVER NICKEL

◆ 80 5,08µm TIN OVER NICKEL (RoHS)

◆ 15 0,25µm GOLD OVER NICKEL (RoHS)

**SPECIFY CONTACT FINISH:**

01 5,08µm TIN/LEAD OVER NICKEL

◆ 80 5,08µm TIN OVER NICKEL (RoHS)

◆ 27 0,76µm GOLD OVER NICKEL (RoHS)

**SELECT CONTACT:**

#18 CONTACT (DATA ON PAGE 257)

(For alternate contact choices, see group L on page 248)

