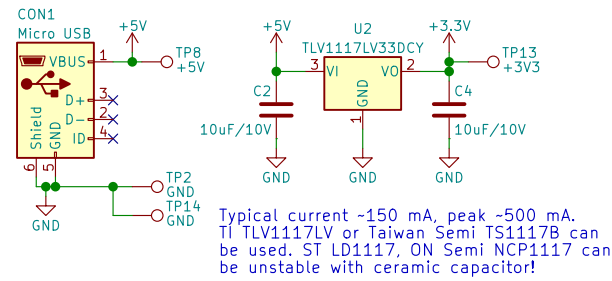
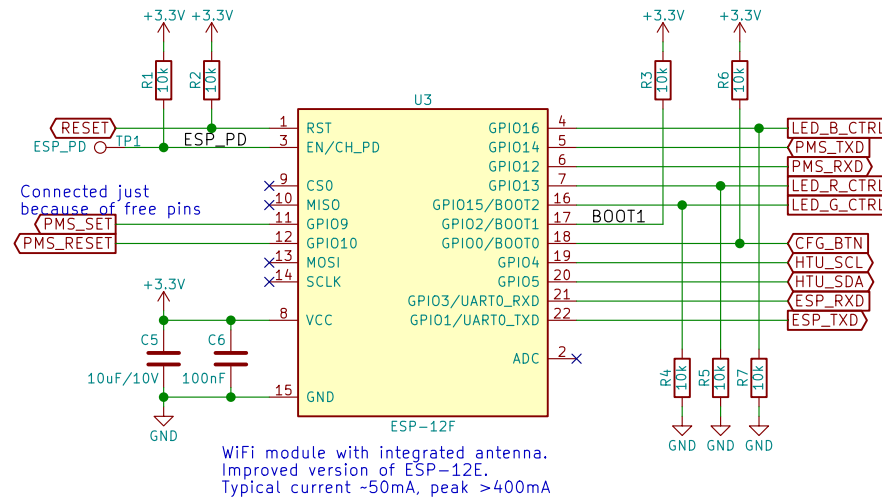


Power supply

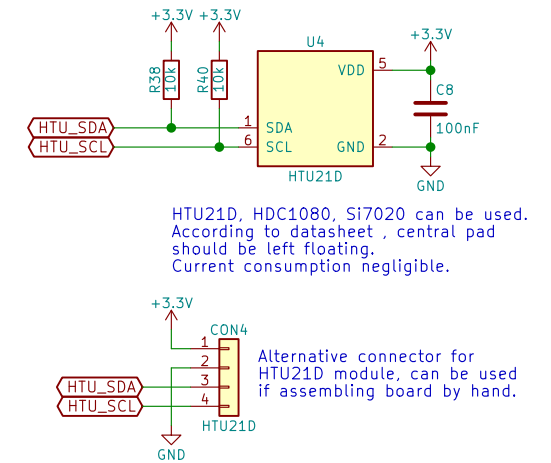
Default power supply input – micro USB charger.
500mA minimum.



WiFi/processing module

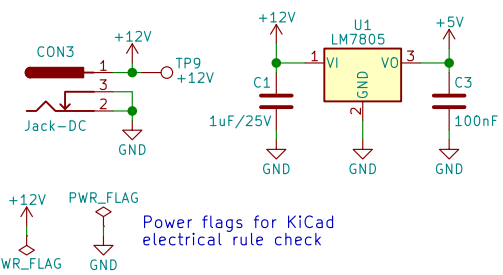


Humidity and temperature sensor

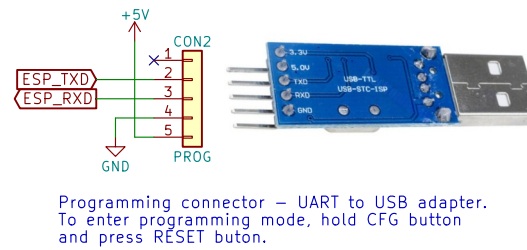


Optional power supply input

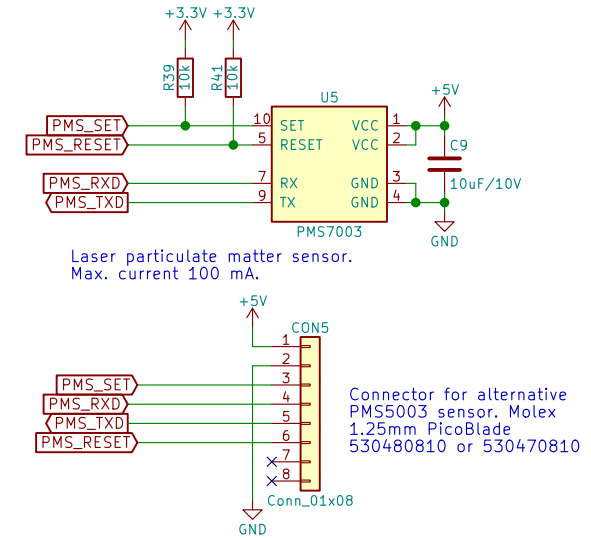
Optional power supply input – 2.1x5.5 DC barrel jack.
Jack and LM7805 is not installed by default.



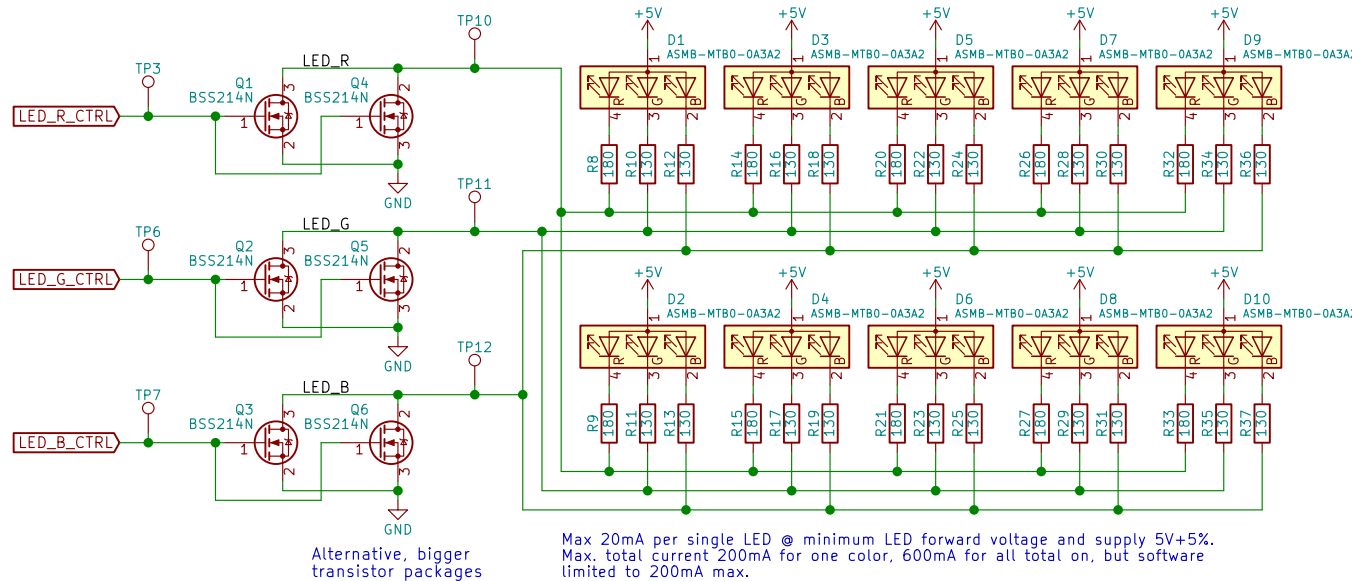
Programming connector



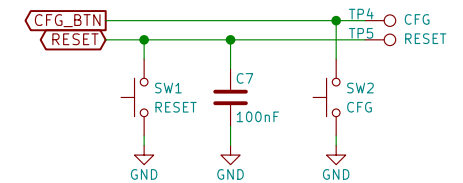
Particulate matter sensor



LEDs



Buttons



Less-Smog

Sheet: /
File: sensor.sch

Title: ESP8266 Air Quality Sensor

Size: User Date:
KiCad E.D.A. kicad 4.0.7

Rev:
Id: 1/1