

1 2 3 4 5 6 7 8 9

A

A

B

B

C

C

D

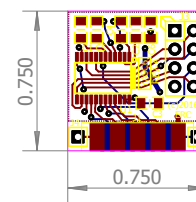
D

E

E

F

F



FABRICATION NOTES:

1. For PCB artwork, refer to file-set "ERC\_YASC6\_REV-A\_GERBER.ZIP"
2. Card profile:
  - Finished PCB thickness: 0.047" +/- 0.007" (1.2MM)
  - Layer count: 2
  - Electrical test: 100% testing required for shorts & opens
  - Silkscreen: Both sides.
  - Card shall be 100% electrically tested for shorts and opens using IPC-D-356 format netlist supplied with electronic media.

PCB STACKUP DETAIL:



(c)2016	<b>Edward R. Caceres</b>	
TITLE:	<b>"YASC6" Serial I/F Paddle 6-pin</b>	
Document Number:	<b>FAB-YASC6</b>	REV: <b>A</b>
Date:	REVISED 5-NOV-2016	Sheet: >SHEET