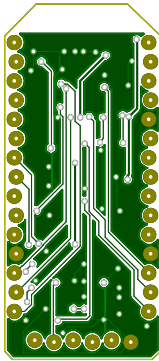


Michel Racic
GDG Zürich

Sheet:	
File: NINA-w102_minimal_breakout.kicad_pcb	
Title: ublox NINA-W102 minimal breakout	
Size: A4	Date: 2018-04-22
KiCad: E.D.A.	kicad 4.0.7-e2-637660ubuntu17.10.1
4	5
4	5

1	A	B	C	D	6
2	A	B	C	D	6
3	A	B	C	D	6
4	A	B	C	D	6
5	A	B	C	D	6
6	A	B	C	D	6



Michel Racic
GDG Zürich

Sheet:
 File: NINA-W102_minimal_breakout.kicad_pcb

Title: ublox NINA-W102 minimal breakout

Size: A4

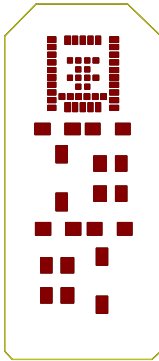
Date: 2018-04-22

Rev: 0.4

KiCad E.D.A. kicad 4.0.7-e2-637660ubuntu17.10.1

Id: 1/1

1	A		2	3	4	5	6
	A		B		C		D



Michel Racic
GDG Zürich

Sheet:

File: NINA-W102_minimal_breakout.kicad_pcb

Title: ublox NINA-W102 minimal breakout

Size: A4

Date: 2018-04-22

Rev: 0.4

KiCad E.D.A. kicad 4.0.7-e2-637660ubuntu17.10.1

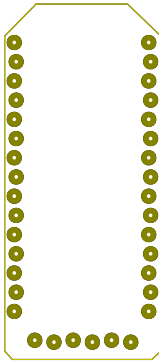
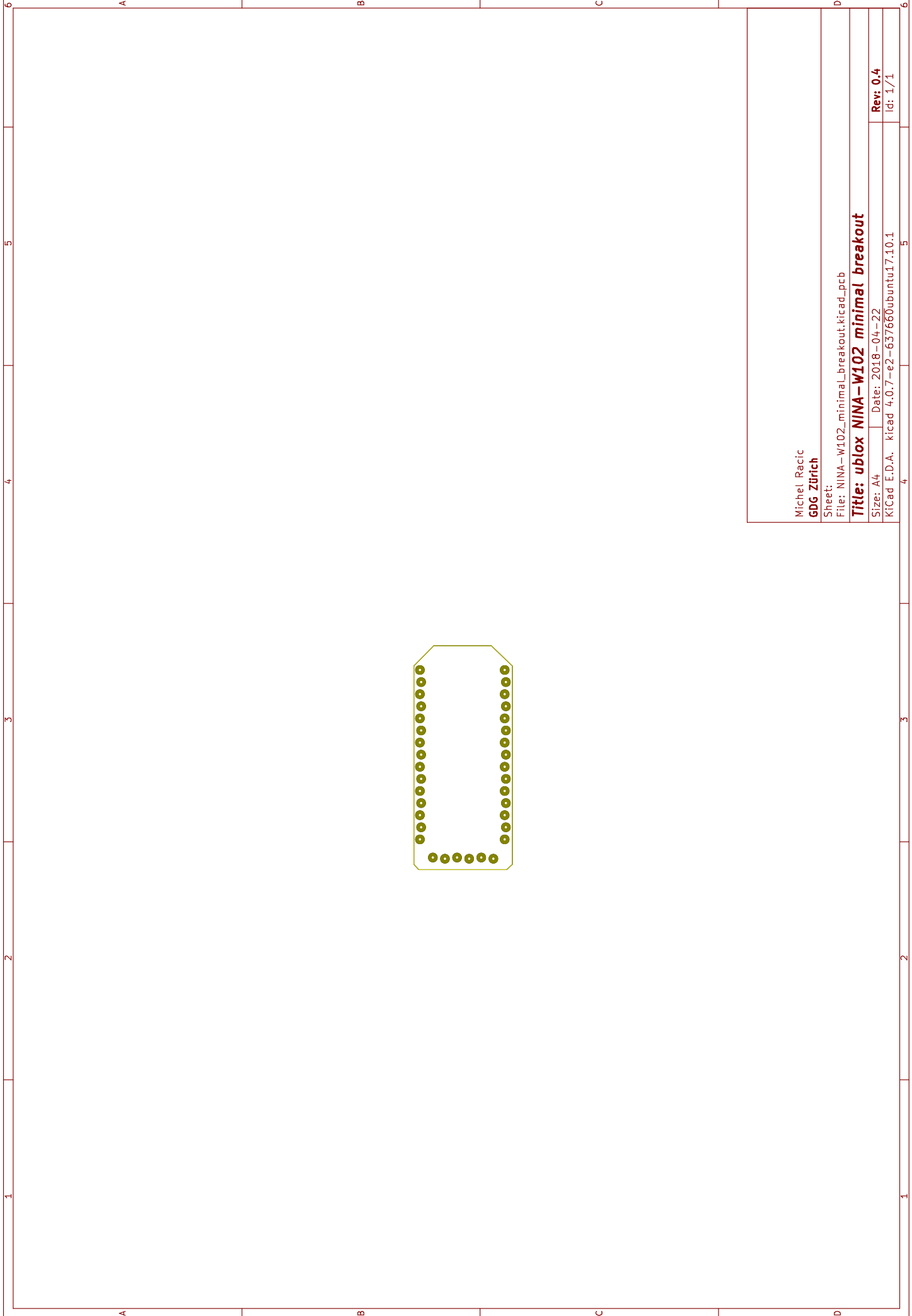
Id: 1/1

1	A		2	3	4	5	6
---	---	--	---	---	---	---	---

1	A	B	C	D	5	6
2	A	B	C	D	4	5
3	A	B	C	D	3	4
4	A	B	C	D	2	3
5	A	B	C	D	1	2
6	A	B	C	D	6	7



<p>Michel Racic GDG Zürich</p>	<p>Sheet: File: NINA-W102_minimal_breakout.kicad_pcb Title: ublox NINA-W102 minimal breakout Size: A4 Date: 2018-04-22 KICad: E.D.A. kicad 4.0.7-e2-637660ubuntu17.10.1 Rev: 0.4 Id: 1/1</p>
--	--



Michel Racic
GDG Zürich

Sheet:

File: NINA-W102_minimal_breakout.kicad_pcb

Title: ublox NINA-W102 minimal breakout

Size: A4

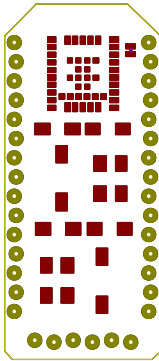
Date: 2018-04-22

Rev: 0.4

KiCad E.D.A. kicad 4.0.7-e2-637660ubuntu17.10.1

Id: 1/1

1	A	B	C	D	5	6
2	A	B	C	D	4	5
3	A	B	C	D	3	4
4	A	B	C	D	2	3
5	A	B	C	D	1	2
6	A	B	C	D	6	6



Michel Racic
GDG Zürich

Sheet:

File: NINA-W102_minimal_breakout.kicad_pcb

Title: ublox NINA-W102 minimal breakout

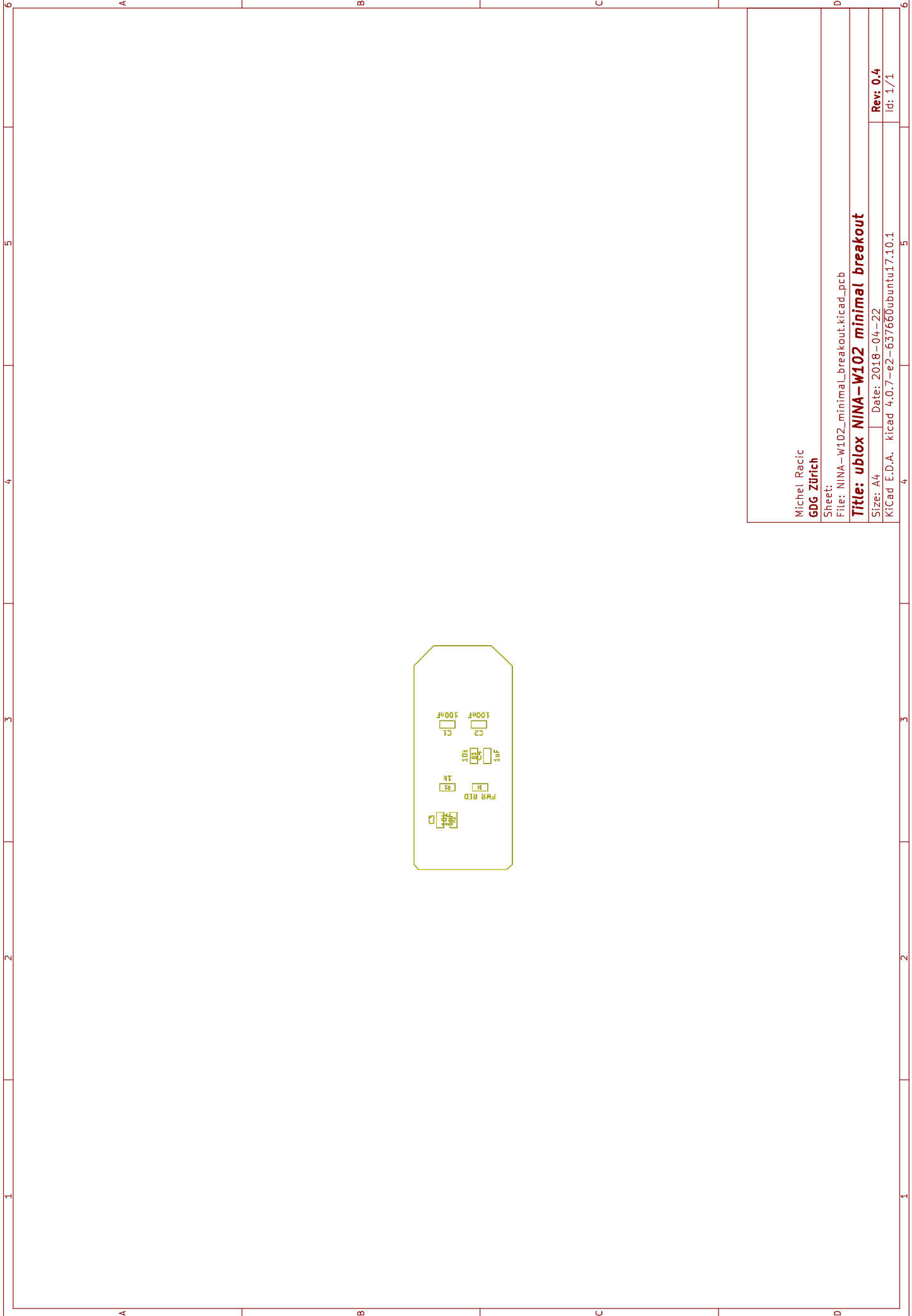
Size: A4

Date: 2018-04-22

Rev: 0.4

KiCad E.D.A. kicad 4.0.7-e2-637660ubuntu17.10.1

Id: 1/1



Michel Racic
GDG Zürich

Sheet:

File: NINA-W102_minimal_breakout.kicad_pcb

Title: ublox NINA-W102 minimal breakout

Size: A4

Date: 2018-04-22

Rev: 0.4

KiCad E.D.A. kicad 4.0.7-e2-637660ubuntu17.10.1

Id: 1/1