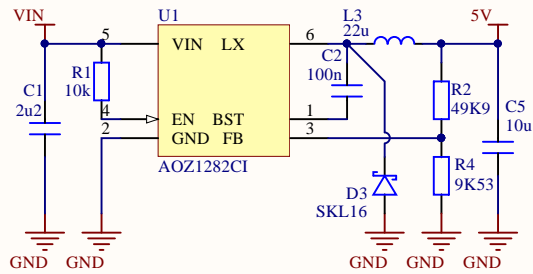
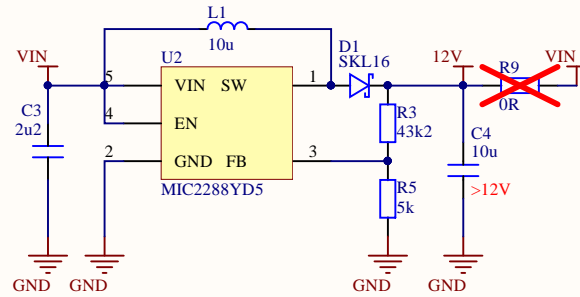


### 5V Step-Down Power supply



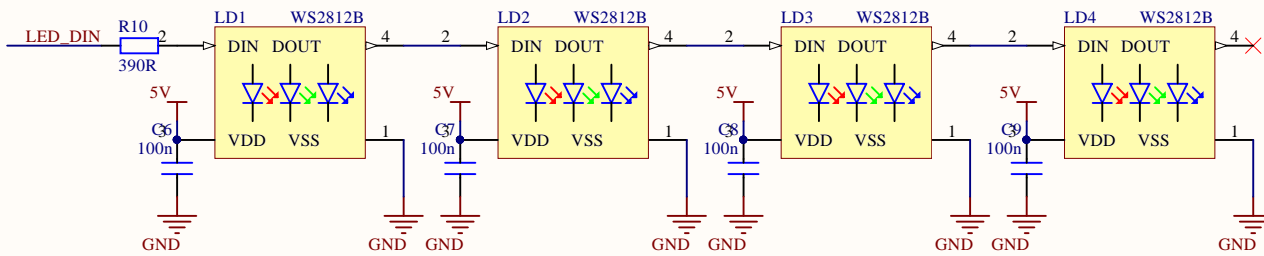
\*DNP if external 5V is supplied

### 12V Step-Up Power supply

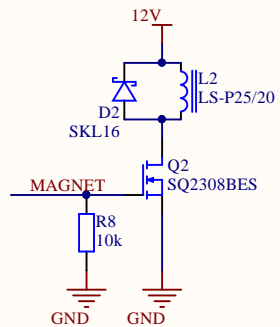


\*DNP if input voltage VIN > 10V

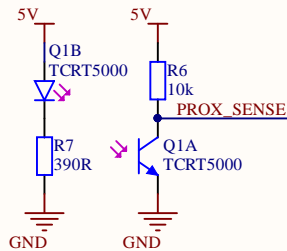
### RGB Led signalization



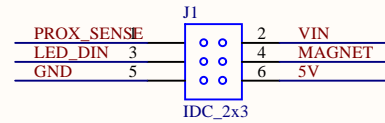
### Electromagnet control



### Load detection



### Load detection



Date: 5/29/2018 Revision: 1.0

Format: A4 Sheet 1 of 1

Project: Electromagnetic lifting module.PrjPcb

Title: Schematics.SchDoc

Drawn by: Milan



\*  
\*  
\*