
IN-12 BREAKOUT BOARD

Thank you for purchasing my IN-12 breakout board kit! I hope you're able to make something cool with the kit and I'd love to see your nixie projects! If you'd like to share them, feel free to drop me a line at [md.szyman@gmail.com]. Now, onto building!

STEP ONE: THE PARTS!

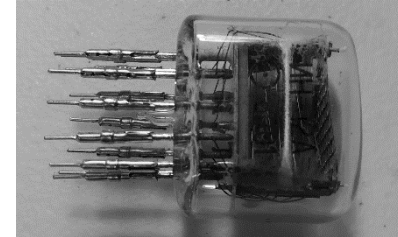
Make sure I didn't leave any parts out of your kit! For each board you ordered, you should receive:

- 1x IN-12 breakout board PCB
- 15x 0.1" (2.54mm) header pins in a single strip
- 1x 15k Ω resistor
- 12x gold plated Nixie tube pins
- 1x 2-pin header jumper

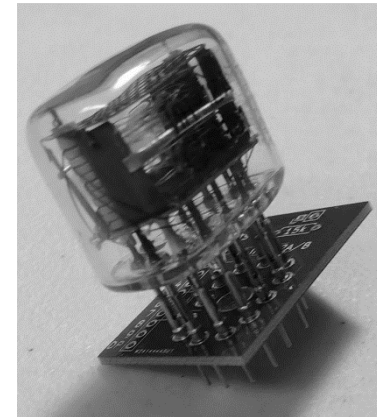
If you have any missing parts, please email me at [md.szyman@gmail.com] and I'll ship replacement parts to you, free of charge!

STEP TWO: INSTALLING THE NIXIE PINS

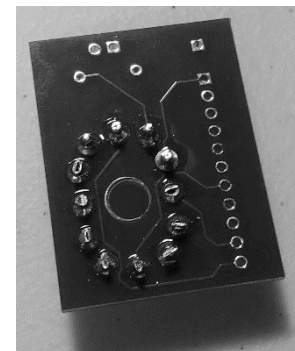
When installing the nixie tube pins, first put the pins onto the nixie tube.



Next, using the nixie tube to hold the pins in place, insert the assembly into the circuit board for soldering.

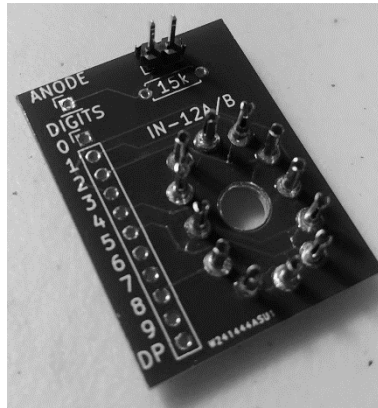


Then, solder the nixie tube pins into place and using a pair of snips, cut the excess pin length from the back side of the board.

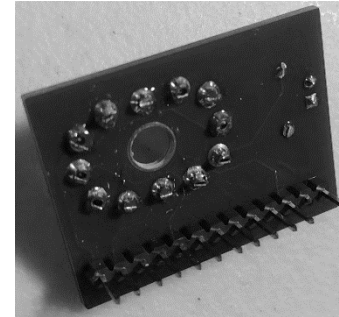


STEP THREE: JUMPER

Cut two header pins from the strip. Solder them onto the board, making sure they are soldered in position on the FRONT side of the board.



Solder these breadboard pins into their location on the board, making sure they are soldered in position on the BACK side of the board.



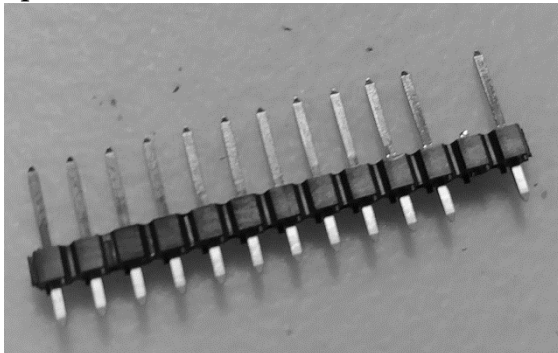
STEP FIVE: RESISTOR

Finally, solder the resistor into place on the board.



STEP FOUR: BREADBOARD PINS

Using the remaining pins, remove the second-to-last pin from the strip as shown.



And that's it! Thanks again for purchasing this kit, enjoy!