

MONITOR TANK WATER LEVEL OR ANY PLACES DISTANCE ON YOUR DESKTOP

USING WEMOS D1 AND ULTRA SONIC SENSOR AND IOT PLATFORM (THINGIO.AI)



FEATURES PRICING FAQ SUPPORT BLOG TUTORIAL API DOCS

LOGIN

REGISTER

Best IoT Platform for Raspberry Pi, NodeMCU and ESP8266 Projects

Create Stunning Dashboards and Vizualizations for your IoT Projects

Get Started


Watch Demo

Join Our Referral Program

Invite





 Continue with Google

or

SIGNUP TO GET INSTANT ACCESS.

Name

Enter Name

Email address

Enter email

Password

Retype Password

Contact Number*

Enter Mobile Number

I'm not a robot



I am continue with Google account

Then as your wish... 😊



Projects

+ Create new project



🔍 Search By Project Name

Ultra Sonic ⚙️

ID : 5bed77664139ed3c65cf25a7

Nov 15, 2018

🗨 View Project

LM35 ⚙️

ID : 5bece60e4139ed3c65cf1d61

Nov 15, 2018

🗨 View Project

Here I am already done with this project so it's showing Ultra Sonic.

So you have to create new project.





Projects

+ Create new project

Search By Project Name

LM35

ID : 5bece60e4139ed3c65cf1d61

Nov 15, 2018

View Project

Create A Project

Project Name

Create



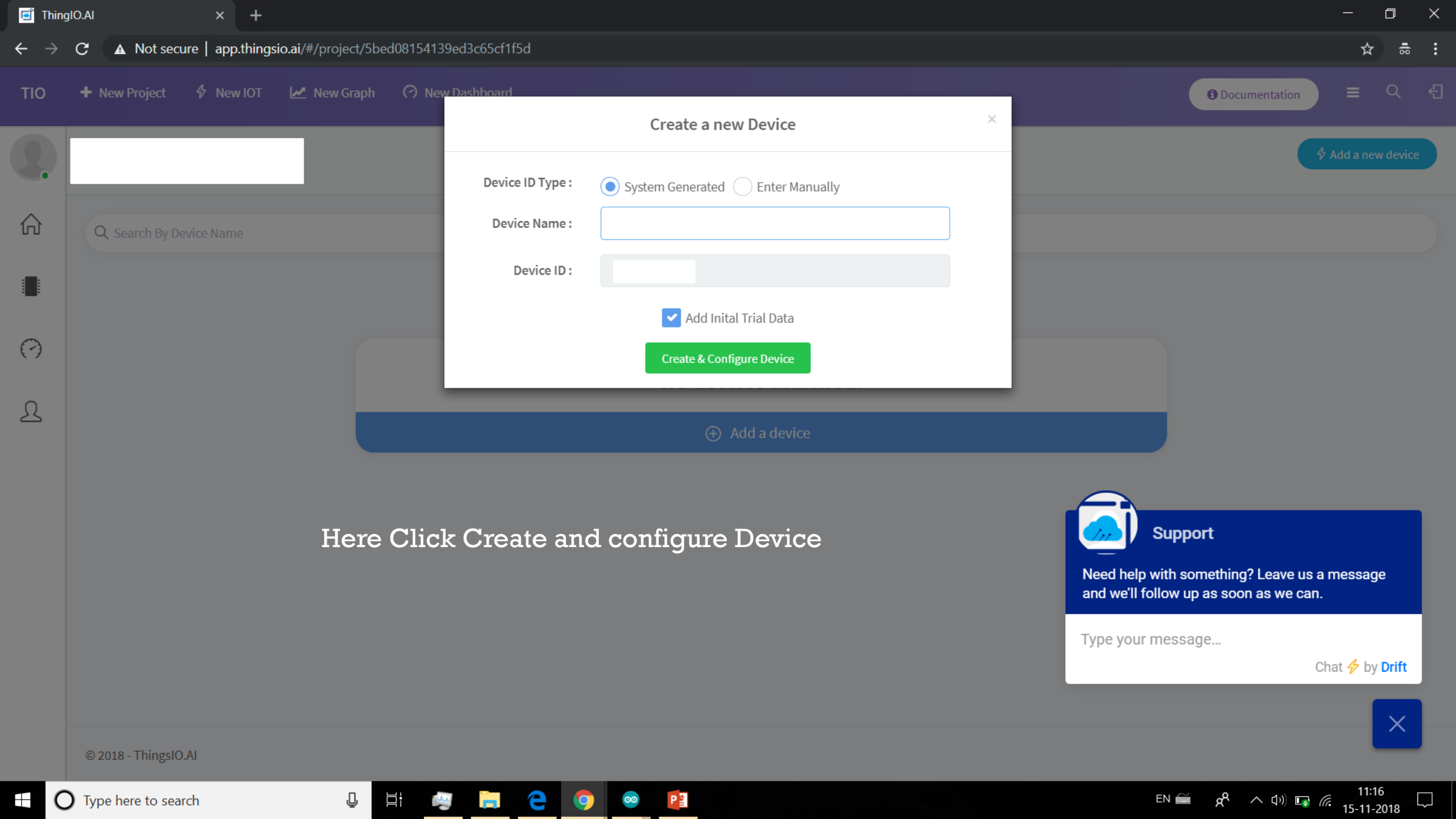
Support

Need help with something? Leave us a message and we'll follow up as soon as we can.

Type your message...

Chat ⚡ by Drift





Create a new Device

Device ID Type : System Generated Enter Manually

Device Name :

Device ID :

Add Initial Trial Data

Create & Configure Device

Here Click Create and configure Device



Support

Need help with something? Leave us a message and we'll follow up as soon as we can.

Type your message...

Chat by Drift





Configure Device - [redacted]

General

Device ID

Created - Nov 15, 2018
Updated - Nov 15, 2018

Parameters

<input type="text"/>	decimal	<input type="button" value="x"/>
<input type="text"/>	decimal	<input type="button" value="x"/>
<input type="button" value="Add a new property"/>		

Energy Parameter*

Transformation*

Argument*

Aggregate

And then click on Update Device

Support

Need help with something? Leave us a message and we'll follow up as soon as we can.

Type your message...

Chat ⚡ by Drift



Configure Device - [redacted]

General

Device ID
[redacted]

Created - Nov 15, 2018
Updated - Nov 15, 2018

Energy Parameter* [redacted]

Transformation* Multiply

Argument* 1


Aggregate

Parameters

[redacted] decimal [X]


[redacted] decimal [X]

[Update Device](#) [Close](#)



Device updated successfully

[OK](#)



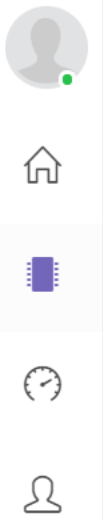
Support

Need help with something? Leave us a message and we'll follow up as soon as we can.

Type your message...

Chat ⚡ by Drift





Energy

0 Units

Energy generated today

Code is in description below. celc

And also set your wifi credential.

And upload that code in your wemos d1 or any microcontroller which having inbuilt esp8266 module.

Data Point

Nov 15, 2018, 11:12:20 AM

60 x

85 y

Last 5 data

Refresh

1	Slave ID - 1	Nov 15, 2018, 11:12:20 AM
2	Slave ID - 1	Nov 15, 2018, 11:16:19 AM
3	Slave ID - 1	Nov 15, 2018, 11:15:19 AM
4	Slave ID - 1	Nov 15, 2018, 11:14:19 AM

Device Graphs

No Graphs Created

Create Graph



LM35_ThighsIO

```
int pos = line.indexOf("\"timestamp\""); //search for "\"timestamp\"" from beginning of response got and copy all data after that , it'll be your timestamp
if (pos >= 0)
{
  int j = 0;
  for(j=0;j<10;j++)
  {
    timestamp[j] = line[pos + 12 + j];
  }
}
}

////////////////////////////////////

void setup()
{
  Serial.begin(115200); // (19200, SERIAL_8E1) - data size = 8 bits , parity = Even , stop bit = 1bit
  mySerial.begin(115200);
  WiFiManager wifiManager;

  wifiManager.setAPCallback(configModeCallback);

  if(!wifiManager.autoConnect(" ", " ")) //wifiManager.autoConnect("AP-NAME", "AP-PASSWORD"); (OR) wifiManager.autoConnect("AP-NAME"); only ID no password (OR) wifiManager
  {
    Serial.println("failed to connect and hit timeout"); //control comes here after long time of creating Access point "NodeMCU" by NodeMCU and still it has not connected
    //reset and try again, or maybe put it to deep sleep
    ESP.reset();
    delay(1000);
  }

  //if you come here you have connected to the WiFi
  Serial.println("connected... :");
}
```

You have to set your own WiFi SSID and Password.

Save Canceled.

```
Archiving built core (caching) in: C:\Users\khush\AppData\Local\Temp\arduino_cache_366731\core\core_esp8266_esp8266_d1_CpuFrequency_80,VTable_flash,FlashSize_4M1M,LwIPVariant_v2mss536,Debug_Disabled,DebugLevel_1
Linking everything together...
"C:\Users\khush\AppData\Local\Arduino15\packages\esp8266\tools\xtensa-lx106-elf-gcc\1.20.0-26-gb404fb9-2/bin/xtensa-lx106-elf-gcc" -CC -E -P -DVTABLES_IN_FLASH "C:\Users\khush\AppData\Local\Arduino15\packages\es
"C:\Users\khush\AppData\Local\Arduino15\packages\esp8266\tools\xtensa-lx106-elf-gcc\1.20.0-26-gb404fb9-2/bin/xtensa-lx106-elf-gcc" -Wl,-Map "C:\Users\khush\AppData\Local\Temp\arduino_build_255003/LM35_Thighs
"C:\Users\khush\AppData\Local\Arduino15\packages\esp8266\tools\esptool\0.4.13/esptool.exe" -eo "C:\Users\khush\AppData\Local\Arduino15\packages\esp8266\hardware\esp8266\2.4.2\bootloaders/eboot/eboot.elf" -bo "C
Using library SoftwareSerial at version 1.0 in folder: C:\Users\khush\AppData\Local\Arduino15\packages\esp8266\hardware\esp8266\2.4.2\libraries\SoftwareSerial
```



Send

```

timestamp received
*****
closing connection
inside ThingsCloudPost
{"device_id": 209225, "slave_id": 1,"dts":,"data":{"Centimeter":239,"CM":239}}
Response From Server
HTTP/1.1 400 Bad Request
Server: nginx/1.10.3 (Ubuntu)
Date: Fri, 16 Nov 2018 07:17:40 GMT
Content-Type: application/json; charset=utf-8
Content-Length: 174
Connection: keep-alive
X-Powered-By: Express
ETag: W/"ae-85zTO1hvI1BoiOPlCsSDJFdatL4"

{"expose":true,"statusCode":400,"status":400,"body":{"\device_id\": 209225, \slave_id\": 1,\dts\":,\data\":{"Centimeter\":239,\CM\":239}}","type":"entity.parse.failed"}
//////////////////// THE END //////////////////////
connecting to api.thingsio.ai
inside get timestamp

connecting to api.thingsio.ai
inside get timestamp

timestamp received
*****

closing connection
inside ThingsCloudPost
{"device_id": 209225, "slave_id": 1,"dts":,"data":{"Centimeter":238,"CM":238}}
Response From Server
HTTP/1.1 400 Bad Request
Server: nginx/1.10.3 (Ubuntu)
Date: Fri, 16 Nov 2018 07:18:47 GMT
Content-Type: application/json; charset=utf-8
Content-Length: 174
Connection: keep-alive
X-Powered-By: Express
ETag: W/"ae-Y2+F0VFG7P1XtaOYxELPEm+XCc4"

{"expose":true,"statusCode":400,"status":400,"body":{"\device_id\": 209225, \slave_id\": 1,\dts\":,\data\":{"Centimeter\":238,\CM\":238}}","type":"entity.parse.failed"}

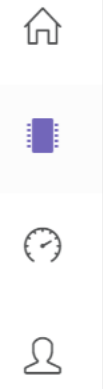
```

What you see in serial monitor



Device - Ultra Sonic
Device ID : 209225 | Project : Ultra Sonic

Quick Analysis ▾ Sample Codes Send Trial Data Create Graph Configure Device



Energy (Centimeter)

2,963

Units

Energy generated today



Data Point

Nov 16, 2018, 12:53:38 PM

239
CM

239
Centimeter

Last 5 data

Refresh

1	Slave ID - 1	Nov 16, 2018, 12:53:38 PM
2	Slave ID - 1	Nov 16, 2018, 12:53:38 PM
3	Slave ID - 1	Nov 16, 2018, 12:53:38 PM
4	Slave ID - 1	Nov 16, 2018, 12:53:38 PM
5	Slave ID - 1	Nov 16, 2018, 12:53:38 PM

Device Graphs

CENTIMETER Graph

If you want to see graph then click here...