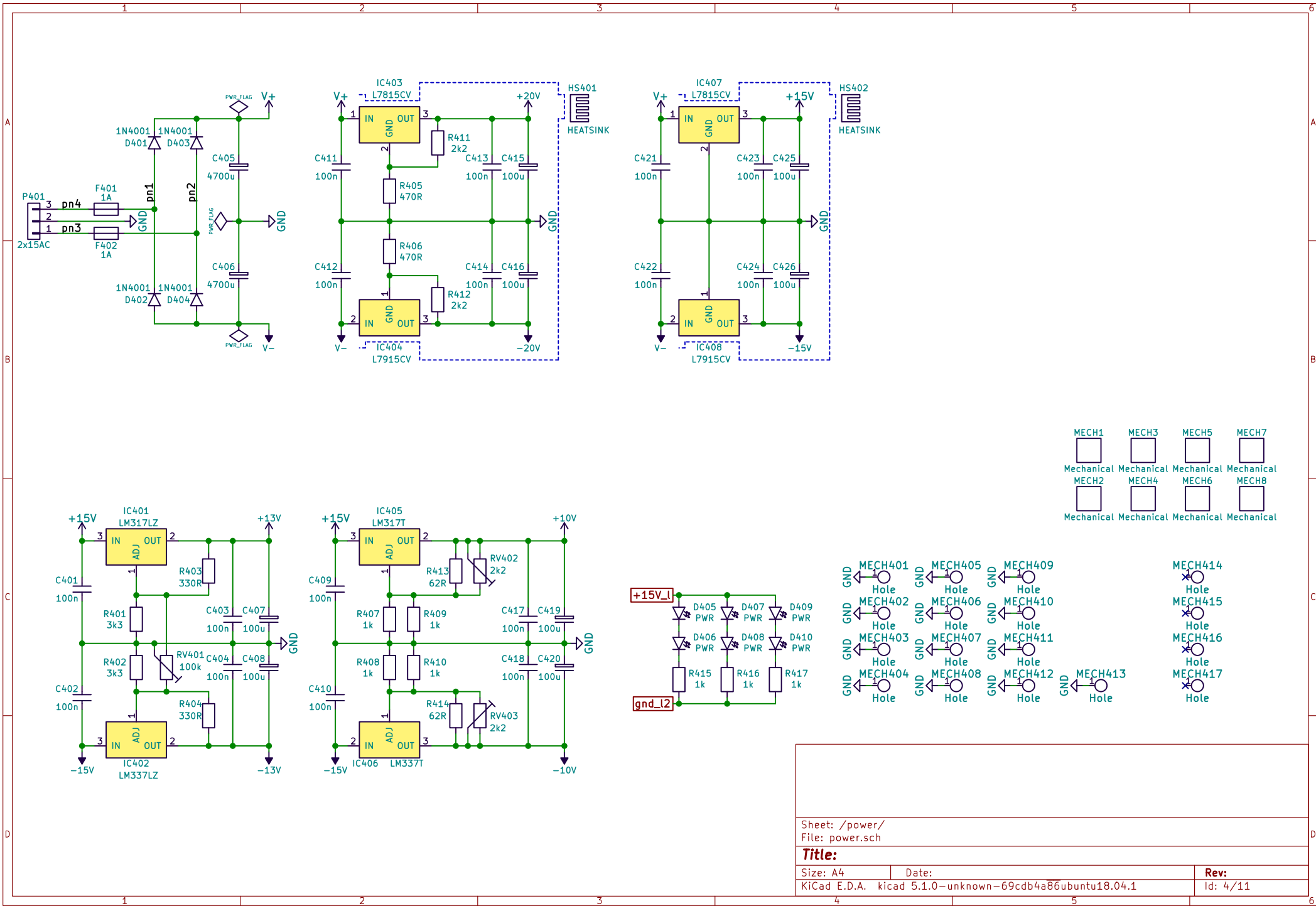
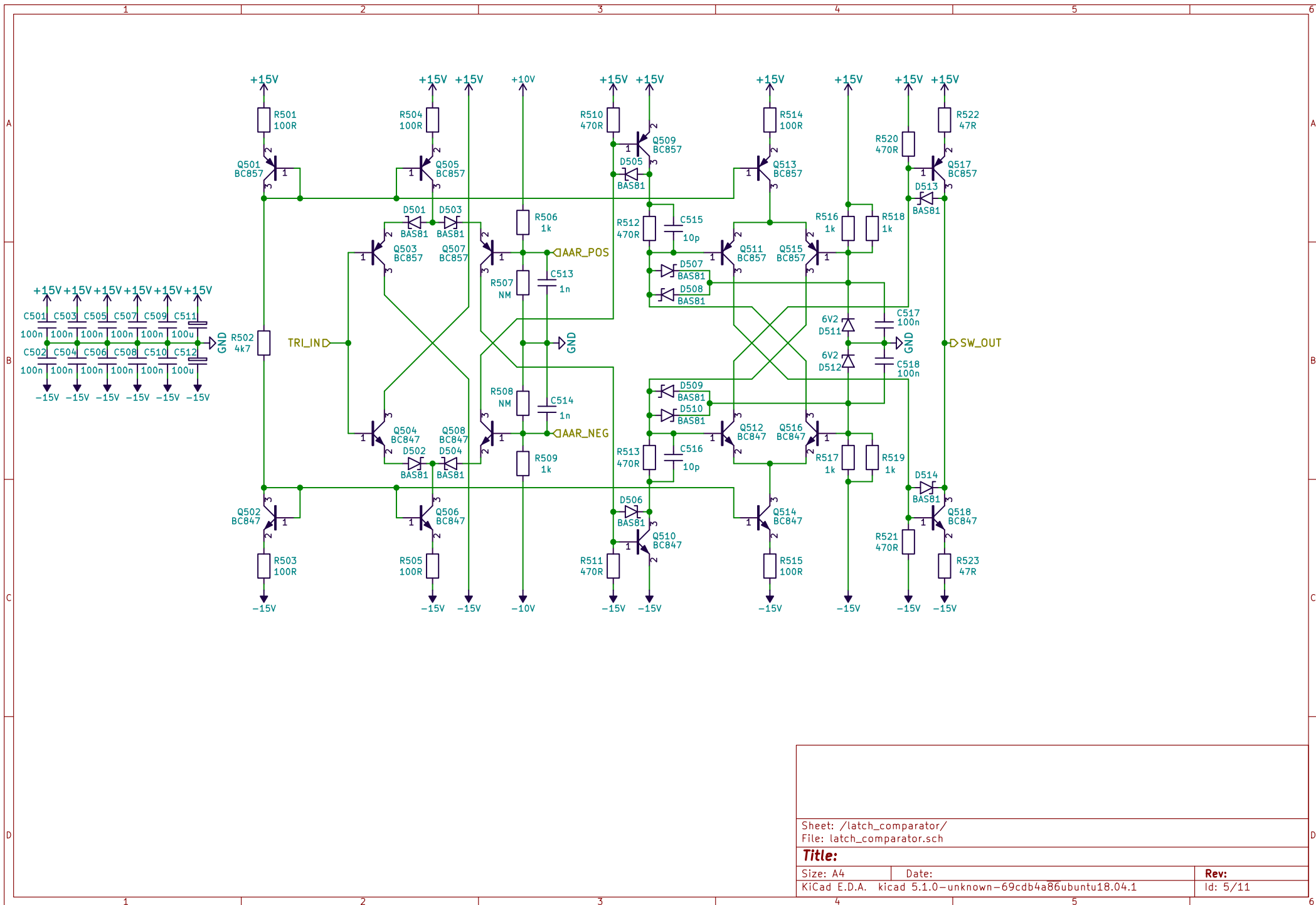
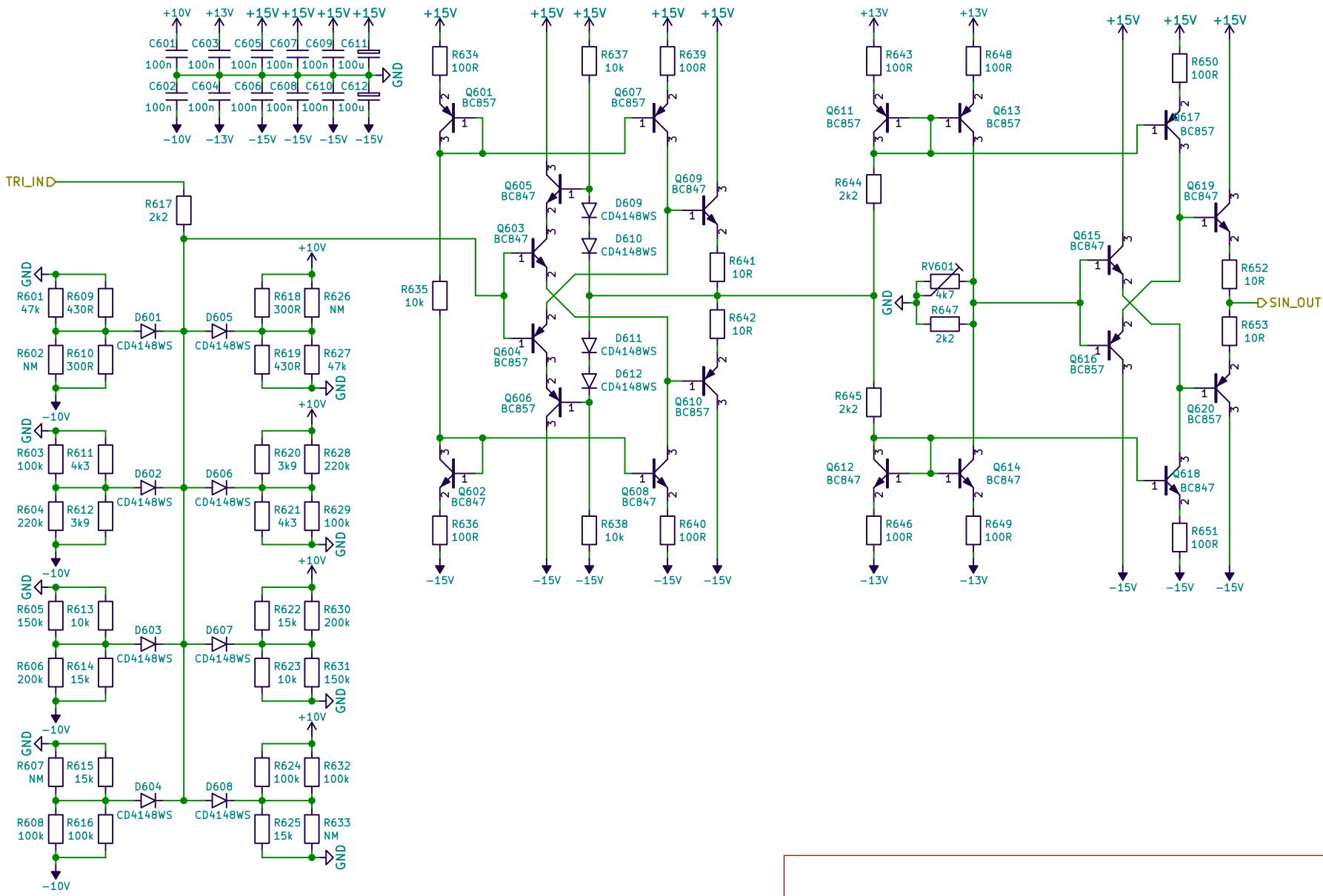


Sheet: /amplifier/ File: amplifier.sch		
<b>Title:</b>		
Size: A4	Date:	Rev:
KiCad E.D.A. kicad 5.1.0-unknown-69cdb4a86ubuntu18.04.1		Id: 3/11

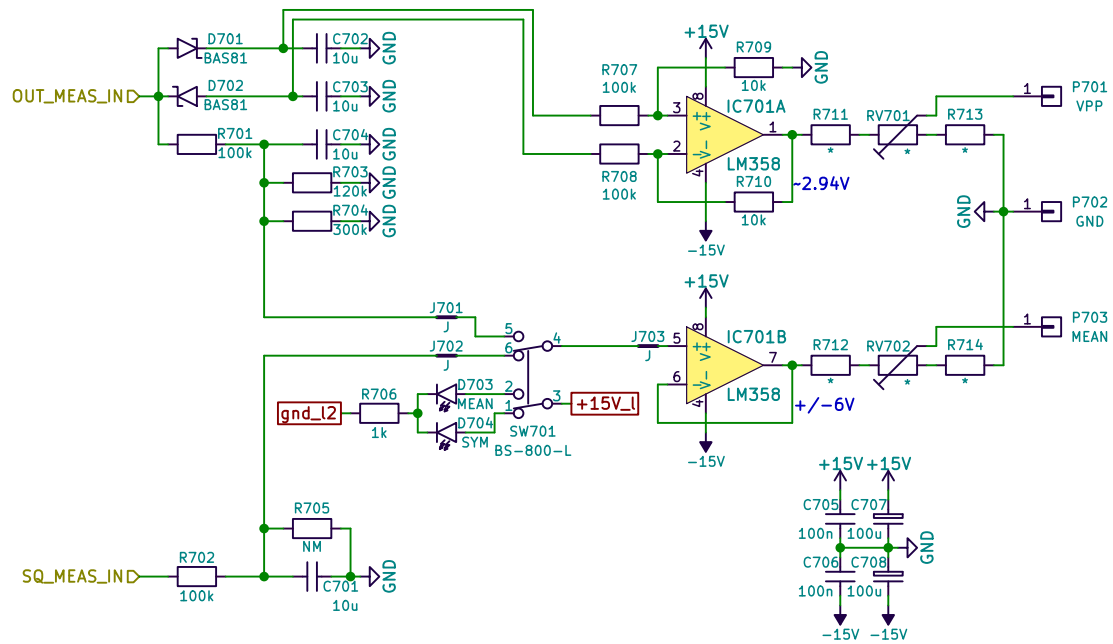


Sheet: /power/ File: power.sch		
<b>Title:</b>		
Size: A4	Date:	Rev:
KiCad E.D.A. kicad 5.1.0-unknown-69cdb4a86ubuntu18.04.1		Id: 4/11





Sheet: /sin_shaper_preamplifier/ File: sin_shaper_preamplifier.sch		
Title:		
Size: A4	Date:	Rev:
KiCad E.D.A. kicad 5.1.0-unknown-69cdb4a86ubuntu18.04.1	Id: 6/11	



mean of SQ\_MEAS\_IN is  $-10 \cdot 0.2 + 10 \cdot 0.8 = 6V$  (at  $D_{max} = 0.8$ )  
 mean of OUT\_MEAS\_IN is  $5 \cdot 0.2 + 15 \cdot 0.8 = 13V$  (at  $D_{max} = 0.8$ )

Sheet: /measure/  
 File: measure.sch

# **Title:**

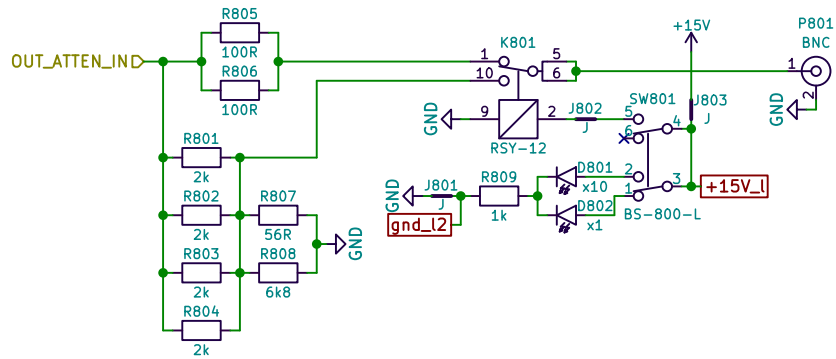
Size: A4

Date:

Rev:

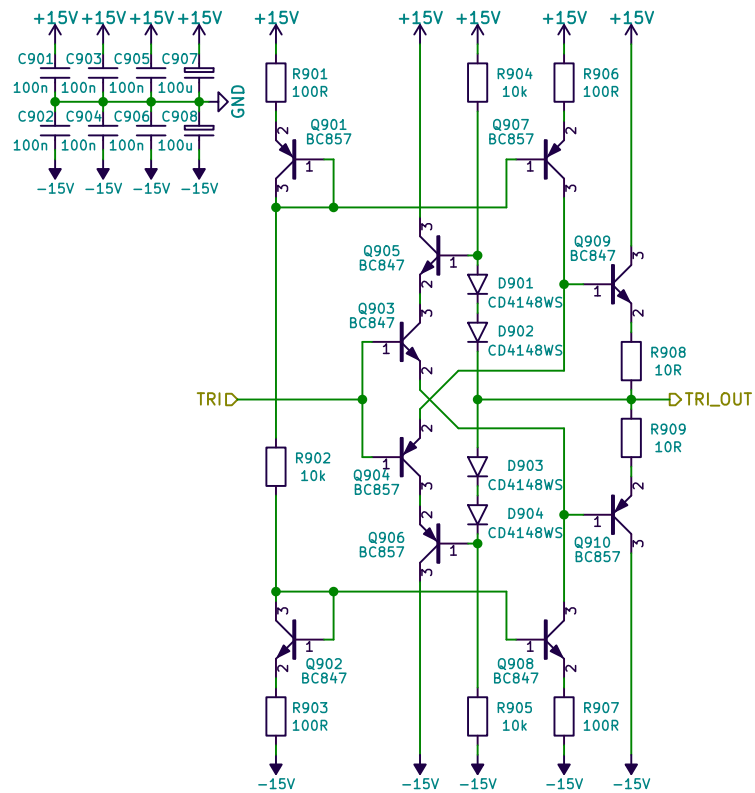
KiCad E.D.A. kicad 5.1.0-unknown-69cdb4a86ubuntu18.04.1

Id: 7/11



Sheet: /output_atten/ File: output_atten.sch		
<b>Title:</b>		
Size: A4	Date:	Rev:
KiCad E.D.A. kicad 5.1.0-unknown-69cdb4a86ubuntu18.04.1		Id: 8/11

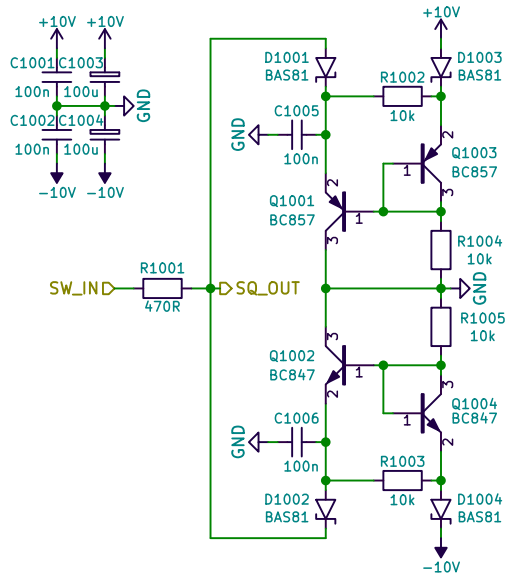




Sheet: /triangle\_preamplifier/  
File: triangle\_preamplifier.sch

**Title:**

Size: A4	Date:	Rev:
KiCad E.D.A. kicad 5.1.0-unknown-69cdb4a86ubuntu18.04.1		Id: 9/11



Sheet: /square\_limiter/  
File: square\_limiter.sch

**Title:**

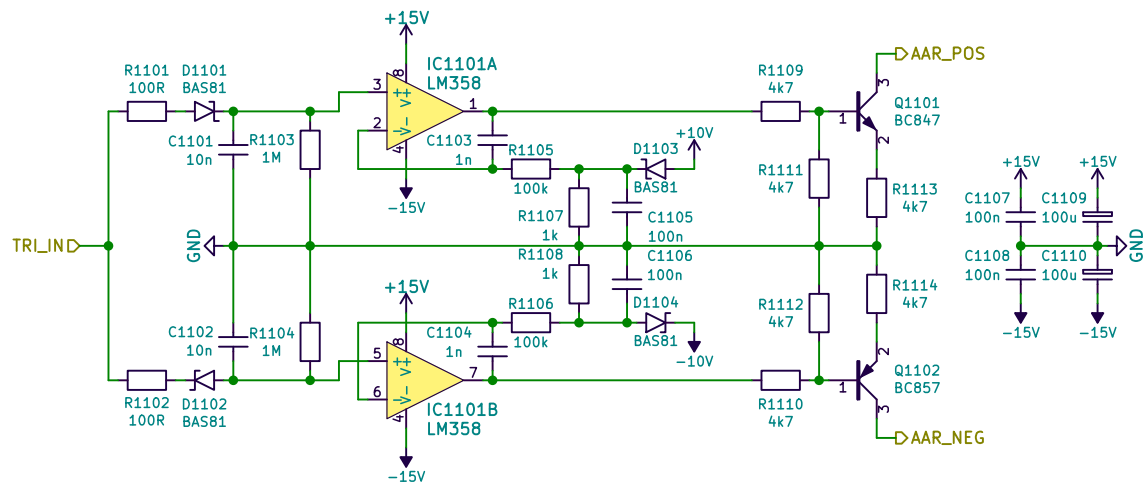
Size: A4

Date:

Rev:

KiCad E.D.A. kicad 5.1.0-unknown-69cdb4a86ubuntu18.04.1

Id: 10/11



Sheet: /automatic\_ampl\_regul/  
File: automatic\_ampl\_regul.sch

**Title:**

Size: A4 Date: Kicad E.D.A. kicad 5.1.0-unknown-69cdb4a86ubuntu18.04.1

Rev: Id: 11/11