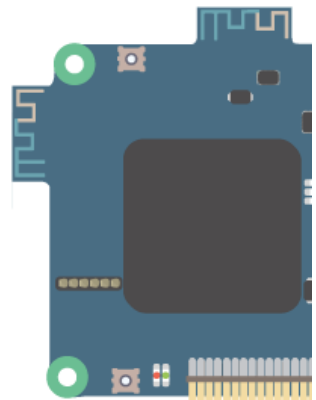
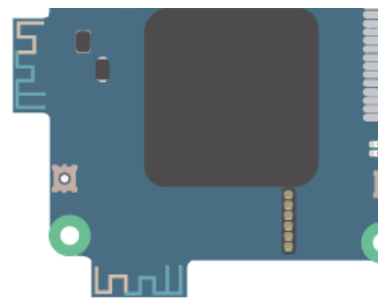


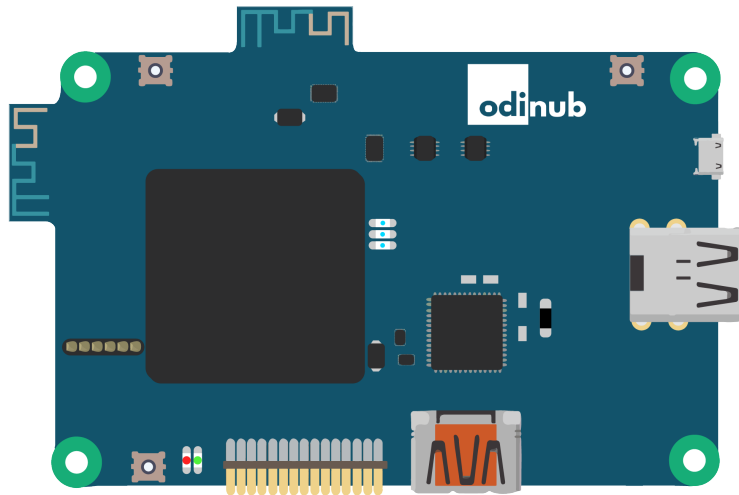


“

tinker your creativity
build your IoT apps
share on community.odinub.com



Overview:



Odinub is a low-cost, community-supported development platform for developers. Boot Linux in under 10 seconds.

32-bit processor running at 1GHz, Dual-band 2.4GHz wireless LAN, Bluetooth 4.2/BLE.

Allowing the board to be designed into end products with significantly reduced wireless LAN compliance testing, improving both cost and time to market. ODINUB is easy to use pocket sized IoT computer.

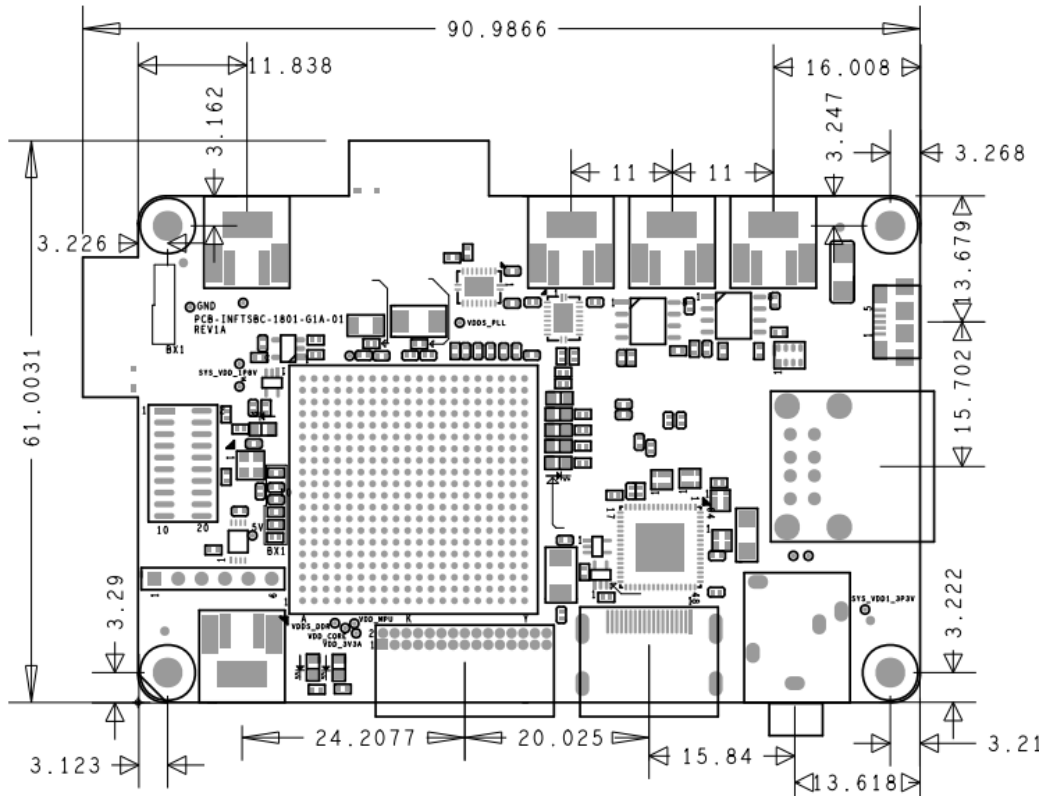
Specification:

Processor:	Octavo System OSD3358, Cortex A8 32-bit SiP @ 1GHz
Memory:	512 MB DDR3L Memory
Storage:	4 GB eMMC
Connectivity:	2.4GHz IEEE 802.11.b/g/n/ac wireless LAN, Bluetooth 4.2(BLE) 2 x USB 2.0 port 2xUART 1xSPI 1xI2C 1xCAN 12-bit SAR ADC
Access:	30-pin GPIO header (Including 4 Analog Input pins,) 5V, 3.3 V, 1.8V output pins
Video & sound:	1 × full size HDMI
Multimedia:	SGX 3D Graphics engine
SD card support:	Micro SD format for loading operating system and data storage
Input power:	5V/2.5A DC via micro USB connector
Environment:	Operating temperature, 0–50°C
Production lifetime:	Odinub will remain in production until at least January 2021 Q2

www.odinub.com

info@odinub.com

Physical Specs:



All Dimensions in mm

Warning:

- This product should only be connected to an external power supply rated at 5V/2.5 A DC.
- This product should be operated in a well-ventilated environment.
- This product should be placed on a stable, flat, non-conductive surface and should not be contacted by conductive items.
- The connection of incompatible devices to the GPIO connection may affect compliance, result in damage to the unit.
- All peripherals used with this product should comply with relevant standards for the country of use and be marked accordingly to ensure that safety and performance requirements are met. These articles include but are not limited to keyboards, monitors, and mice when used in conjunction with ODINUB.

www.odinub.com

info@odinub.com

- The cables and connectors of all peripherals used with this product must have adequate insulation so that relevant safety requirements are met.

Safety Instruction:

- Do not expose to water or moisture, or place on a conductive surface whilst in operation.
- Do not expose to heat from any source; ODINUB is designed for reliable operation at normal ambient temperatures.
- Take care whilst handling to avoid mechanical or electrical damage to the printed circuit board and connectors.
- Whilst it is powered, avoid handling the printed circuit board, or only handle it by the edges to minimise the risk of electrostatic discharge damage.

Software Support:

- Debian 8 with latest Kernel
- Android (Under Development)