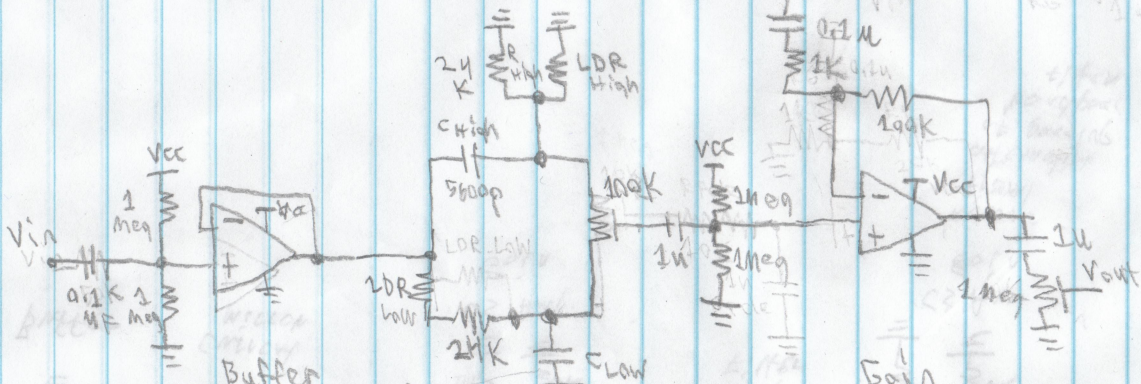


T37204 LDR Light Affected Tone Pedal O P AMP



Buffer
To deal w/
varying
output
resistances
of different
units

Bandpass
filter

LDR = 3K - 1K

Gain
stage
To recover
power loss of signal
from passive filter

$$\frac{V_{out}}{V_{in}} = (1 + \frac{R_F}{R_G}) \left(\frac{1}{1 + s R_{eq} C_{eq}} \right)$$

$\frac{1}{1 + s R_{eq} C_{eq}}$