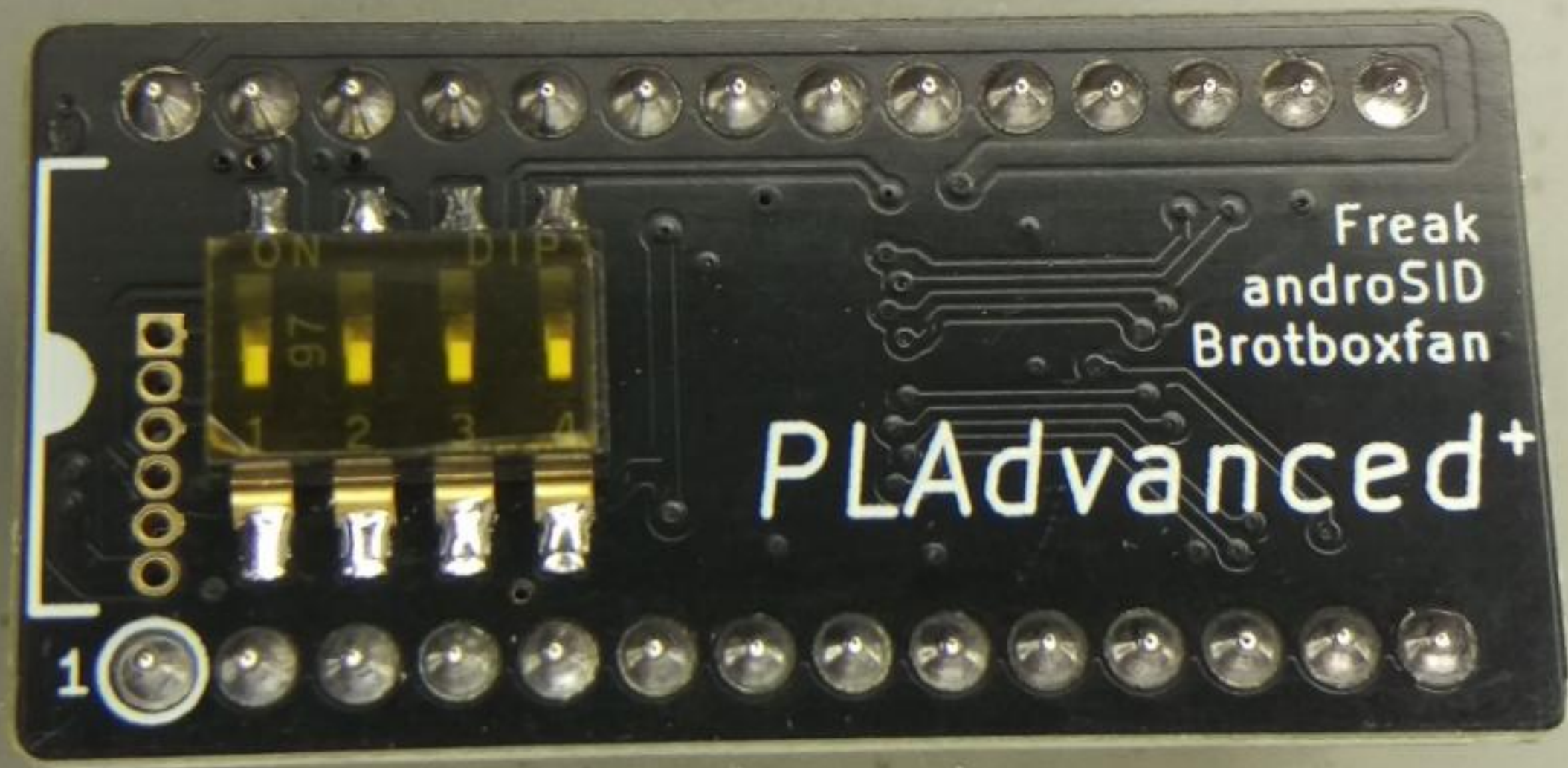


Config#	DIP 1234	C= Part#	Device	PLAdvanced+	PLAdvanced	PLAdvanced CBM	PLAdvanced 567
0	0000	906114-01	C64	default	default		
1	1000	251641-03	1551				
2	0100	906114-04	CBM 6x0			default	
3	1100	906114-05	CBM 7x0				
4	0010	251641-02	C16 / plus4				
5	1010	324745-01	CBM 8296 UE5				
6	0110	324744-01	CBM 8296 UE6				
7	1110	906114-02	P500 U78				default
8	0001	906114-03	P500 U88				

20-Mar-2018

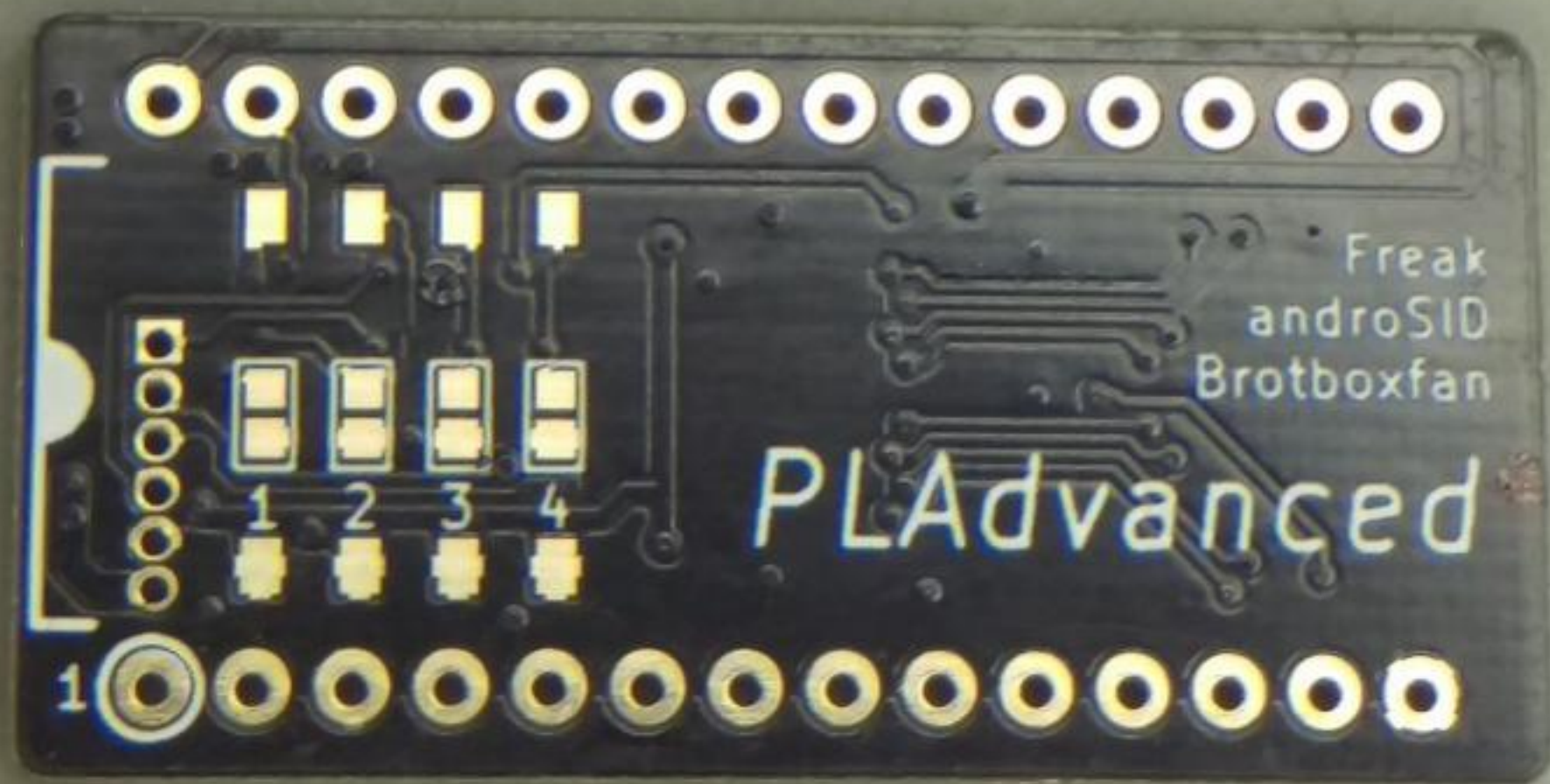
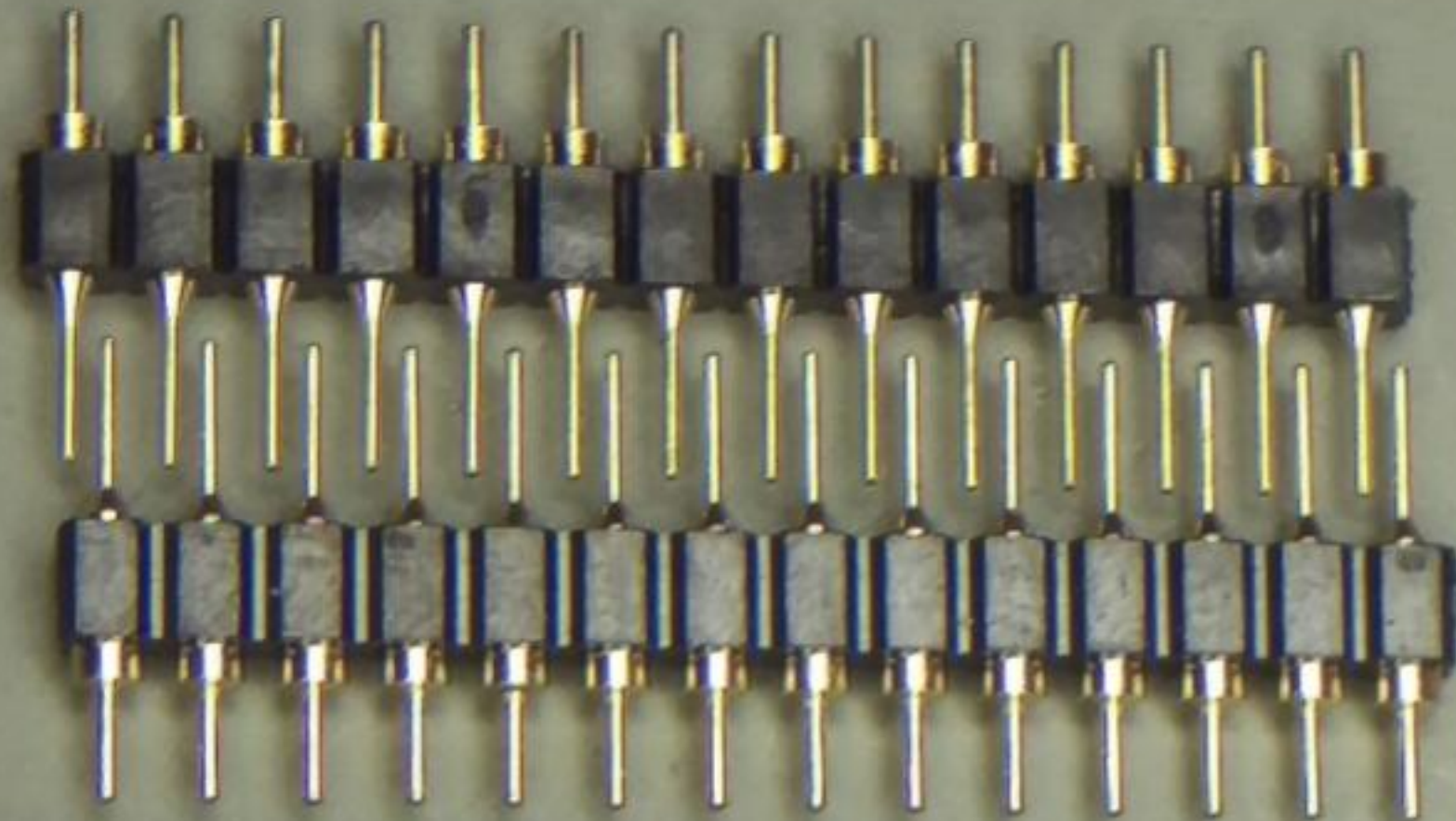


Freak  
androSID  
Brotboxfan

PLAdvanced+

1







DC → AC



DE58335918



CIA#2

icomp.de  
tNge

ROMs

- \$0000-\$0fff: 1st Character
- \$1000-\$1fff: 2nd Character
- \$2000-\$3fff: Basic
- \$4000-\$5fff: 1st Kernal
- \$6000-\$7fff: 2nd Kernal

VSP fix



64k RAM



mux/demux...



CPU



PLAdvanced  
Frank  
astasio  
Brettonen

PLA

colour RAM



VC-II voltage  
J2 left: 6569/6567 (12V)  
J2 right: 8565/8562 (5V)

VC-II

8701



filter caps: close J4+J5  
for 8580 and 6582



SID

5V supply: 4A max.

J6: SD voltage  
close=12V for 6581, open=9V for 8580/6582

WARRANTY  
9Ta/6

www.icomp.de

(C)2014, 2015 J. Schoenfeld C O M P U T E R S

#08  
C64 reloaded by  
INDIVIDUAL



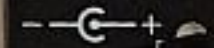
Powered by  
C64  
reloader

C64 ROMs  
License key:  
33223-84164-54712-03165  
Registration and legal: cloare.com/genuine

QUALITY CONTROL  
PASSED  
MADE IN GERMANY



12V DC in



keyboard

LED

CIA#1

50/60Hz gen,  
reset/restore gen





~~\*\*\*\*~~ commodore 64 basic v2 ~~\*\*\*\*~~

64k ram system 38911 basic bytes free

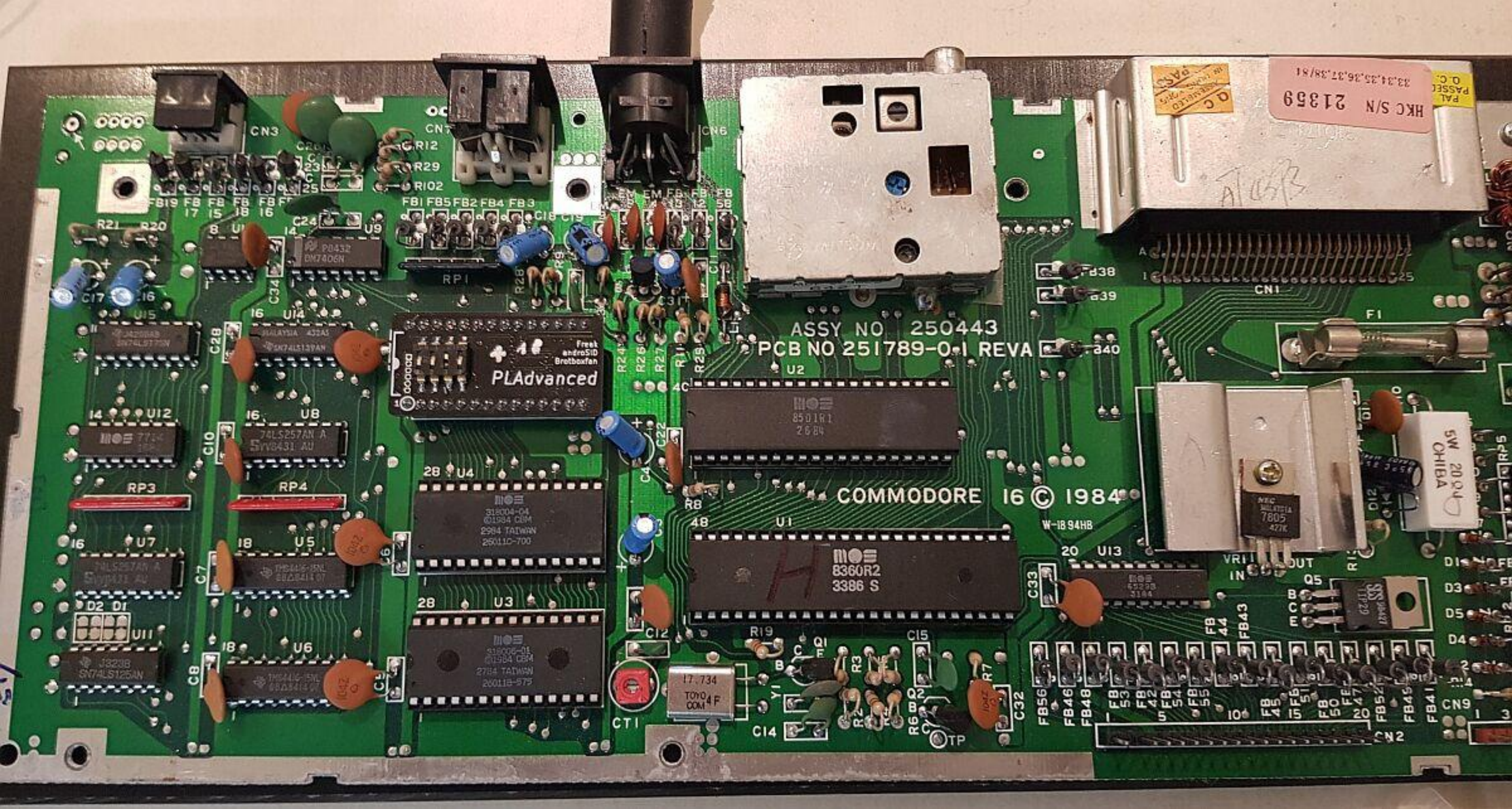
ready.

poke53280,3:poke53281,1

ready.

PLAdvanced+ 20.03.2018■





ASSY NO 250443  
PCB NO 251789-0.1 REVA

COMMODORE 16 © 1984

PLAdvanced  
Freck androSID  
Brotboxfan

8501R1  
2684

8360R2  
3386 S

318004-04  
011984 CDM  
2584 TAIWAN  
260110-700

318006-01  
011984 CDM  
2784 TAIWAN  
260118-575

PAL PASSEI  
D.C.  
HKC S/N 21359  
33.34.35.36.37.38/81

SW 2004  
OHIBA

NEC  
MELD11A  
7805  
477K

17.734  
TOYO  
COM 4F





C2231  
45B4

Freak  
androSID  
Brotboxfan

PLAdvanced

ASSEMBLED  
IN HONG KONG  
PASS  
Q.C.

HKC S/N 24519  
33,34,35,36,37,38/84

PAL  
PASSED  
Q.C.

AT4393

FB38

FB39

FB40

CN1

F1



SEARCHING FOR \$  
LOADING  
READY.  
LIST

0	HELLO	TEST/DEMO	" ZX 2A
13		"HOW TO USE"	PRG
5		"HOW PART TWO"	PRG
4		"VIC-20 WEDGE"	PRG
1		"C-64 WEDGE"	PRG
4		"DOS 5.1"	PRG
1		"COPY/ALL"	PRG
9		"PRINTER TEST"	PRG
4		"DISK ADDR CHANGE"	PRG
4		"DIR"	PRG
6		"VIEW BAM"	PRG
4		"CHECK DISK"	PRG
1		"DISPLAY T&S"	PRG
4		"PERFORMANCE TEST"	PRG
5		"SEQUENTIAL FILE"	PRG
13		"RANDOM FILE"	PRG
558	BLOCKS FREE.		

READY.  
█



\*\*\* commodore basic 4.0 \*\*\*

31743 bytes free

ready.

PLAdvanced+

15.03.2018

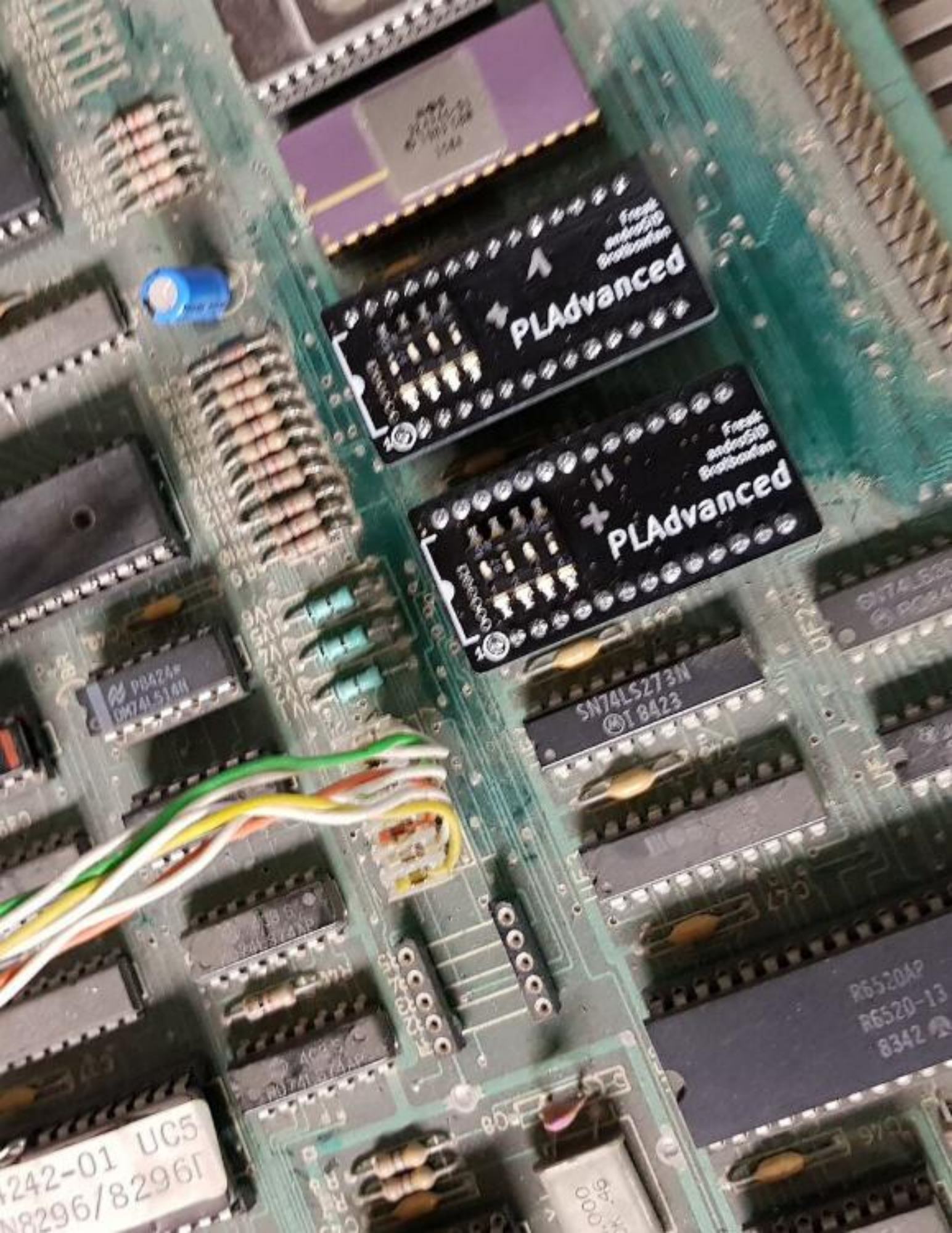
8296 UE5+UE6

?syntax error

ready.

█





Frank andrösID Brötchen  
**PLAdvanced**

Frank andrösID Brötchen  
**PLAdvanced**

PR42A  
DM74LS14N

SN74LS273N  
T 8423

SN74LS273N  
T 8423

R6520AP  
R6520-13  
8342

UC5  
8296/8296F

00049





Freak  
androSID  
Brotboxfan  
**PLAdvanced**  
06060ed

MALAYSIA 2408  
MC1488  
75188N

8249  
A1559AS

1.843200  
M-TRON  
83-3-S

P8306  
DM7405N

EL SALVADOR  
TIP  
LE PANDA

MALAYSIA 2408  
MC1488  
75188N



\*\*\* commodore basic 128, v4.0 \*\*\*

ready.


PLAdvanced+ 19.03.2018 CBM610 U18

1084S



commodore basic 2.0, v1.0 rev

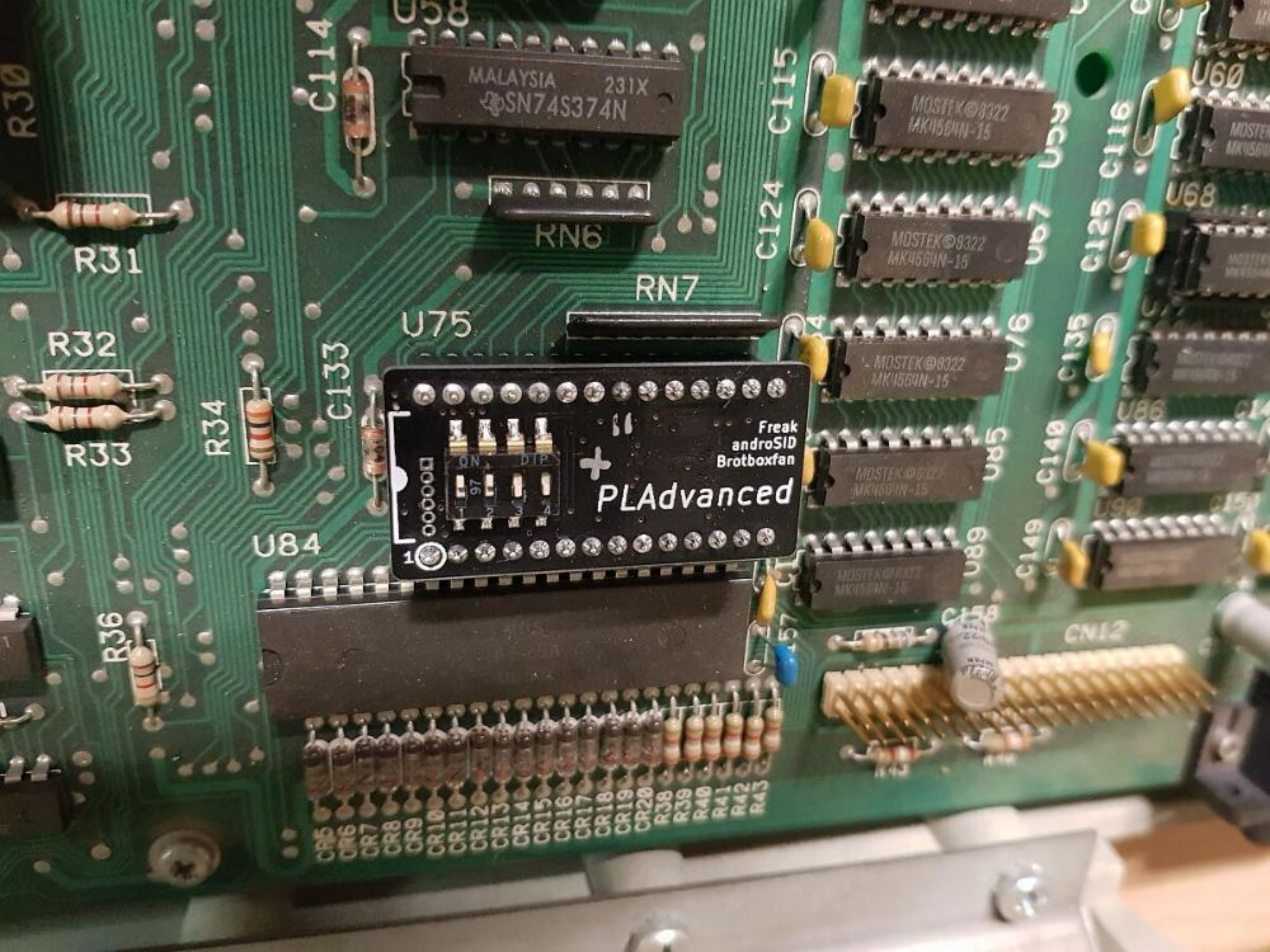
ready  
15:00:00 (000)

 **commodore**

720







MALAYSIA 231X  
SN74S374N

MOSTEK ©8322  
MK4564N-15

MOSTEK ©8322  
MK4564N-15

MOSTEK ©8322  
MK4564N-15

MOSTEK ©8322  
MK4564N-15

MOSTEK ©8322  
MK4564N-15

Freak  
androSID  
Brotboxfan  
**PLAdvanced**

ON  
DTP  
97  
3  
4

U84

U75

RN6

RN7

R31

R32

R33

R34

R36

C133

C114

C124 C115

C125 C116

C135

C148

C149

C158

CN12

CR5  
CR6  
CR7  
CR8  
CR9  
CR10  
CR11  
CR12  
CR13  
CR14  
CR15  
CR16  
CR17  
CR18  
CR19  
CR20  
R38  
R39  
R40  
R41  
R42  
R43



\*\*\* commodore basic 256, v4.0 \*\*\*

ready.

PLAdvanced+

15.03.2018

CBM7x0





100/901236-02  
100/901236-02  
100/901236-02  
100/901236-02

AB9126-  
1850  
238W/MC

Pladvanced  
Free!  
android  
SD  
Recorder

Pladvanced  
Free!  
android  
SD  
Recorder

AMP 1-530218-2  
0250

C157

C158

C159

U74

U75

U76

U77

U78

U79

U80

U81

U82

U83

U84

U85

U86

U87

U88

C170

C171

C172

C173

C174

C175

C176

C177

C178

C179

C180

C181

C182

C183

C184

C185

C186

C187

R96

R97

R98

R99

R100

R101

R102

R103

R104

R105

R106

R107

R108

R109

R110

R111

R112

R113

U91

U92

U93

U94

U95

U96

U97

U98

U99

U100

U101

U102

U103

U104

U105

U106

U107

U108



\*\*\* commodore basic 128, v4.0 \*\*\*

ready.

PLAdvanced+ 19.03.2018 P500 U78+U88

1084S