

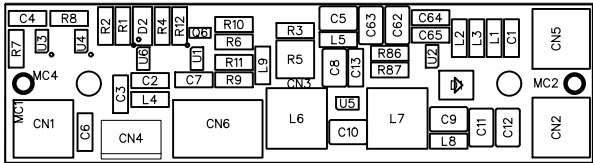
Either use CN1 or CN3 to connect your battery.  
Never connect two different batteries.

MC2  
MC\_FIDUCIAL

MC4  
MC\_FIDUCIAL



|                                  |                    |            |
|----------------------------------|--------------------|------------|
| TITLE: Li Ion charger + 3V3 buck |                    | REV: 2     |
| Company: Your Company            |                    | Sheet: 1/1 |
| Date: 2020-01-06                 | Drawn By: LieBtrau |            |



BOM\_li-ion charger + 3V3 buck\_2020-08-20\_11-24-38

| ID | Name              | Designator                   | Footprint                               | Quantity | Manufacturer Part     | Manufacturer                    | Supplier | Supplier Part            | Digi-Key         |
|----|-------------------|------------------------------|---|----------|-----------------------|---------------------------------|----------|--------------------------|------------------|
| 1  | 10U/16V           | C62,C63,C5,C8,C9,C10,C11,C12 | CA_1210                                 | 8        |                       |                                 | Digi-Key | 1276-1150-1-ND           |                  |
| 2  | LQM31PN4R7M00     | L2,L3                        | CL_1206                                 | 2        | LQM31PN4R7M00L        | Murata Electronics              | Digi-Key | 490-6706-1-ND            |                  |
| 3  | 10118192-0002LF   | CN4                          | CN_USB_MICRO_B_AMPHENOL_10118192-0002LF | 1        | Amphenol ICC (FCI)    | 10118192-0002LF                 | Digi-Key | 609-5379-1-ND            |                  |
| 4  | 41K               | R2,R4                        | RE_1206                                 | 2        | RTT061001FTP          | RALEC                           | LCSC     | C104594                  | 311-1.00KFRCT-ND |
| 5  | AP3429A           | U2                           | SC_SOT23-5                              | 1        | AP3429AKTTR-G1        | Diodes Incorporated             | LCSC     | C441814                  |                  |
| 6  | LC-1206QRC        | D2                           | DI_LED_1206                             | 1        |                       |                                 | LCSC     | C49018                   |                  |
| 7  | MBRS240LT3G       | D1                           | DI_DO214AA_SMB                          | 1        | MBRS240LT3G           | ON                              | LCSC     | C8165                    |                  |
| 8  | 8100n             | C2,C4                        | CA_1206                                 | 2        |                       |                                 | LCSC     | C1945                    | 1276-1017-1-ND   |
| 9  | 9330E             | R7                           | RE_1206                                 | 1        |                       |                                 | Digi-Key | RMCF1206FT330RCT-ND      |                  |
| 10 | BH-18650-PC       | CN3                          | CN_BAT_CLIP_MPD_BH-18650-PC             | 1        | BH-18650-PC           | MPD (Memory Protection Devices) | Digi-Key | BH-18650-PC-ND           |                  |
| 11 | 100K              | R12                          | RE_1206                                 | 1        | RC1206FR-07100KL      | Yageo                           | Digi-Key | 311-100KFRCT-ND          |                  |
| 12 | 680K              | R86                          | RE_1206                                 | 1        |                       |                                 | Digi-Key | RC1206FR-07680KL         |                  |
| 13 | 150K              | R87,R10,R11                  | RE_1206                                 | 3        |                       |                                 | LCSC     | C325905                  |                  |
| 14 | S2B-PH            | CN1,CN5,CN2                  | CN_HDR_1X2_90D_P20_JST_S2B-PH-SM4-TB    | 3        |                       |                                 | Digi-Key | 455-1749-1-ND            |                  |
| 15 | 2512061217Y5      | L4,L5,L1,L8,L9               | CL_1206                                 | 5        | 2512061217Y5          | Fair-Rite Products Corp.        | Digi-Key | 1934-1427-1-ND           |                  |
| 16 | 47U               | L6,L7                        | CL_STD8080                              | 2        | CDRH8D43NP-470NC      | Sumida America Components Inc.  | Digi-Key | 308-2149-1-ND            |                  |
| 17 | S4B-PH-SM4        | CN6                          | CN_HDR_1X2_90D_P20_JST_S4B_PH           | 1        | S4B-PH-SM4-TB(LF)(SN) | JST Sales America Inc.          | Digi-Key | 455-1751-1-ND            |                  |
| 18 | AO3401A           | Q6                           | SC_SOT23-3                              | 1        | AO3401A               | Alpha & Omega Semicon           | LCSC     | C15127                   |                  |
| 19 | LM2731X           | U5                           | SC_SOT23-5                              | 1        | LM2731XMXF/NOPB       | Texas Instruments               | Digi-Key | 296-35165-1-ND           |                  |
| 20 | 10n               | C3                           | CA_1206                                 | 1        | 1206B103K500NT        | FH                              | LCSC     | C1846                    | 1276-1035-1-ND   |
| 21 | 10K               | R1,R3,R6,R9                  | RE_1206                                 | 4        |                       |                                 | LCSC     | C104595                  | 311-10.0KFRCT-ND |
| 22 | 2K7               | R8                           | RE_1206                                 | 1        |                       |                                 | Digi-Key | 311-2.70KFRCT-ND         |                  |
| 23 | 1n0               | C6,C7,C13                    | CA_1206                                 | 3        |                       |                                 | Digi-Key | 1276-1050-1-ND           |                  |
| 24 | T100K             | R5                           | R_TRIM_5X5_SMD                          | 1        | ST4ETA104             | Nidec Copal Electronics         | Digi-Key | ST4ETA104CT-ND           |                  |
| 25 | TPS22917DBVR      | U1                           | SC_SOT23-6                              | 1        | TPS22917DBVR          | Texas Instruments               | Digi-Key | 296-50498-1-ND           |                  |
| 26 | DMG9926UDM-7      | U4                           | SC_SOT23-6                              | 1        | DMG9926UDM-7          | Diodes Incorporated             | Digi-Key | DMG9926UDMDICT-ND        |                  |
| 27 | BQ21040DBV        | U6                           | SC_SOT23-6                              | 1        | BQ21040DBVR           | Texas Instruments               | Digi-Key | 296-47315-1-ND           |                  |
| 28 | 10U/6V3           | C64,C65,C1                   | CA_1206                                 | 3        |                       |                                 | LCSC     | C318761                  | 399-3029-1-ND    |
| 29 | AP9101CAK6-BVTRG1 | U3                           | SC_SOT23-6                              | 1        | AP9101CAK6-BVTRG1     | Diodes Incorporated             | Digi-Key | AP9101CAK6-BVTRG1DICT-ND |                  |