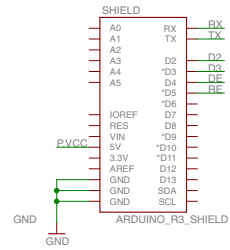
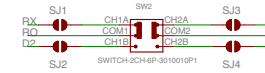


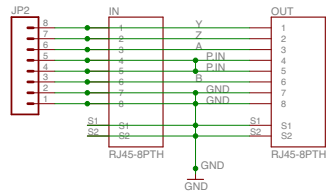
Breakout header



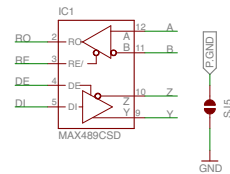
Arduino Shield connections



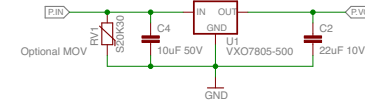
Hardware/software serial switch



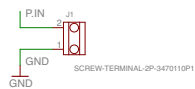
RJ45 connectors



RS485 Transceiver



Switching 5V 500mA power supply



Power input 7-36V



Optional terminator resistors

gve-lampje-logo

### Studio Gregor van Egdom Creative technical problem solver

Client: Nine Ideas

Project: Arduino RS485 shield - bus powered

Part: Main circuit board

Version: v3

Date: 11-6-2020