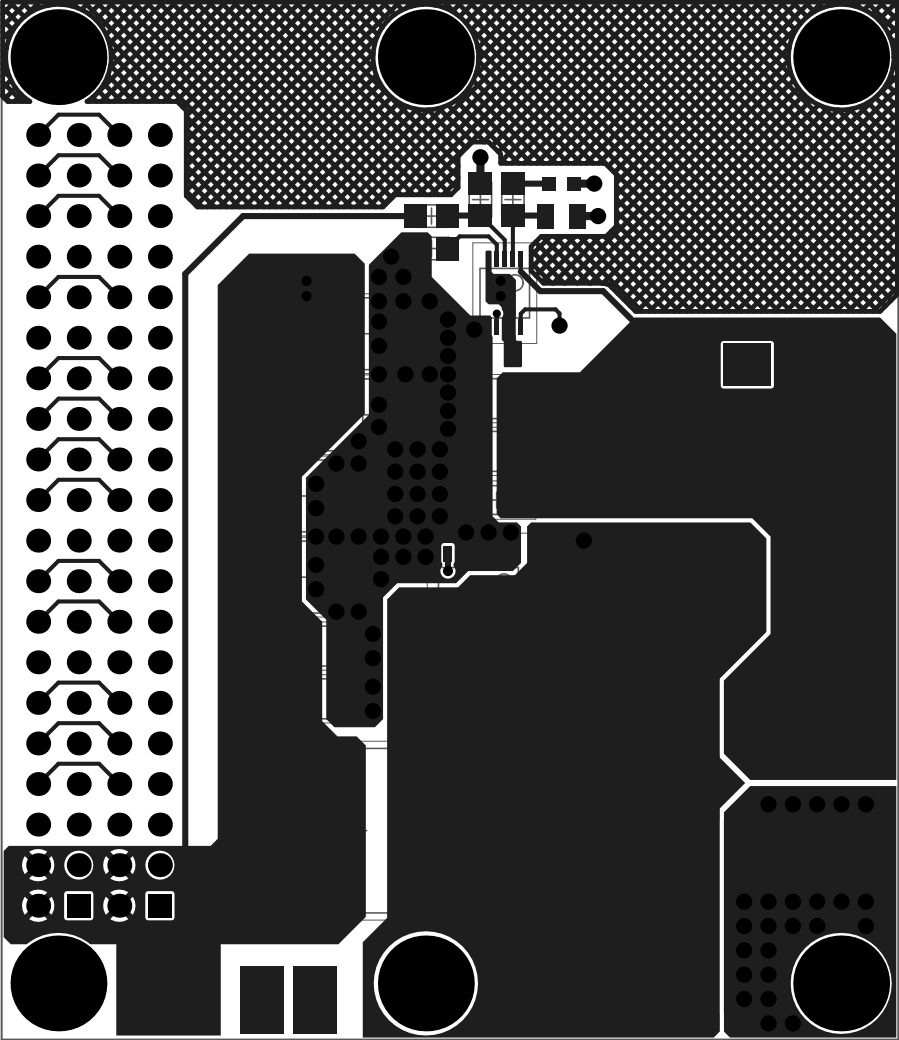


56.134 (mm)

65.024 (mm)

Plate all holes (including vias) which have a hole size below 100mil.
Do not plate holes which are above 200mil.

The battery connection pads extends to the board edge but the edge should not be plated

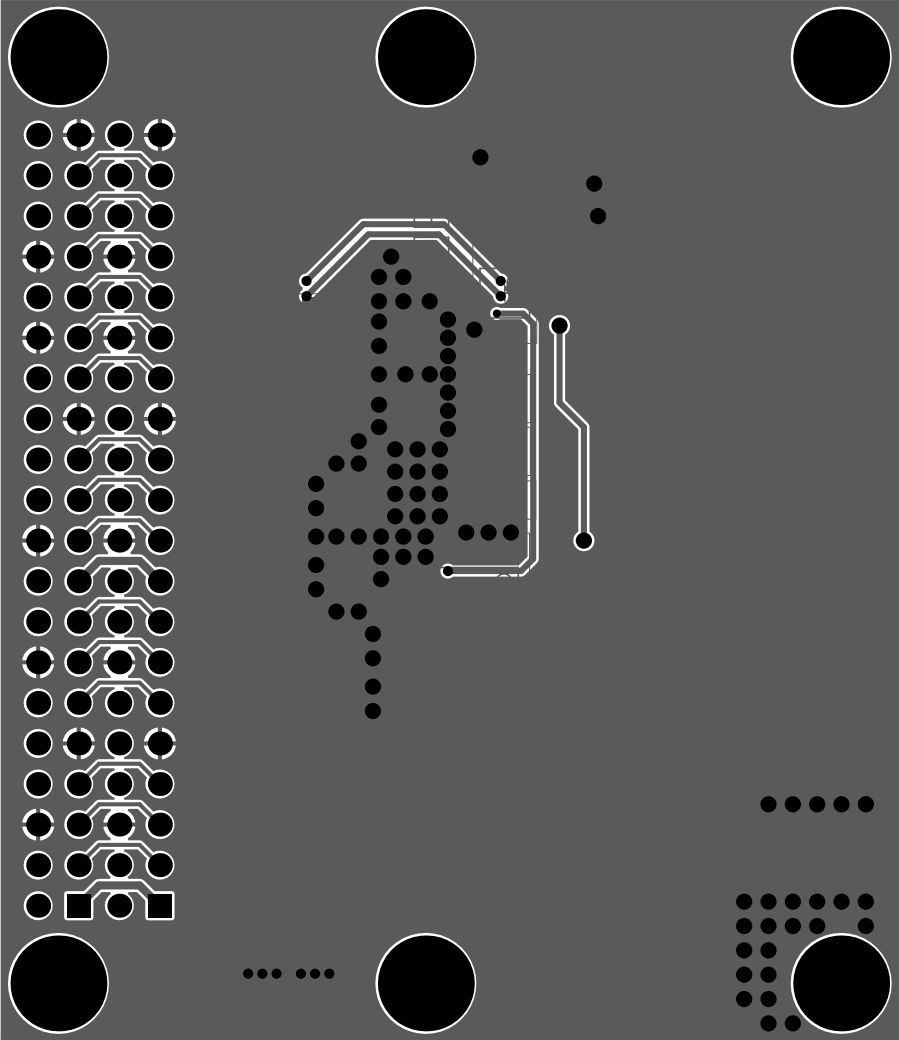


56.134 (mm)

65.024 (mm)

Plate all holes (including vias) which have a hole size below 100mil.
Do not plate holes which are above 200mil.

The battery connection pads extends to the board edge but the edge should not be plated



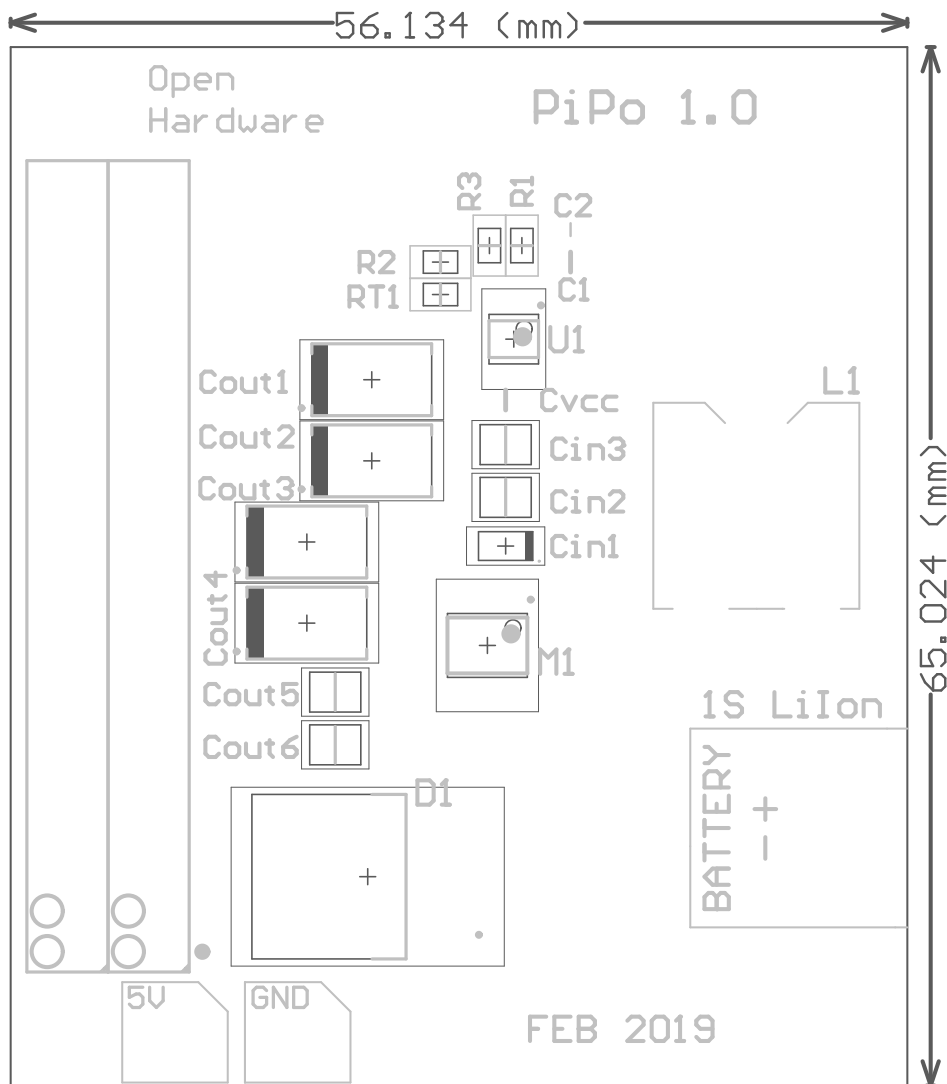


Plate all holes (including vias) which have a hole size below 100mil.
Do not plate holes which are above 200mil.

The battery connection pads extends to the board edge but the edge should not be plated

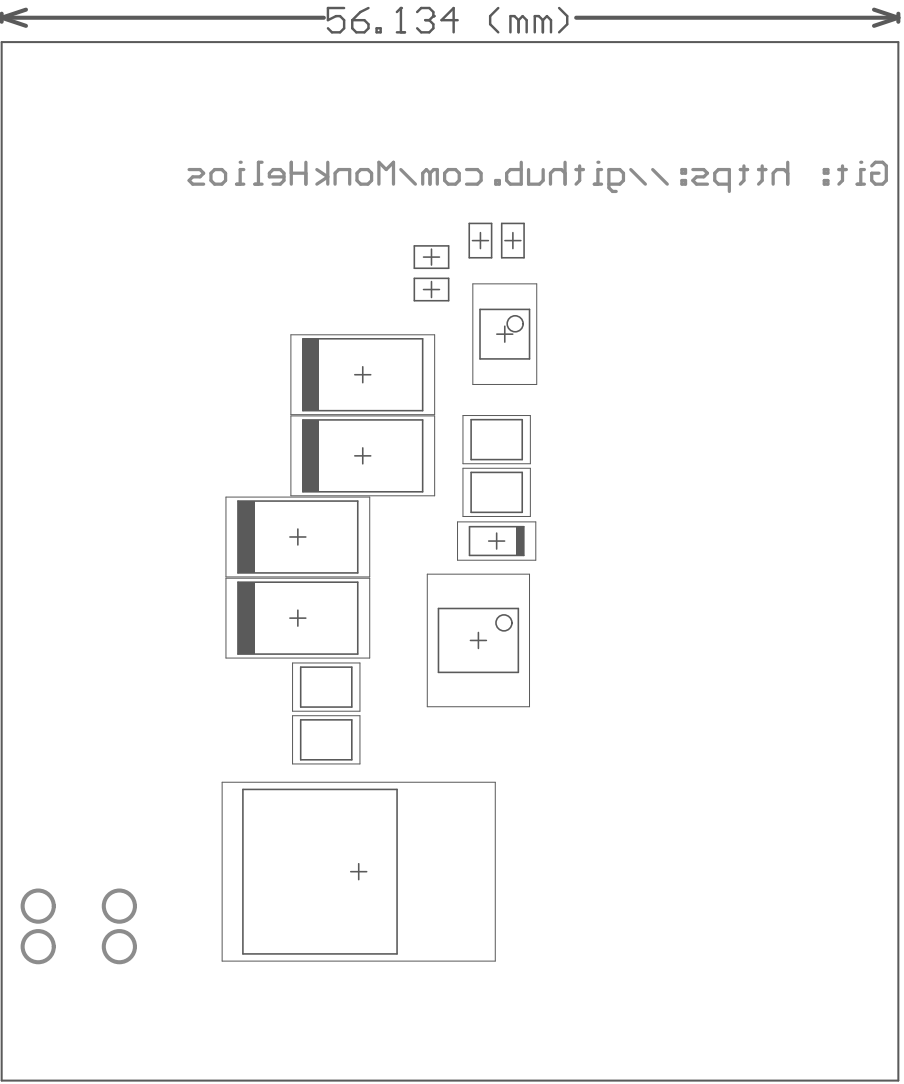


Plate all holes (including vias) which have a hole size below 100mil.
 Do not plate holes which are above 200mil.

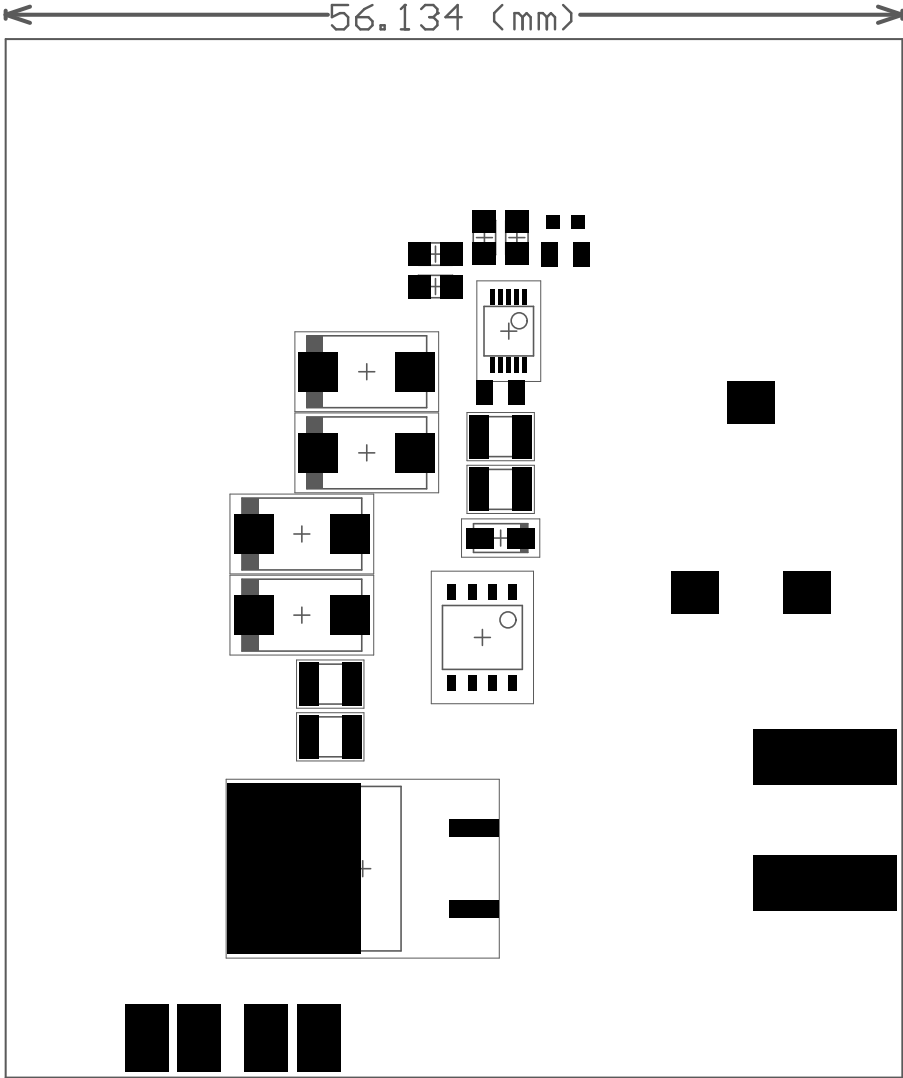
The battery connection pads extends to the board edge but the edge should not be plated

56.134 (mm)

65.024 (mm)

Plate all holes (including vias) which have a hole size below 100mil.
Do not plate holes which are above 200mil.

The battery connection pads extends to the board edge but the edge should not be plated

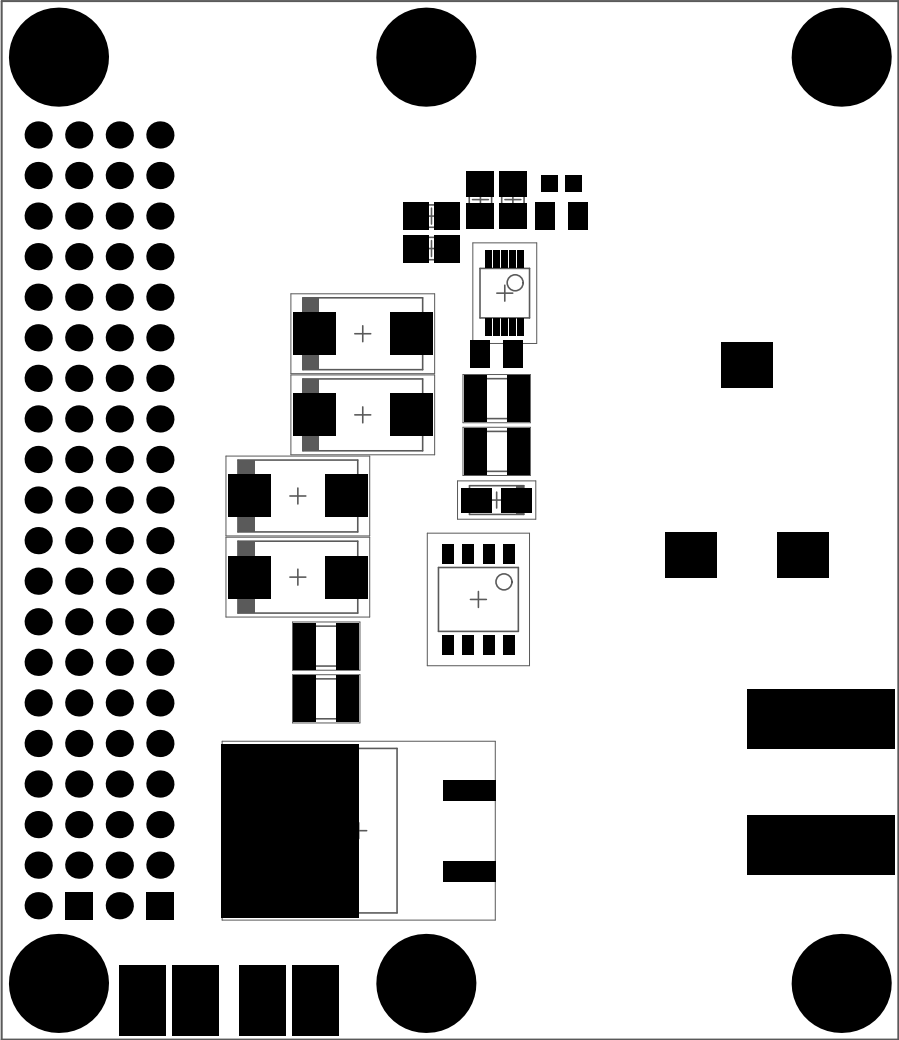


56.134 (mm)

65.024 (mm)

Plate all holes (including vias) which have a hole size below 100mil.
Do not plate holes which are above 200mil.

The battery connection pads extends to the board edge but the edge should not be plated

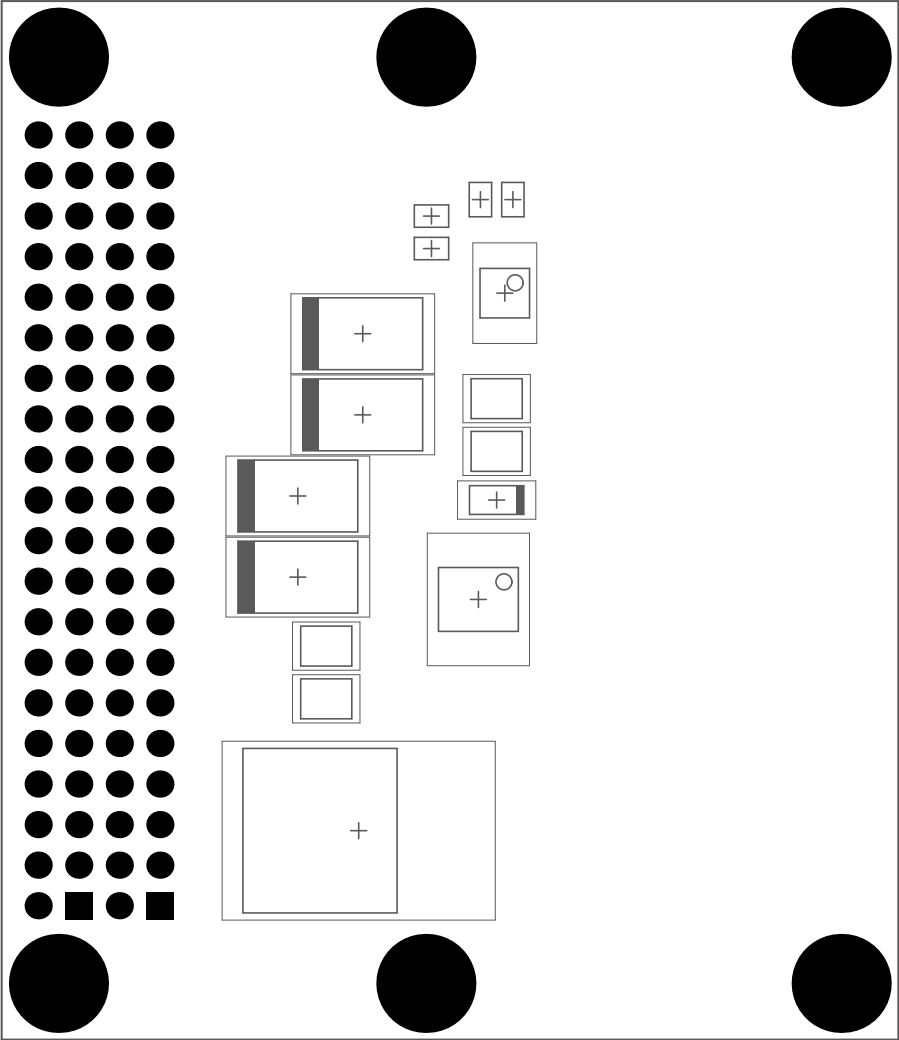


56.134 (mm)

65.024 (mm)

Plate all holes (including vias) which have a hole size below 100mil.
Do not plate holes which are above 200mil.

The battery connection pads extends to the board edge but the edge should not be plated

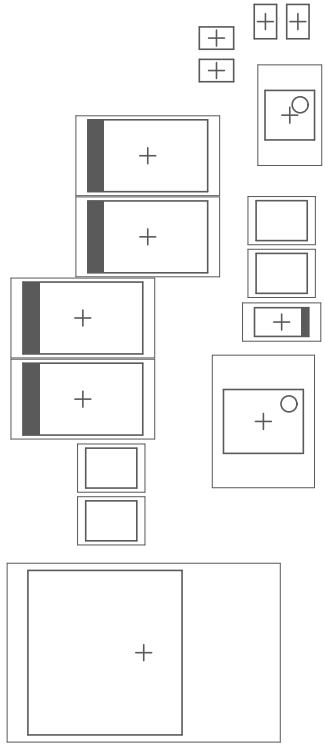


56.134 (mm)

65.024 (mm)

Plate all holes (including vias) which have a hole size below 100mil.
Do not plate holes which are above 200mil.

The battery connection pads extends to the board edge but the edge should not be plated

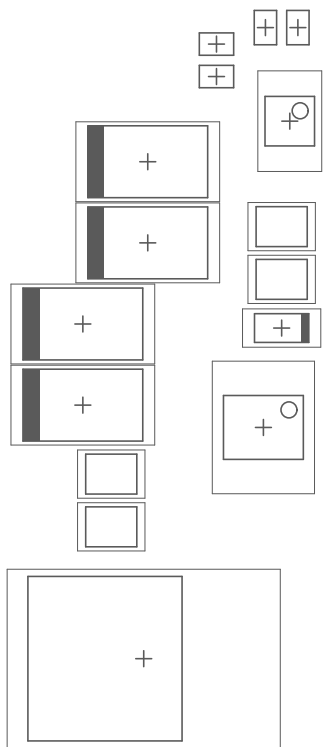


56.134 (mm)

65.024 (mm)

Plate all holes (including vias) which have a hole size below 100mil.
Do not plate holes which are above 200mil.

The battery connection pads extends to the board edge but the edge should not be plated

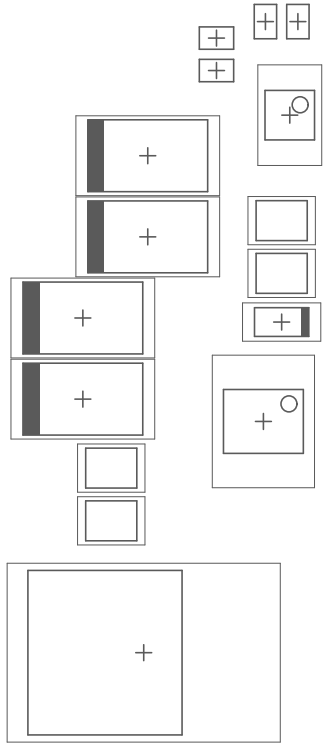


56.134 (mm)

65.024 (mm)

Plate all holes (including vias) which have a hole size below 100mil.
Do not plate holes which are above 200mil.

The battery connection pads extends to the board edge but the edge should not be plated

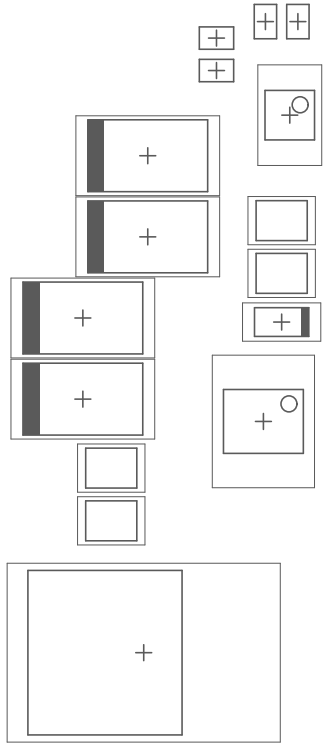


56.134 (mm)

65.024 (mm)

Plate all holes (including vias) which have a hole size below 100mil.
Do not plate holes which are above 200mil.

The battery connection pads extends to the board edge but the edge should not be plated

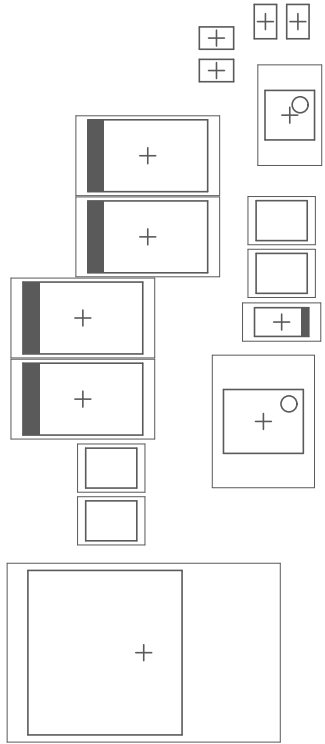


56.134 (mm)

65.024 (mm)

Plate all holes (including vias) which have a hole size below 100mil.
Do not plate holes which are above 200mil.

The battery connection pads extends to the board edge but the edge should not be plated

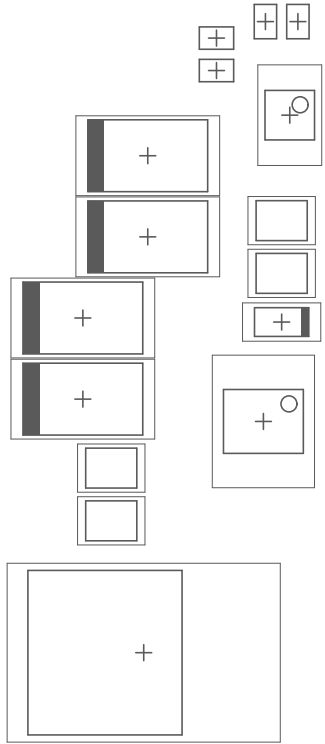


56.134 (mm)

65.024 (mm)

Plate all holes (including vias) which have a hole size below 100mil.
Do not plate holes which are above 200mil.

The battery connection pads extends to the board edge but the edge should not be plated

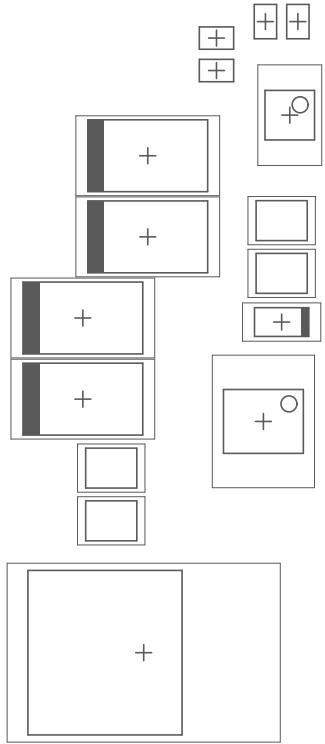


56.134 (mm)

65.024 (mm)

Plate all holes (including vias) which have a hole size below 100mil.
Do not plate holes which are above 200mil.

The battery connection pads extends to the board edge but the edge should not be plated

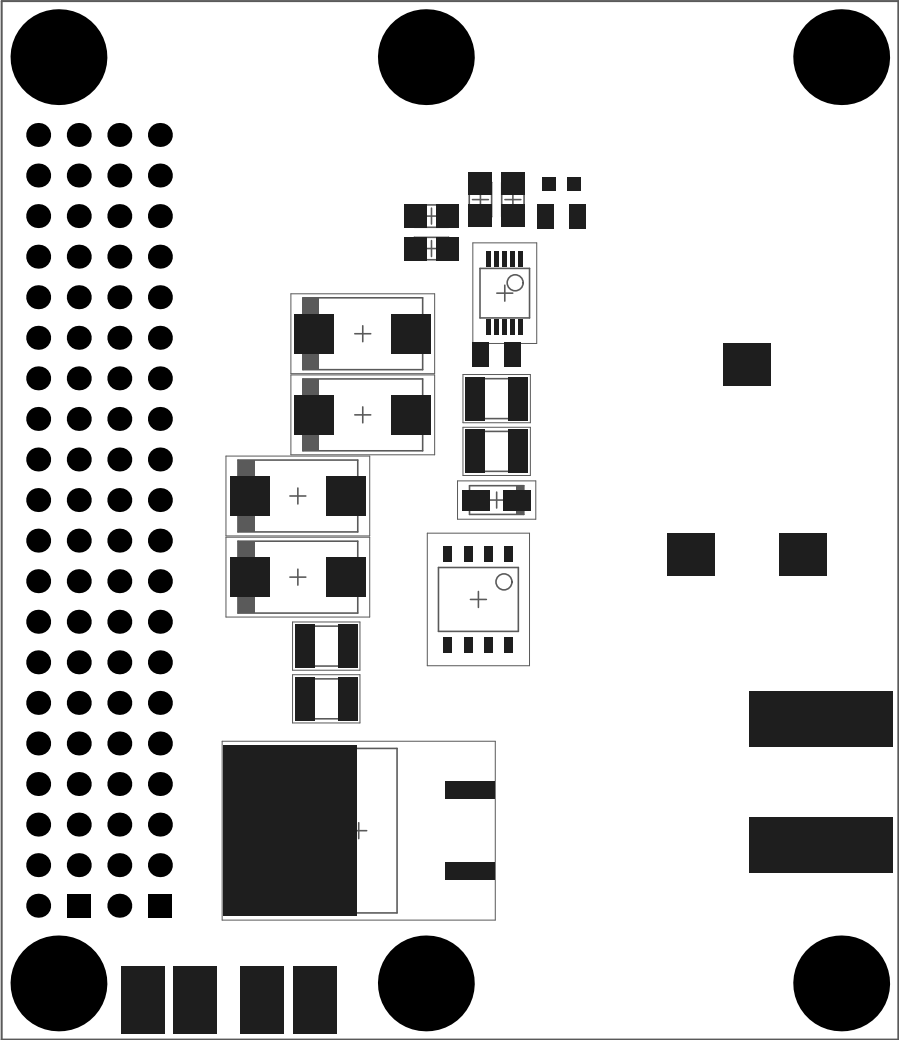


56.134 (mm)

65.024 (mm)

Plate all holes (including vias) which have a hole size below 100mil.
Do not plate holes which are above 200mil.

The battery connection pads extends to the board edge but the edge should not be plated

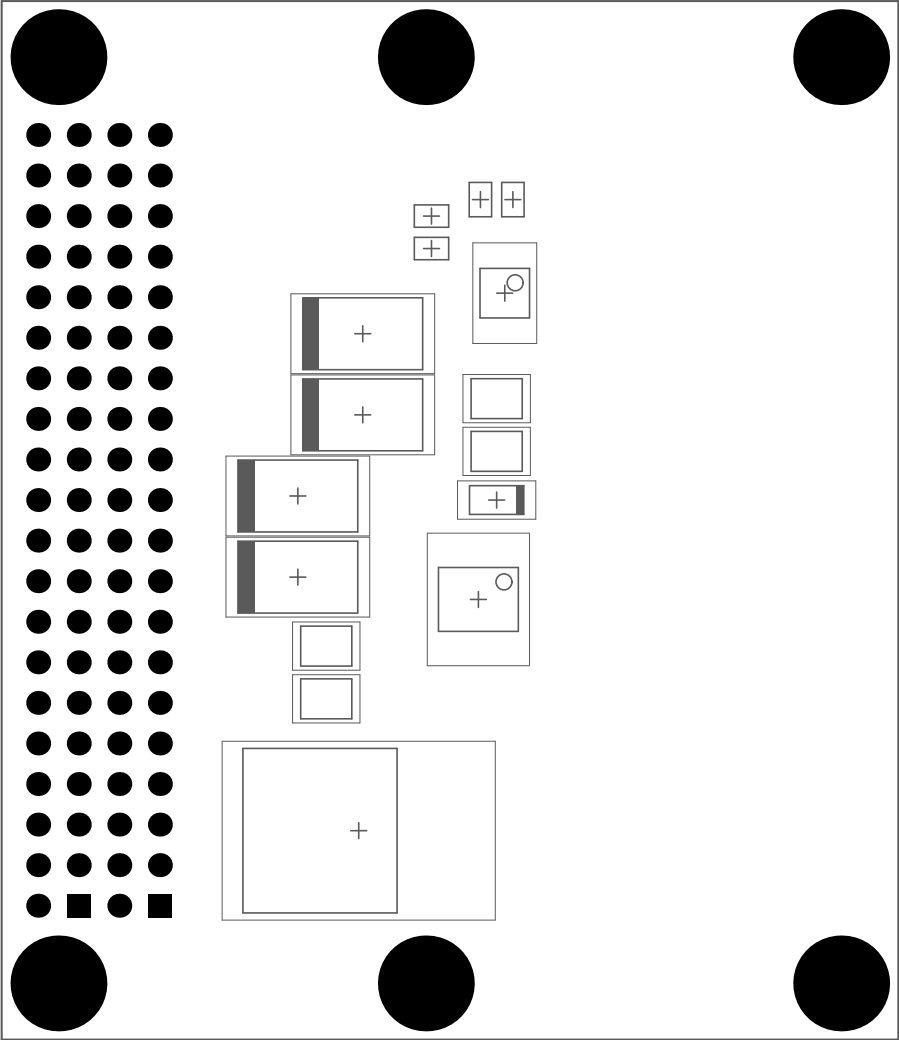


56.134 (mm)

65.024 (mm)

Plate all holes (including vias) which have a hole size below 100mil.
Do not plate holes which are above 200mil.

The battery connection pads extends to the board edge but the edge should not be plated

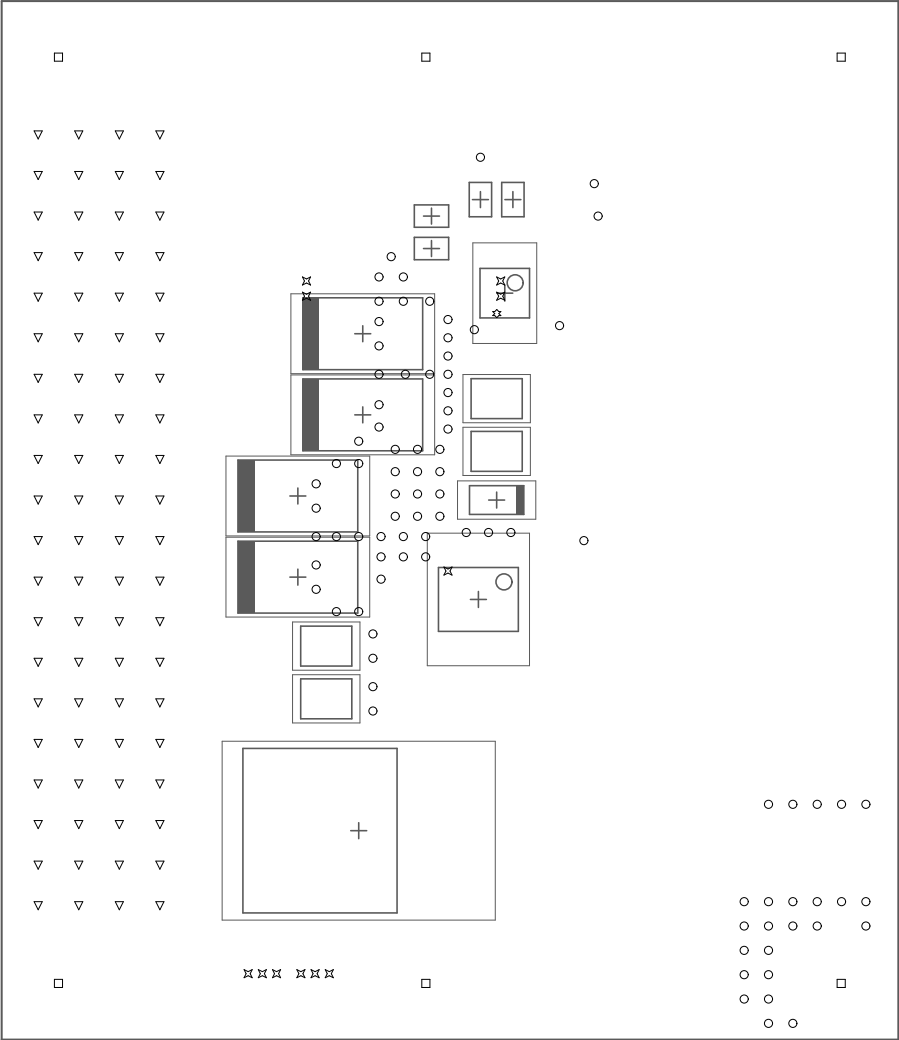


56.134 (mm)

65.024 (mm)

Plate all holes (including vias) which have a hole size below 100mil.
Do not plate holes which are above 200mil.

The battery connection pads extends to the board edge but the edge should not be plated



56.134 (mm)

65.024 (mm)

Plate all holes (including vias) which have a hole size below 100mil.
Do not plate holes which are above 200mil.

The battery connection pads extends to the board edge but the edge should not be plated

