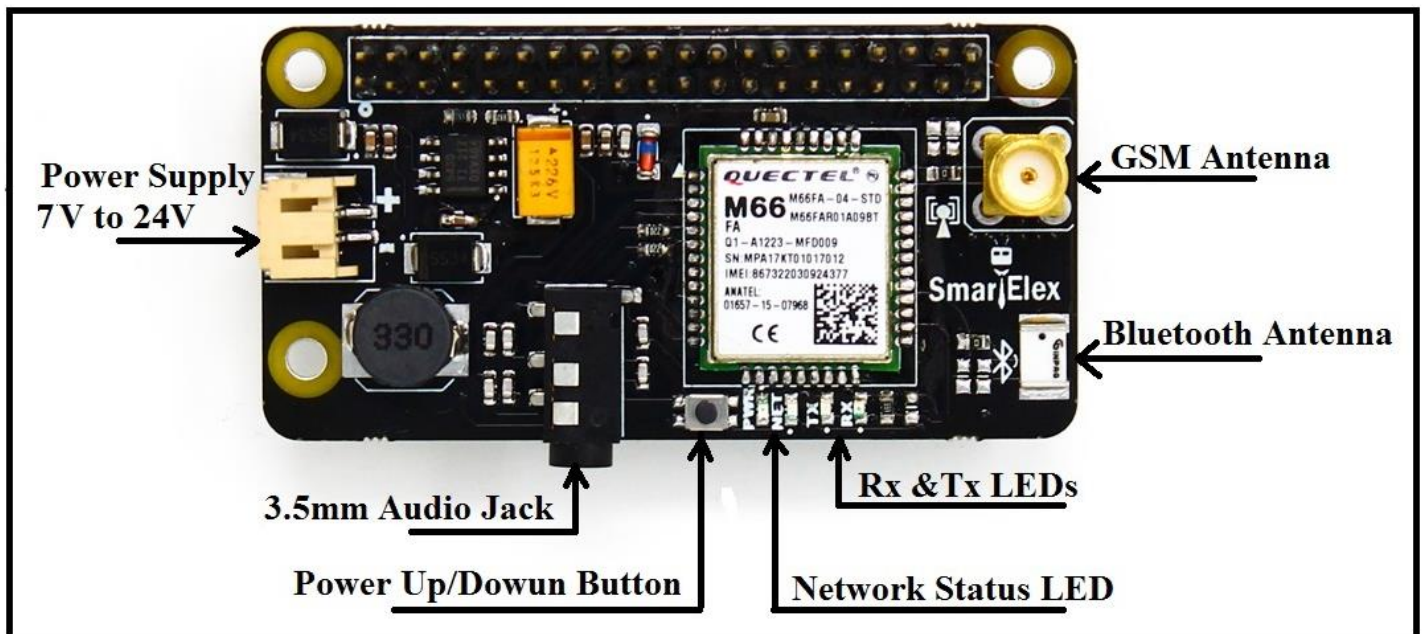


SmartElex GSM HAT



SmartElex GSM HAT connects your Raspberry Pi to a cellular GSM Network! It directly plugs onto your Raspberry Pi and allows you to send/receive SMS, makes/answer calls

The HAT uses the Quectel M66 Module. All communication with the HAT is through a serial interface. AT commands are used to configure and communicate with the HAT. The HAT allows you to use a software serial port on your Raspberry Pi. An onboard 3.5mm Audio Jack allows you to connect a headphone to answer calls.



Features:

- Quad-band module (850/ 900/ 1800/ 1900MHz).
- Works on 7V ~ 24V.
- Operates at -35° C ~ +80° C.
- Include Onboard Bluetooth BT 3.0 with antenna.
- Controlled via AT commands.
- Autobauding 4800bps to 115200bps.
- Maximum download speed 85.6kbps.
- Send/Receive SMS
- Make/Receive voice call with 3.5mm audio jack.

HAT Connection with Raspberry Pi:

HAT	Raspberry Pi Pins
Rx	GPIO14 / BCM14 /UART0 Tx
Tx	GPIO15 / BCM15/ UART0 Rx
Reset	GPIO25 / BCM25

Note:

To Power on HAT Press Power button for moment (5s to 10s) and press same button to power down shield.