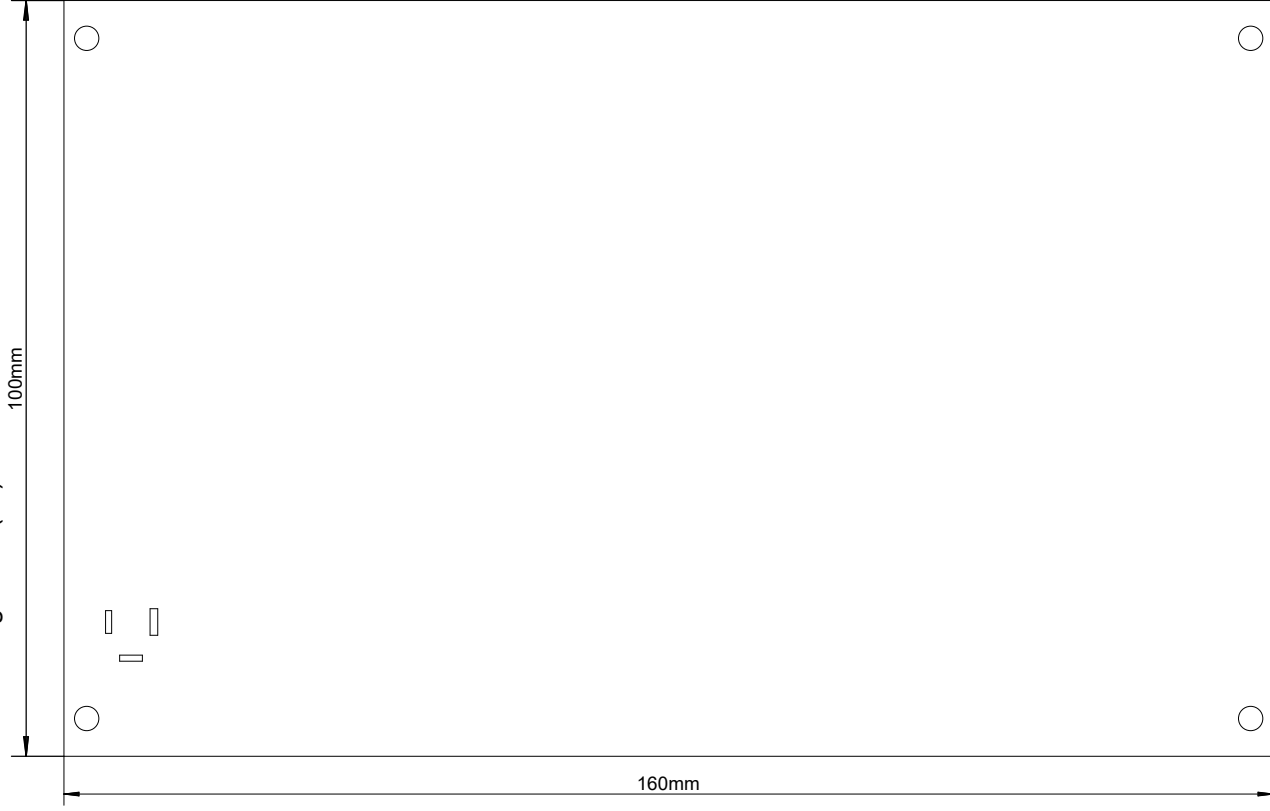
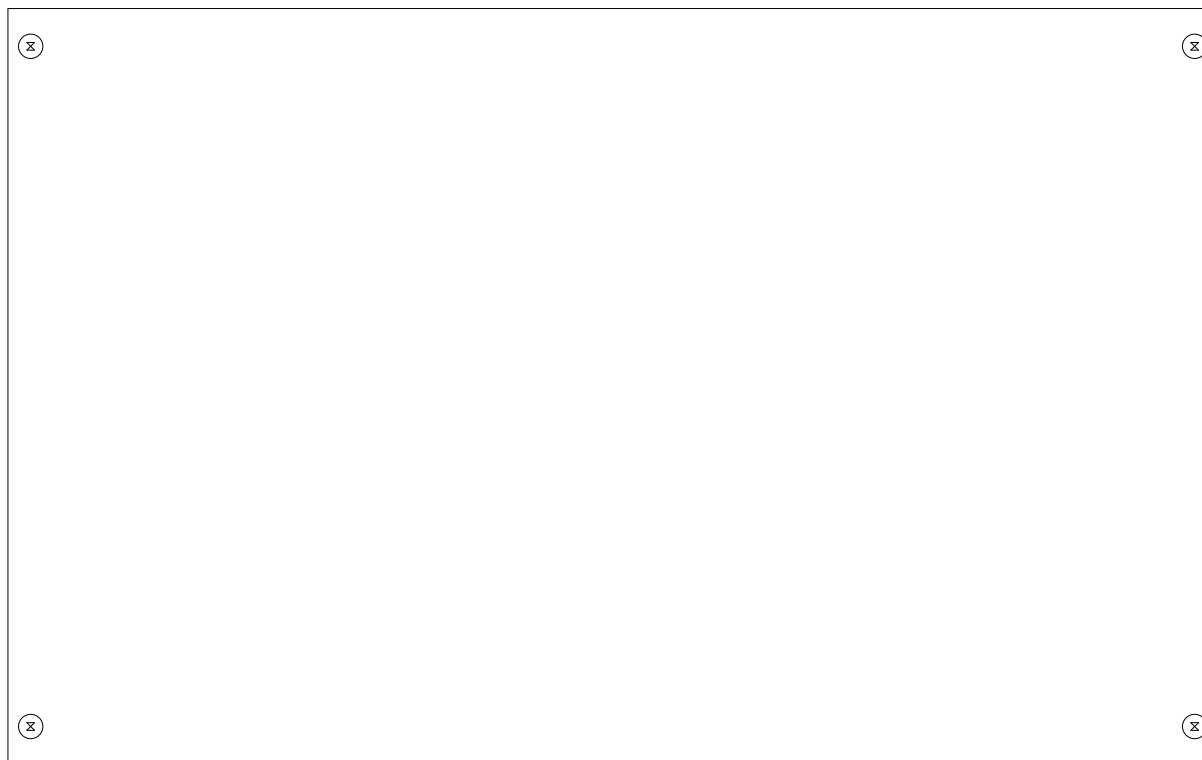


**NOTE:**  
Milling for  
long-holes (3x)

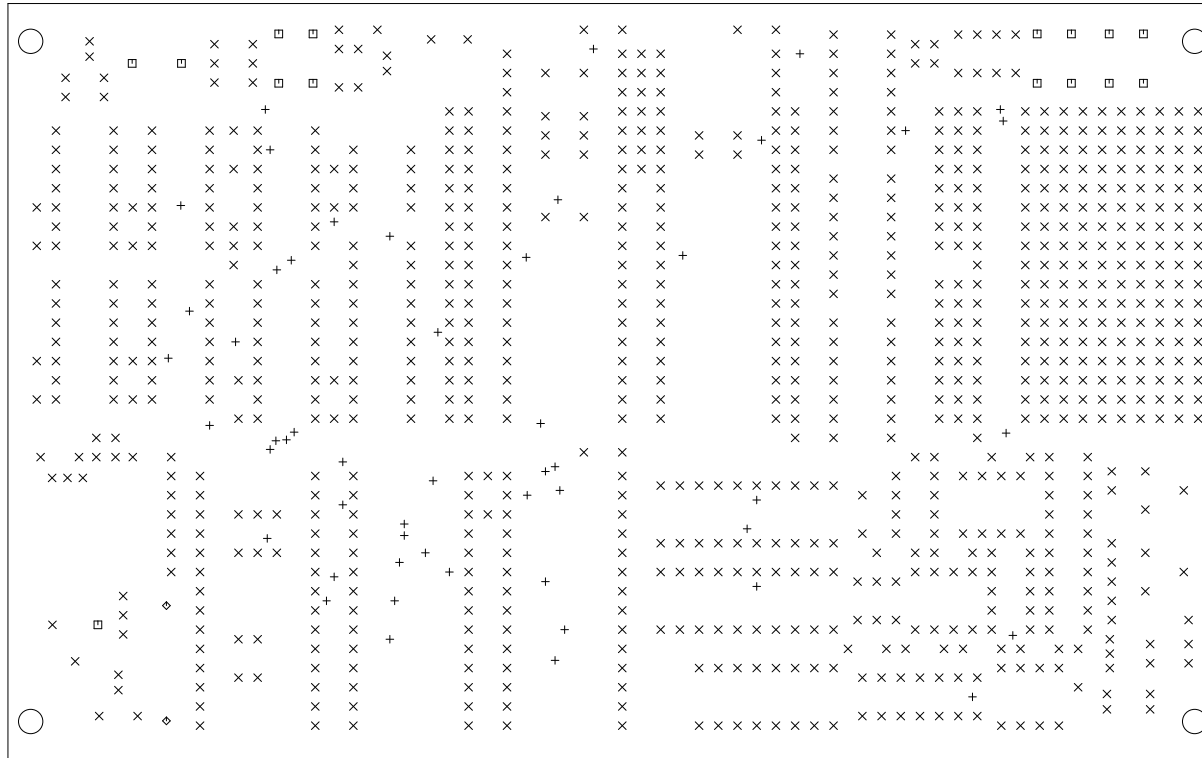




Sym	Nº	Mils	MM	Qty	Plated
+	1	20	0.50	52	YES
x	2	31	0.80	893	YES
▣	3	39	1.00	15	YES
◇	4	55	1.40	2	YES
⊠	5	126	3.20	4	NOT

LAYER-STACK

01-20



Sym	Nº	Mils	MM	Qty	Plated
+	1	20	0.50	52	YES
x	2	31	0.80	893	YES
▣	3	39	1.00	15	YES
◊	4	55	1.40	2	YES
z	5	126	3.20	4	NOT

LAYER-STACK  
01-16