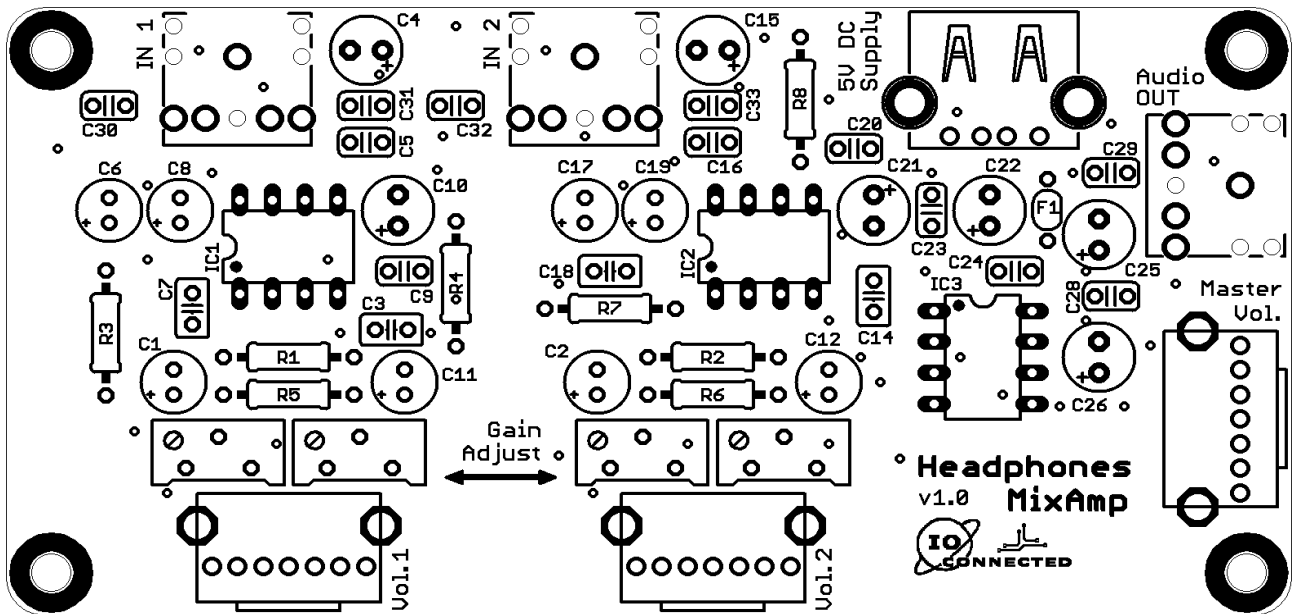


# Stereo – Dual Input HEADPHONES AMPLIFIER / MIXER v1.0

coreWeaver. 2021

## Layout and Bill of Materials



\*Scaled view. PCB's Dimensions: 100 x 49.5 x 1mm (L x W x T)

Part	Value	Package	Description
C1	10uF	2 x 5mm, TH	POLARIZED CAPACITOR
C2	10uF	2 x 5mm, TH	POLARIZED CAPACITOR
C3	1nF	2.5 x 5mm, TH	POLARIZED CAPACITOR
C4	100uF	2.5 x 6mm, TH	POLARIZED CAPACITOR
C5	100nF	2.4 x 4.4mm, TH	CERAMIC CAPACITOR
C6	0.47uF	2 x 5mm, TH	POLARIZED CAPACITOR
C7	1nF	2.5 x 5mm, TH	POLARIZED CAPACITOR
C8	10uF	2 x 5mm, TH	POLARIZED CAPACITOR
C9	100nF	2.4 x 4.4mm, TH	CERAMIC CAPACITOR
C10	100uF	2.5 x 6mm, TH	POLARIZED CAPACITOR
C11	10uF	2 x 5mm, TH	POLARIZED CAPACITOR
C12	10uF	2 x 5mm, TH	POLARIZED CAPACITOR

C14	1nF	2.5 x 5mm, TH	POLARIZED CAPACITOR
C15	100uF	2.5 x 6mm, TH	POLARIZED CAPACITOR
C16	100nF	2.4 x 4.4mm, TH	CERAMIC CAPACITOR
C17	0.47uF	2 x 5mm, TH	POLARIZED CAPACITOR
C18	1nF	2 x 5mm, TH	POLARIZED CAPACITOR
C19	10uF	2 x 5mm, TH	POLARIZED CAPACITOR
C20	100nF	2.4 x 4.4mm, TH	CERAMIC CAPACITOR
C21	100uF	2.5 x 6mm, TH	POLARIZED CAPACITOR
C22	100uF	2.5 x 6mm, TH	POLARIZED CAPACITOR
C23	100nF	2.4 x 4.4mm, TH	CERAMIC CAPACITOR
C24	100nF	2.4 x 4.4mm, TH	CERAMIC CAPACITOR
C25	100uF	2.5 x 6mm, TH	POLARIZED CAPACITOR
C26	100uF	2.5 x 6mm, TH	POLARIZED CAPACITOR
C28	47nF	2.4 x 4.4mm, TH	CERAMIC CAPACITOR
C29	47nF	2.4 x 4.4mm, TH	CERAMIC CAPACITOR
C30	47nF	2.4 x 4.4mm, TH	CERAMIC CAPACITOR
C31	47nF	2.4 x 4.4mm, TH	CERAMIC CAPACITOR
C32	47nF	2.4 x 4.4mm, TH	CERAMIC CAPACITOR
C33	47nF	2.4 x 4.4mm, TH	CERAMIC CAPACITOR
CON1	USB-A	TH, RECEPTACLE	USB A Type (DC Input)
CON2	Audio Input 1	PJ307	Stereo Audio Connector Print.
CON3	Audio Input 2	PJ307	Stereo Audio Connector Print.
CON4	Audio Output	PJ307	Stereo Audio Connector Print.
F1	Fuse 60V / 400mA	PTC FRX04060F	Resettable Fuse
IC1	LM386	DIP08	Low Voltage Audio Power Amplifier
IC2	LM386	DIP08	Low Voltage Audio Power Amplifier
IC3	TDA7050	DIP08	Dual Audio Amplifier
R1	680R	0207, TH	RESISTOR, 1/4W
R2	680R	0207, TH	RESISTOR, 1/4W
R3	680R	0207, TH	RESISTOR, 1/4W
R4	10R	0207, TH	RESISTOR, 1/4W
R5	680R	0207, TH	RESISTOR, 1/4W
R6	680R	0207, TH	RESISTOR, 1/4W
R7	680R	0207, TH	RESISTOR, 1/4W
R8	10R	0207, TH	RESISTOR, 1/4W
RV1	LOG50K	RK14K12	ALPS Stereo Pot.
RV2	LOG50K	RK14K12	ALPS Stereo Pot.
RV3	LOG50K	RK14K12	ALPS Stereo Pot.
TRIMMER1	200k	64Y-200k Spindle	Precision potentiometer, upright
TRIMMER2	200k	64Y-200k Spindle	Precision potentiometer, upright
TRIMMER3	200k	64Y-200k Spindle	Precision potentiometer, upright
TRIMMER4	200k	64Y-200k Spindle	Precision potentiometer, upright