

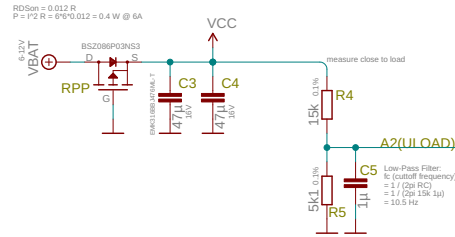
Jetpack Cognition Lab, Inc.
Supreme Machines
Sensorimotor



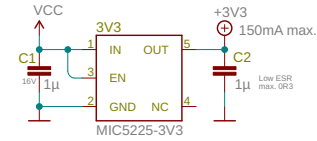
---A networked motor controller for distributed actuator systems, such as legged robots, robotic arms, or any other kind of PWM-driven loads.

The boards communicate via RS485 and provide rich sensory measurements such as current, voltage, temperature and position. An integrated H-Bridge allows for various control modes.

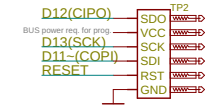
Reverse Polarity Protection and Voltage Monitoring



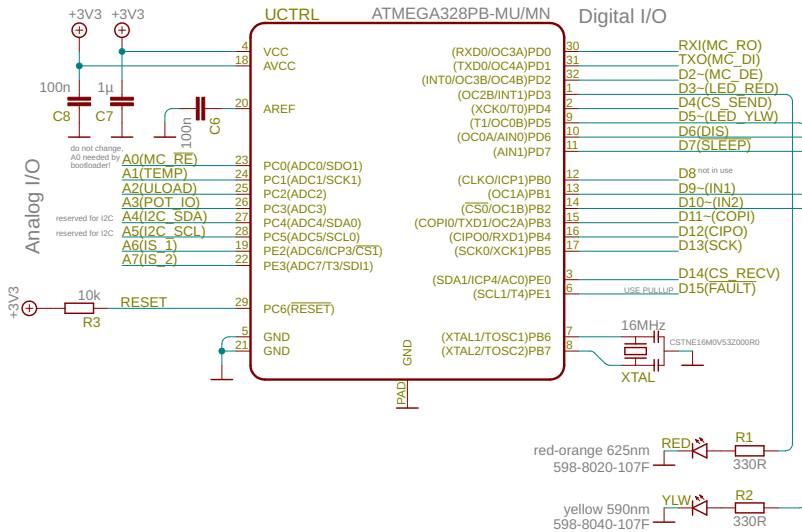
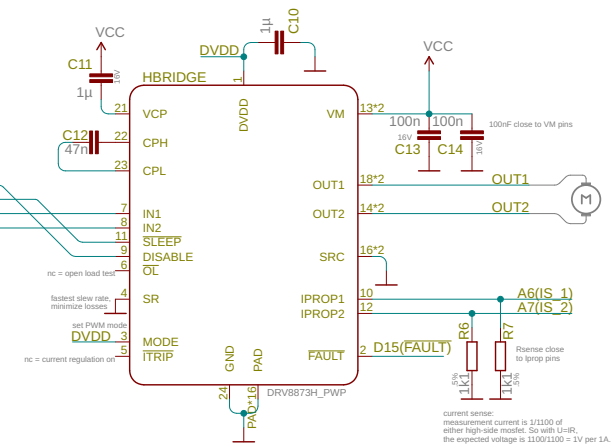
+3V3 Voltage Regulator



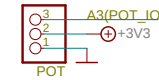
In-System-Programmer



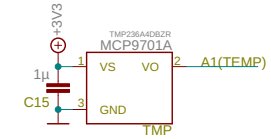
H-Bridge



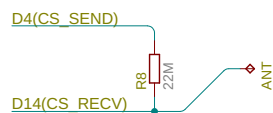
Potentiometer



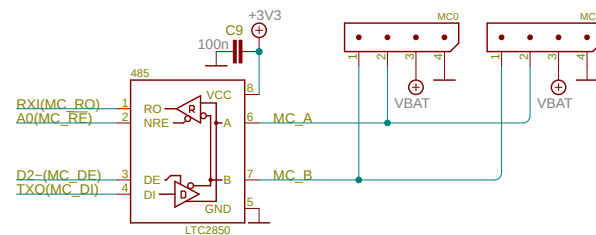
Temperature Sensor



Capacitive Touch Sensor



Bus Communication



Sensorimotor, Revision 1.3
Matthias Kubisch
May 6th, 2021
Creative Commons 4.0, CC-BY-SA

Note: Unless otherwise stated, X5R/X7R capacitors with min. 16V should be used and all resistors shall have 1% tolerance.