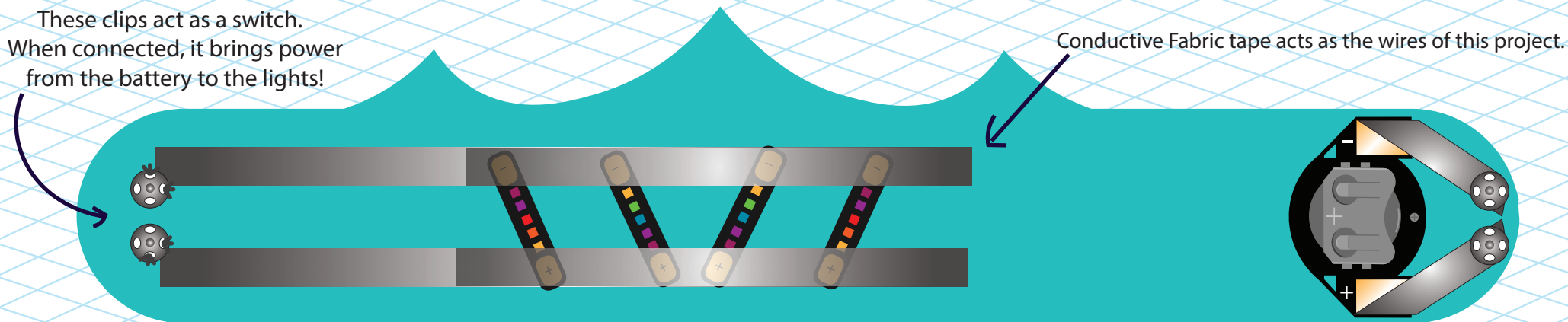




CROWN HEAD BAND

WEARABLE TECH PROJECT #1



STEP 1

Use a tape measure to measure your head. Cut a strip of fabric the same length to make sure it fits around your head. Add notches and shapes to make it look like a crown!



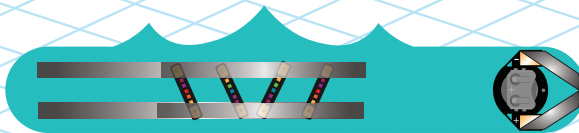
STEP 2

Lay down the conductive tape into rails that will connect to the LEDs and to the battery.



STEP 3

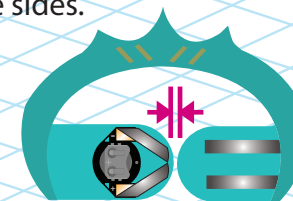
Lay out the LED strips and battery in your desired spot. Use more conductive tape to secure these in place.



STEP 4

Touch the ends of the battery tape against the LED Strip connected tape to test the circuit. The lights should come on.

If not, check for shorts by making sure any positive sides don't touch negative sides.



STEP 5

Hand stitch or hammer in the snap fasteners in place to act as the switch in the circuit. Finished!

Find more projects and ideas at
bit.ly/3pN5qk9

