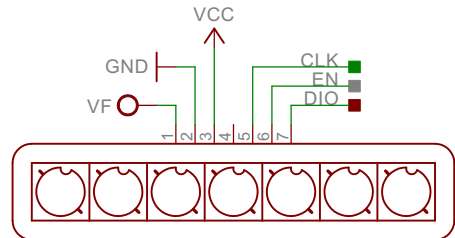
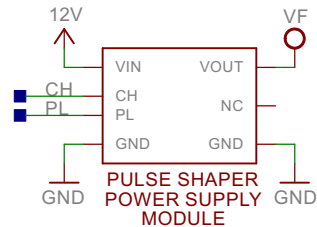


#1 DISPLAY



#2 DISPLAY



- CLK MUST BE CONNECTED TO THE ARDUINO SCK PIN (SPI)  
DIN TO THE MOSI PIN (SPI)
- EN CAN BE CONNECTED TO ANY ARDUINO DIGITAL PIN
- PL, CH CAN BE CONNECTED TO ANY ARDUINO DIGITAL PIN
- DIO - DOUT OF #1 DISPLAY CONNECTED TO DIN OF #2 DISPLAY

- ! VCC AND CONTROL PINS MUST HAVE THE SAME VOLTAGE LEVEL 5V-3.3V
- ! PULSE SHAPER POWER SUPPLY MODULE IS REQUIRED
- ! EXTERNAL 12V POWER SUPPLY IS REQUIRED
- ! WWW.FLIPO.IO

**FLIPO**