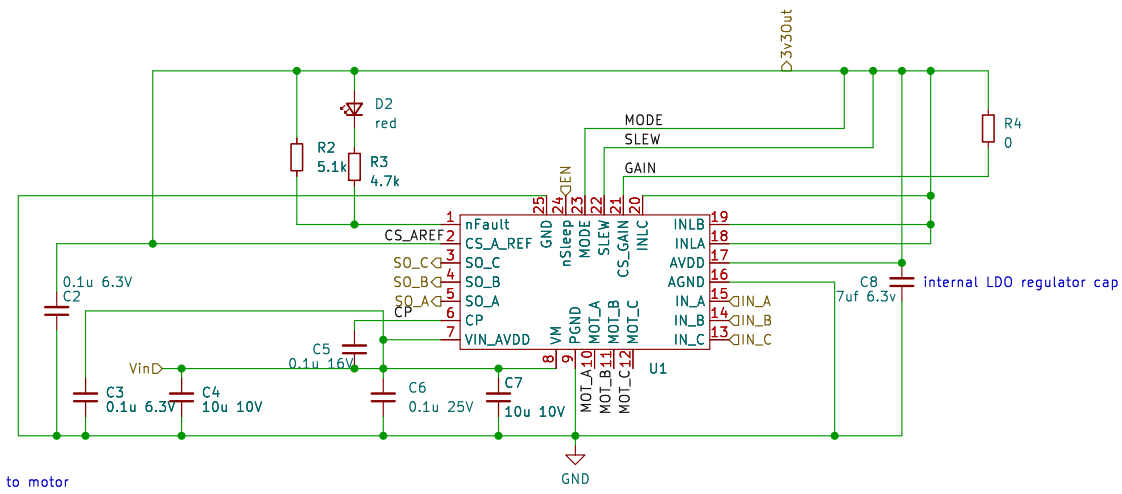


|                           |       |         |
|---------------------------|-------|---------|
| Sheet: /                  |       |         |
| File: pro_micro.kicad_sch |       |         |
| <b>Title:</b>             |       |         |
| Size: A4                  | Date: | Rev:    |
| KiCad E.D.A. 8.0.1        |       | Id: 1/3 |



to motor

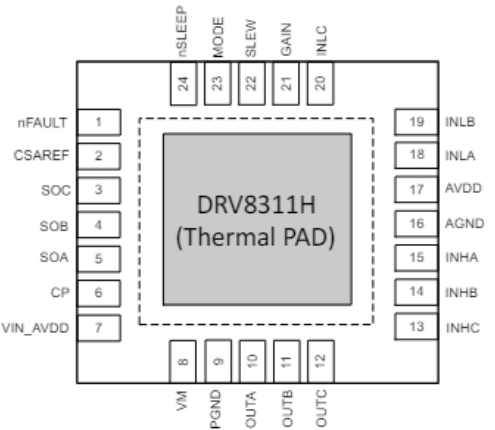
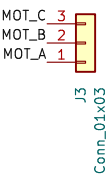


Table 8-5. Hardware Pins Decode

| Configuration             | GAIN     | SLEW     | MODE                         |
|---------------------------|----------|----------|------------------------------|
| Pin tied to AGND          | 0.25 V/A | 35 V/us  | 6x PWM Mode and 9A OCP Level |
| Pin to 47 kΩ tied to AGND | 0.5 V/A  | 75 V/us  | 6x PWM Mode and 5A OCP Level |
| Pin to Hi-Z               | 1 V/A    | 180 V/us | 3x PWM Mode and 9A OCP Level |
| Pin tied to AVDD          | 2 V/A    | 230 V/us | 3x PWM Mode and 5A OCP Level |

Sheet: /Motor drive/  
File: MotorDrive.kicad\_sch

**Title:**

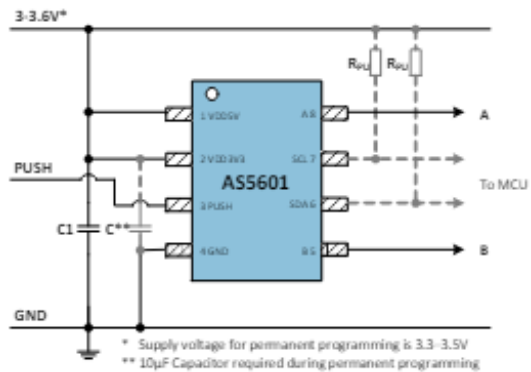
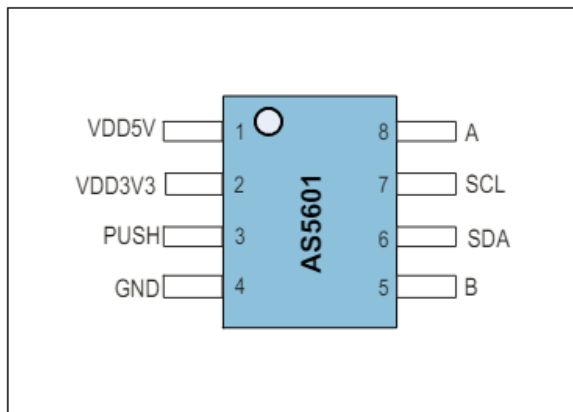
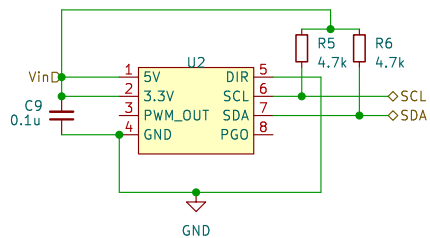
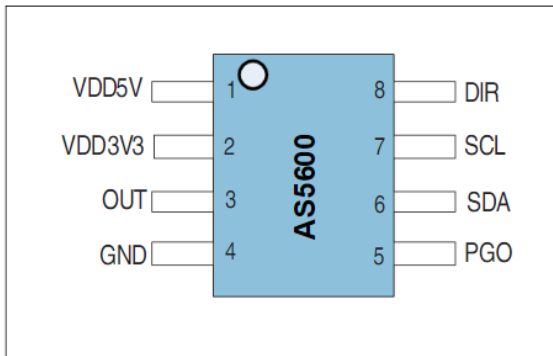
Size: A4  
KiCad E.D.A. 8.0.1

Date:

**Rev:**

Id: 2/3

Figure 3:  
SOIC-8 Pin-Out



Sheet: /encoder/  
File: encoder\_sch.kicad\_sch

**Title:**

Size: A4  
KiCad E.D.A. 8.0.1

Date:

Rev:

Id: 3/3