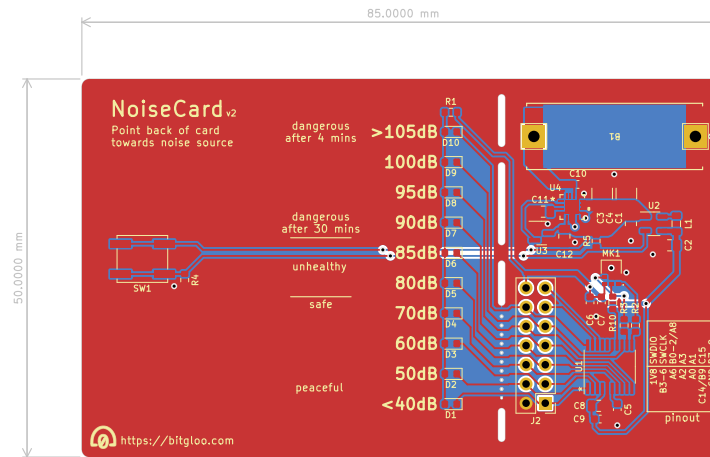


## FABRICATION DRAWING



### NOTES

1. PRINTED CIRCUIT BOARD MADE FROM NEMA GRADE FR-4 EPOXY LAMINATE.
2. ALL DIMENSIONS ARE GIVEN IN MILLIMETERS.
3. CIRCUIT PATHS ARE FOR REFERENCE ONLY.
4. HOLE SIZES SHOWN ARE FINISHED DIAMETERS AFTER PLATING.
5. APPLY GREEN SOLDER MASK ON PLATED SURFACES.
6. SILKSCREEN TOP SIDE USING WHITE INK.
7. ALL VIAS ARE TENTED ON BOTH SIDES.
8. 2 COPPER LAYERS.
9. 0.8MM BOARD THICKNESS.
10. COPPER THICKNESS 1 OZ.

### FILES:

DRL=DRILL TOOL SIZE INFORMATION (MM)  
GM1=OUTLINE  
GTL=TOP LAYER  
GBL=BOT LAYER  
GTO=SILKSCREEN TOP  
GBO=SILKSCREEN BOT  
GTS=SOLDER MASK TOP  
GBS=SOLDER MASK BOT  
GTP=TOP STENCIL  
GBP=BOTTOM STENCIL  
POS=TOP PLACE FILE  
BOM=BILL OF MATERIALS  
SCHEMATIC  
FABDRAWING

Released under the CERN Open Hardware License Version 2 – Strongly Reciprocal  
Drawn by Clyne Sullivan

**bitgloo**

Sheet:

File: noisecard.kicad\_pcb

**Title: NoiseCard**

Size: A4 Date: 2024-06-29

KiCad E.D.A. kicad 7.0.10

**Rev: 2**

Id: 1/1