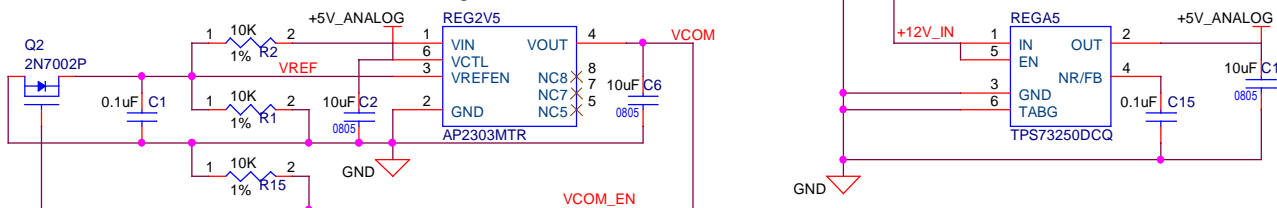
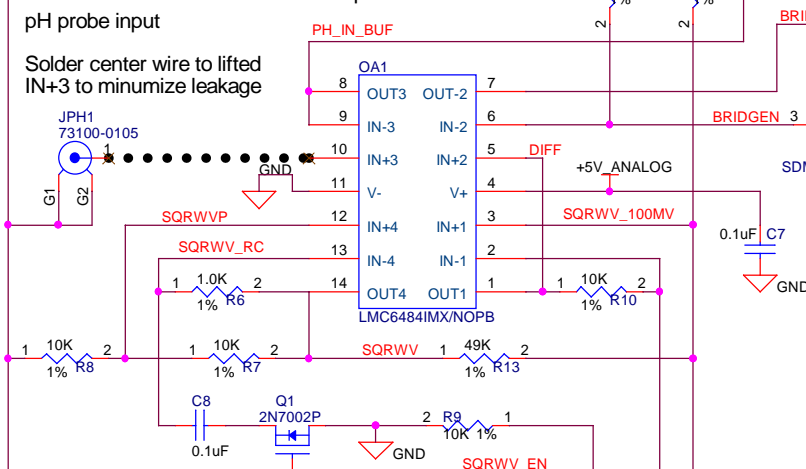


+12V at 8A Input

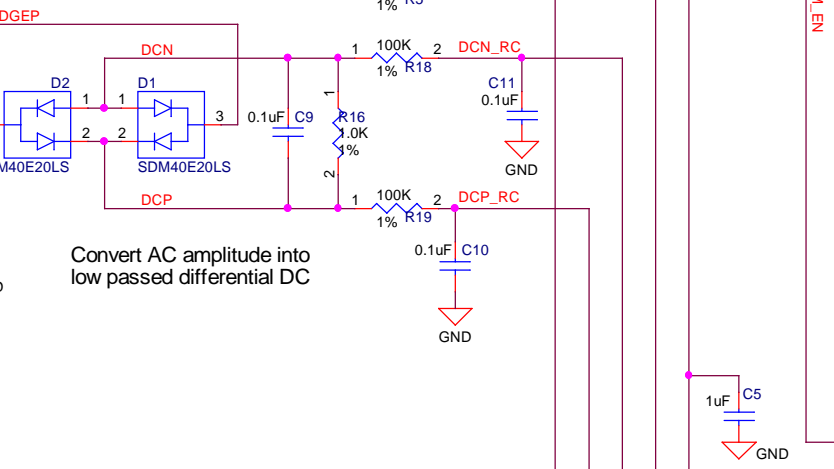
Generate +5V_ANALOG/2 offset voltage



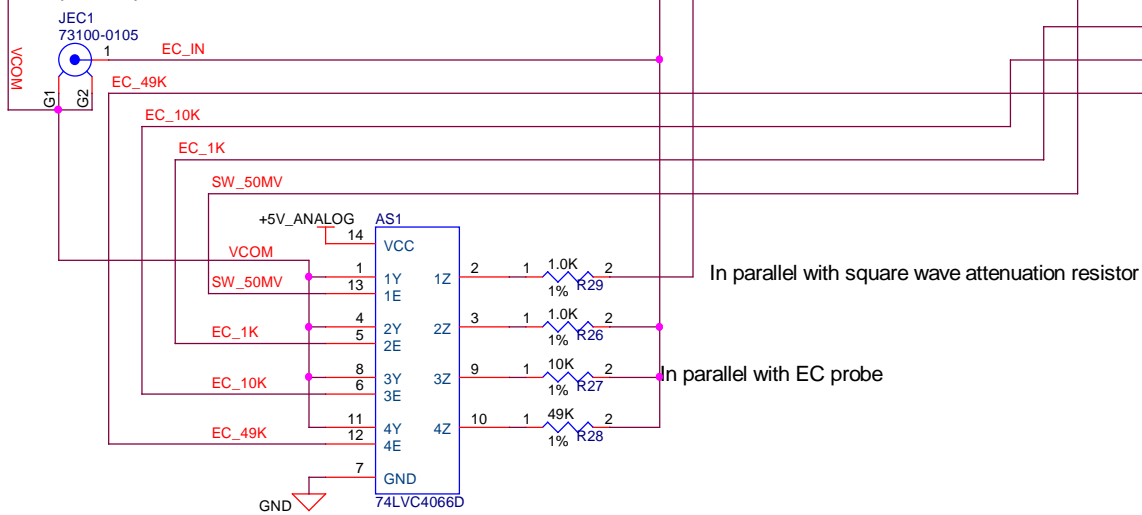
Drop +5V square wave amplitude 50:1 to ~100mV



Convert AC amplitude into low passed differential DC

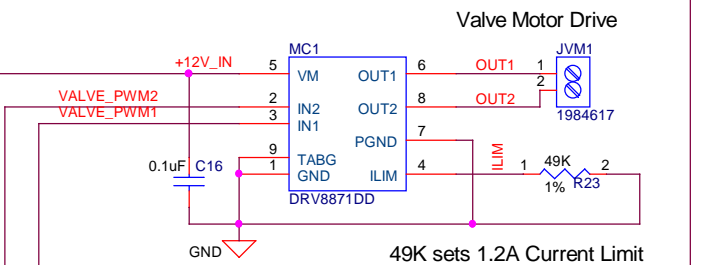


EC probe input

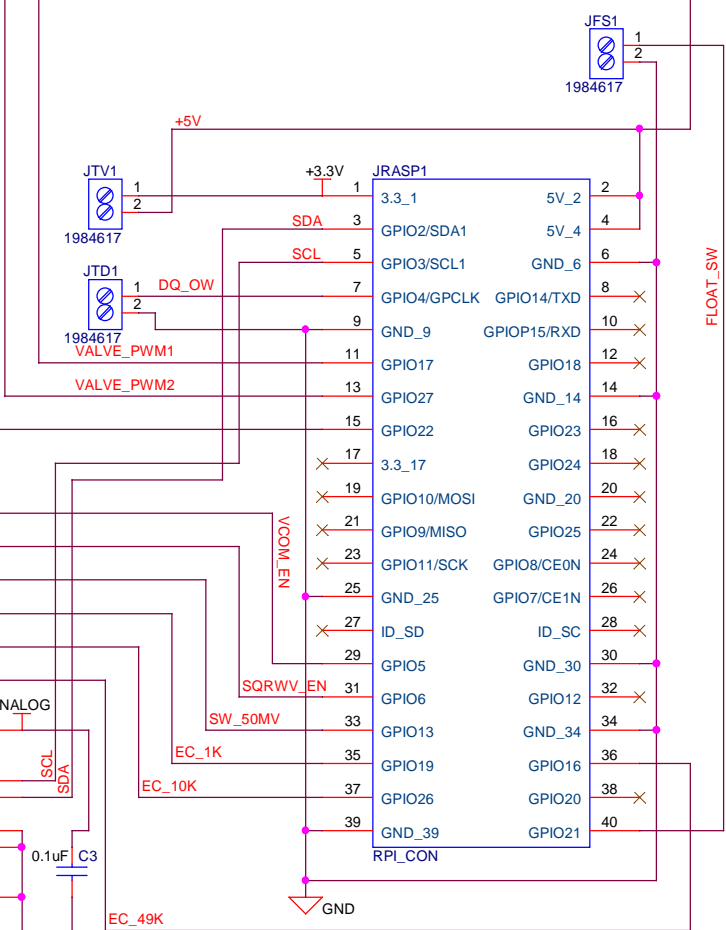


Differential ADC with Programmable Gain Amplifier.
 +/-2V maximum input range
 ADC Csample = 3,2pf and Zin = 2.25M<PGA Gain>.
 For a gain of 2, Zin > 1M ohms

Valve Motor Drive



49K sets 1.2A Current Limit



/		Root	
Title	SpiroBoard		Root
Size	Document Number	Rev	
B	2016-12311	A04	
Date:	Monday, January 30, 2017	Sheet	1 of 1