

WiFi Terminator

Attention:

- ① Only Android phone is supported.
- ② OTG interface is a requirement.
- ③ Attach WiFi Termination hardware.
- ④ Only 2.4G WiFi signal is supported.

Paralyze all connections under a specific WiFi Hotspot

It will kill all mobile connections under the WiFi hotspot and forbid new comer to connect.

STEP 1: Choose a WiFi hotspot from 'NetStar' or 'Nearby WiFi' or 'WiFi Distribution', then goto the page of 'WiFi Hotspot Detail'.

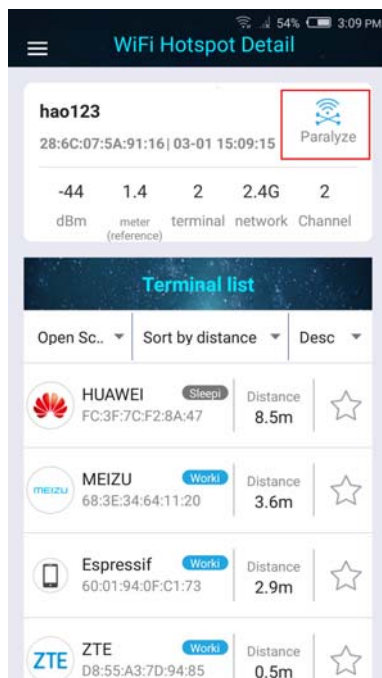


Figure 1-1 WiFi Hotspot Detail

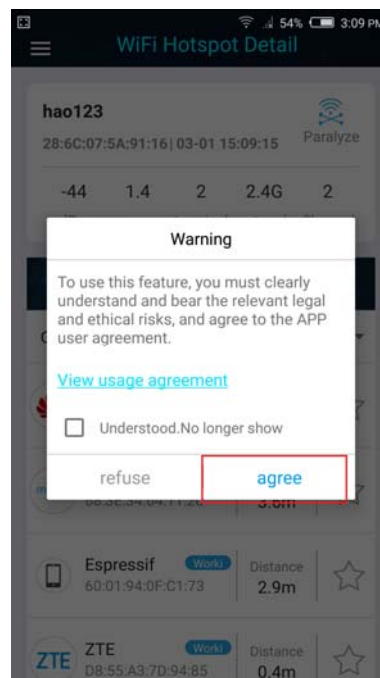


Figure 1-2 User Agreement

STEP2: As show in Figure 1-1, click Image button 'Paralyze'.

STEP3: Click button 'agree', then next. As show in Figure 1-2.

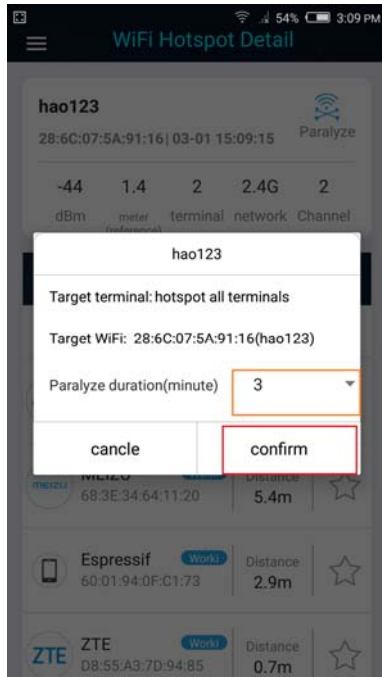


Figure 1-3 Paralyze duration

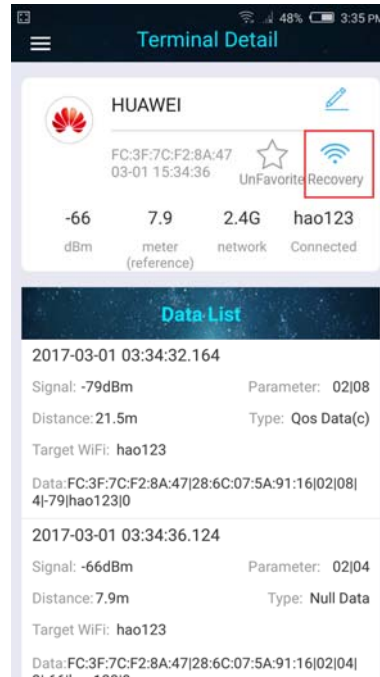


Figure 1-4 Recovery

STEP4: This is a dialog to set duration. Click on the drop-down arrow to select time. And then click 'confirm' to paralyze the WiFi hotspot. As shown in figure 1-3.

If it works then ImageButton 'Paralyze' has changed. As shown in figure 1-4.

You can click ImageButton 'Recovery' to recover the WiFi hotspot.

Paralyze a specific Terminal

It will paralyze only one terminal which connects to a WiFi hotspot.

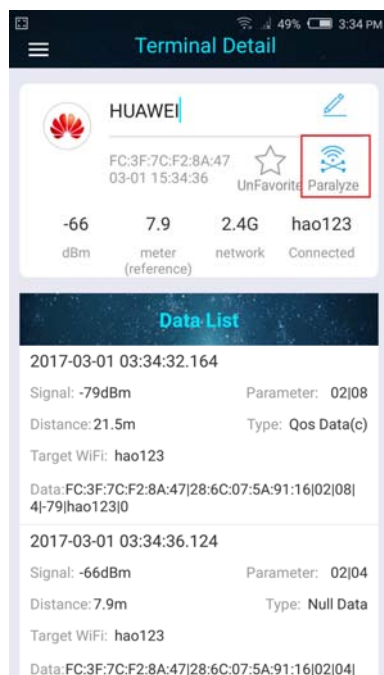


Figure 2-1 Detail Of Terminal

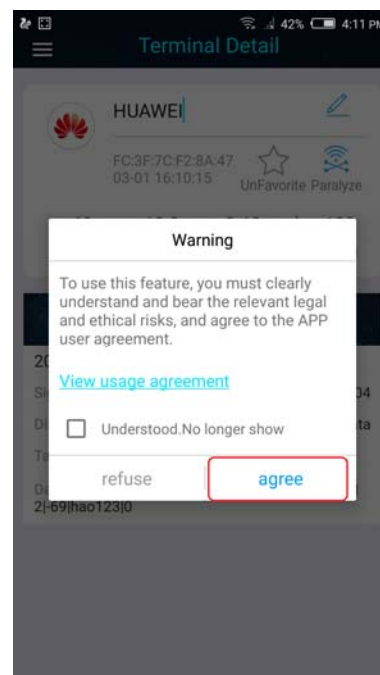


Figure 2-2 User Agreement

STEP1:Select a mobile terminal which already connected one WiFi hotspot.

STEP2:As show in Figure 2-1,Click ImageButton ‘Paralyze’.

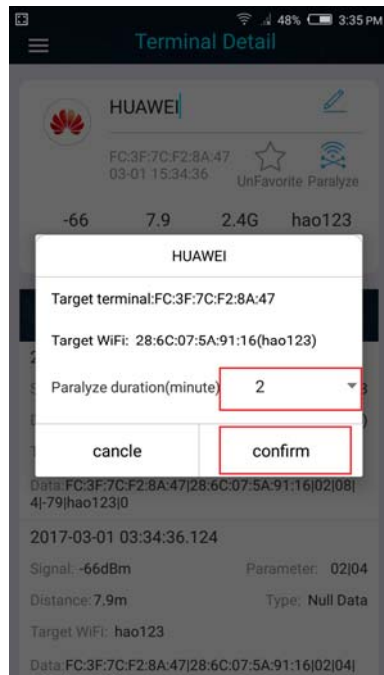


Figure 2-3 Paralyze duration

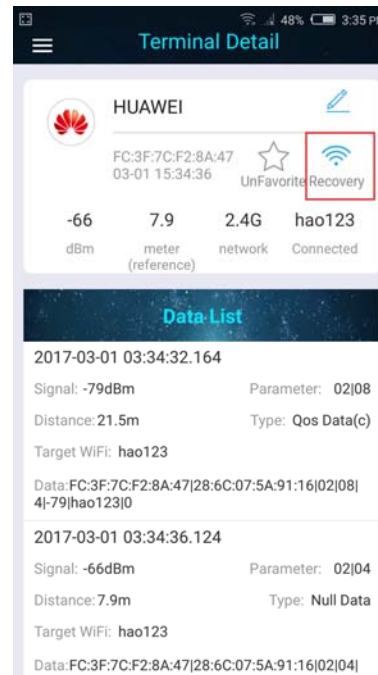


Figure 2-4 Recovery

STEP3: This is a dialog to set duration. Click on the drop-down arrow to select time. And then click ‘confirm’ to paralyze the network of the terminal.As show in Figure 2-3.

If it works then ImageButton ‘Paralyze’ has changed.As show in figure 2-4. You can click ImageButton ‘Recovery’ to recover network of the terminal.

Operation History

Click WiFi Terminator on HomePage goto History page. As show in Figure 3-1



Figure 3-1

You could click ImageButton 'Paralyze' to paralyze the WiFi hotspot or a terminal. You also could click "Recovery" to recover the WiFi hotspot or a terminal.

Buy:

<http://www.smartarduino.com/view.php?id=95104>