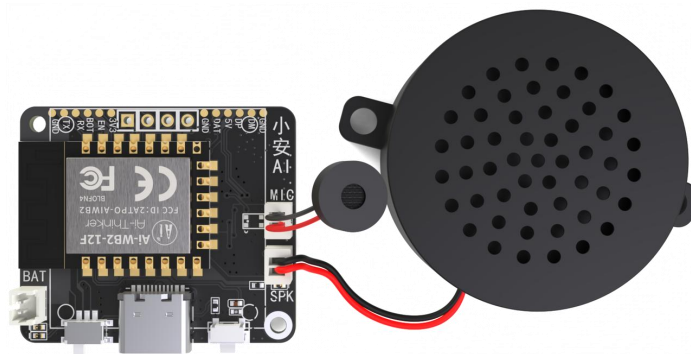


AiPi-PalChat V1: Build Your AI Voice Assistant

AiPi-PalChat V1 is a compact AI voice interaction development board designed by Ai-Thinker for lightweight voice-controlled applications. It supports direct integration with three popular Chinese large language models: **DeepSeek**, **Doubao**, and **Qwen** (Tongyi Qianwen) — enabling natural language interaction with your device straight out of the box.

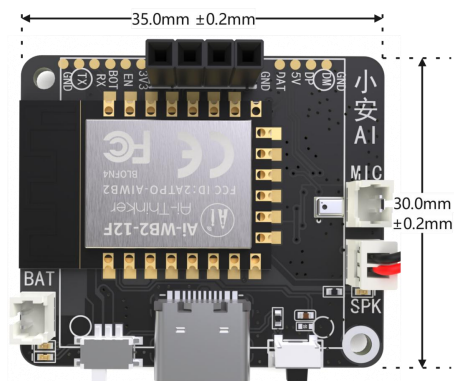


01 Overview

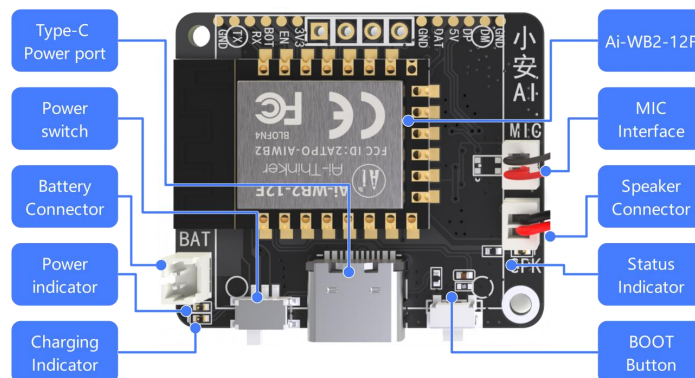
The AiPi-PalChatV1 is a micro voice interaction development board integrated with the XiaoZhi AI smart agent, designed for lightweight smart voice scenarios. Based on the Ai-WB2-12F module from Ai-Thinker, it features high integration and cost-effectiveness, supporting offline voice wake-up and voice interruption functions. This development board, combined with a 2W/8Ω speaker and dual power supply modes (Type-C + battery), is suitable for hardware innovation scenarios requiring quick deployment of voice interaction capabilities, such as early education

machines and story machines, and supports voice Q&A and interactive content playback.

02 Size and Dimensions



03 Interface Definition



04 Technical Parameters

Module	Parameter Details
Controller	Ai-Thinker Ai-WB2-12F Module (Wi-Fi/BLE Dual-Mode)
Wake-up Method	Offline Voice Wake-up, Voice Interruption
Speaker Parameters	2W/8Ω Speaker, Optional 4W/3Ω Speaker
Display	0.96-inch IIC OLED Display
Power Supply	Type-C (5V) + Battery
Wake-up Words	Default: "Hello XiaoZhi." Custom wake-up words available. Contact: overseas@aithinker.com for customization.
Development Support	SDK Secondary Development Interface

05 Optional AI Models





06 Core Feature Highlights

- **Offline Voice Interaction:**

Supports long-distance offline voice wake-up, no buttons required, hands-free operation. Also supports voice interruption to enhance the naturalness of interaction.

- **Flexible Power Supply Mode:**

Type-C wired power supply for regular power environments.

Battery-powered design to meet mobile scenario requirements.

- **Lightweight Hardware Configuration:**

Compact board design for easy integration into various devices.

A 2W/8Ω speaker provides clear audio output.

- **WeChat Mini Program Development and Configuration:**

One-click network configuration via WeChat mini program simplifies the device networking process.

Visual smart agent configuration supports custom voice and scene logic.