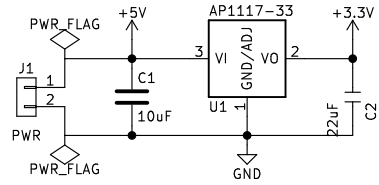
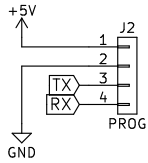


Power



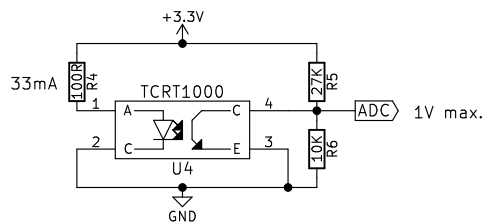
Programming



Fiducials

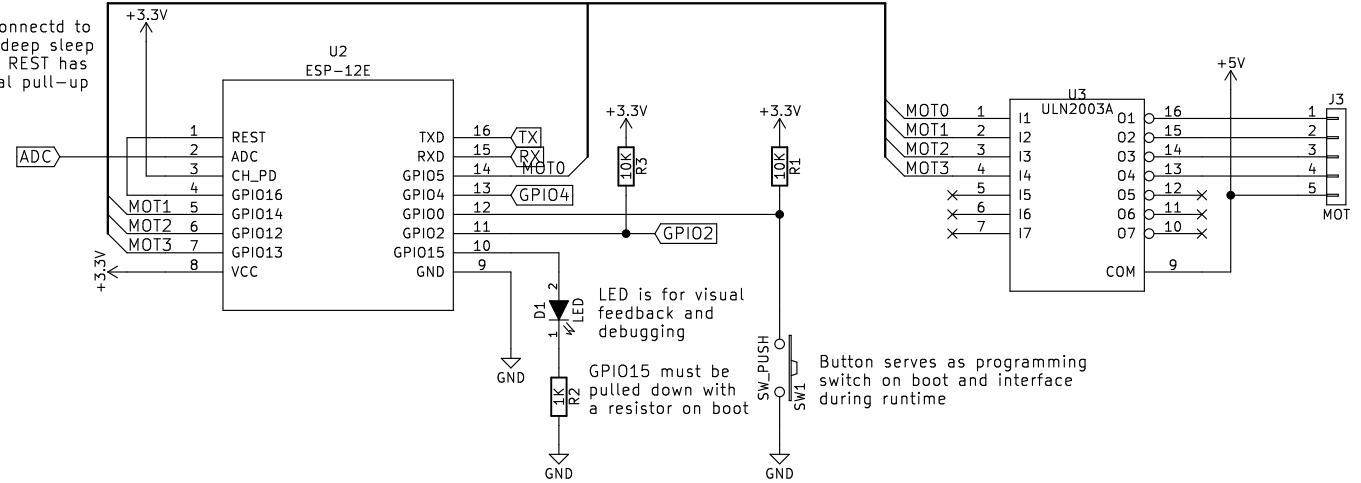


Position control



Internet-of-Things

GPIO16 connect to REST for deep sleep wake-up, REST has an internal pull-up



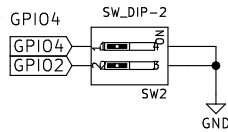
LED is for visual feedback and debugging

GPIO15 must be pulled down with a resistor on boot

Button serves as programming switch on boot and interface during runtime

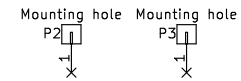
Interface

Use internal pull-up for GPIO4

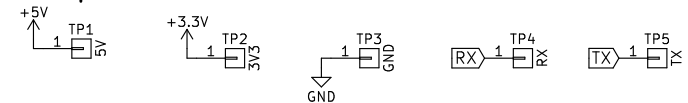


DIP-switch allows to set the Watch Winder behaviour from physical interface

Mounting holes



Power test points



Author: Karl Kangur

Sheet: /
File: iot_mww.sch

Title: Internet-of-Things Mechanical Watch Winder

Size: A4 Date: 2017-09-08

KiCad E.D.A. eschema (6.0.0-rc1-dev-1469-gd619da17c)

Rev: 2.0

Id: 1/1