

For RasPiBox Open and ArduiBox Open enclosure kits



Features enclosure and pcb:

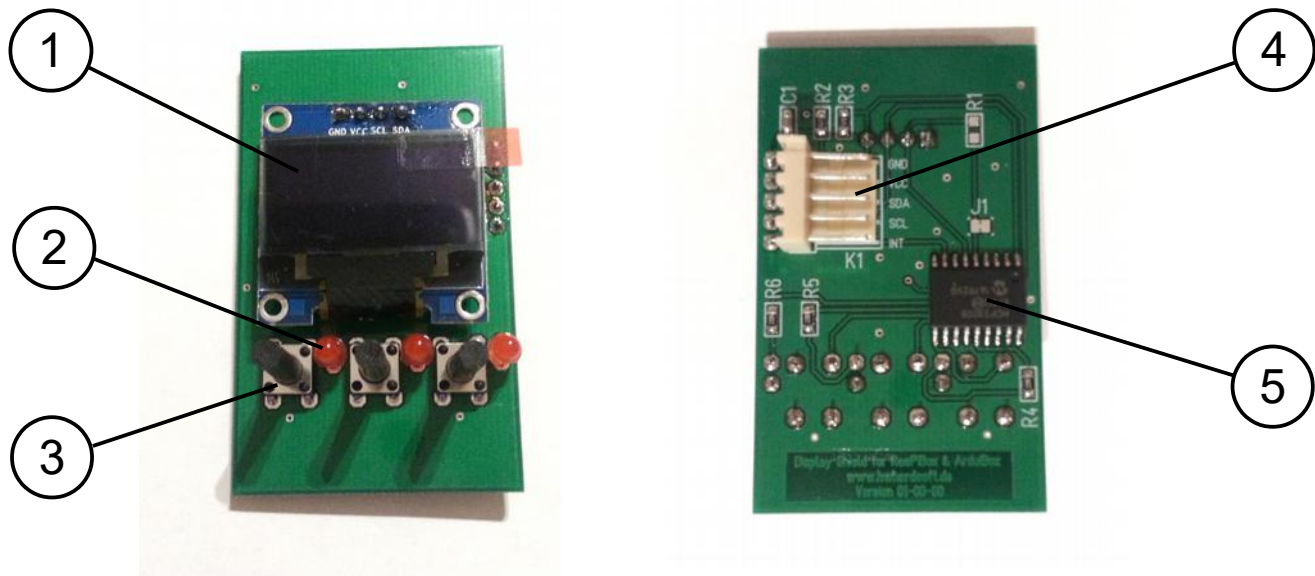
- 0,96" OLED display
- Resolution 128x64 pixel
- Power supply 3 – 5V DC
- I2C communication only 4 wire needed (plus optional interrupt line)
- pcb fits perfectly in ArduiBox and RasPiBox DIN rail kits
- 3 optional buttons (standard version only)
- 3 optional leds (standard version only)
- MCP23008 I2C expander (standard version only)
- Milled transparent front plate (standard version only)
- Python code (for RPI) and C++ code (for Arduino) available
- Outside dimensions: 35,0mm x 57,40mm (W x H)

Display Shield

For RasPiBox Open and ArduiBox Open enclosure kits

Part number table:

Description	Part-No.
Basic (without buttons & leds)	OLEDSHLD-B
Standard (Includes buttons & leds)	OLEDSHLD-S



- ① OLED display
- ② LEDs (optional)
- ③ Buttons (optional)
- ④ Connector for removable cable
- ⑤ MCP23008 I2C communication chip (optional)