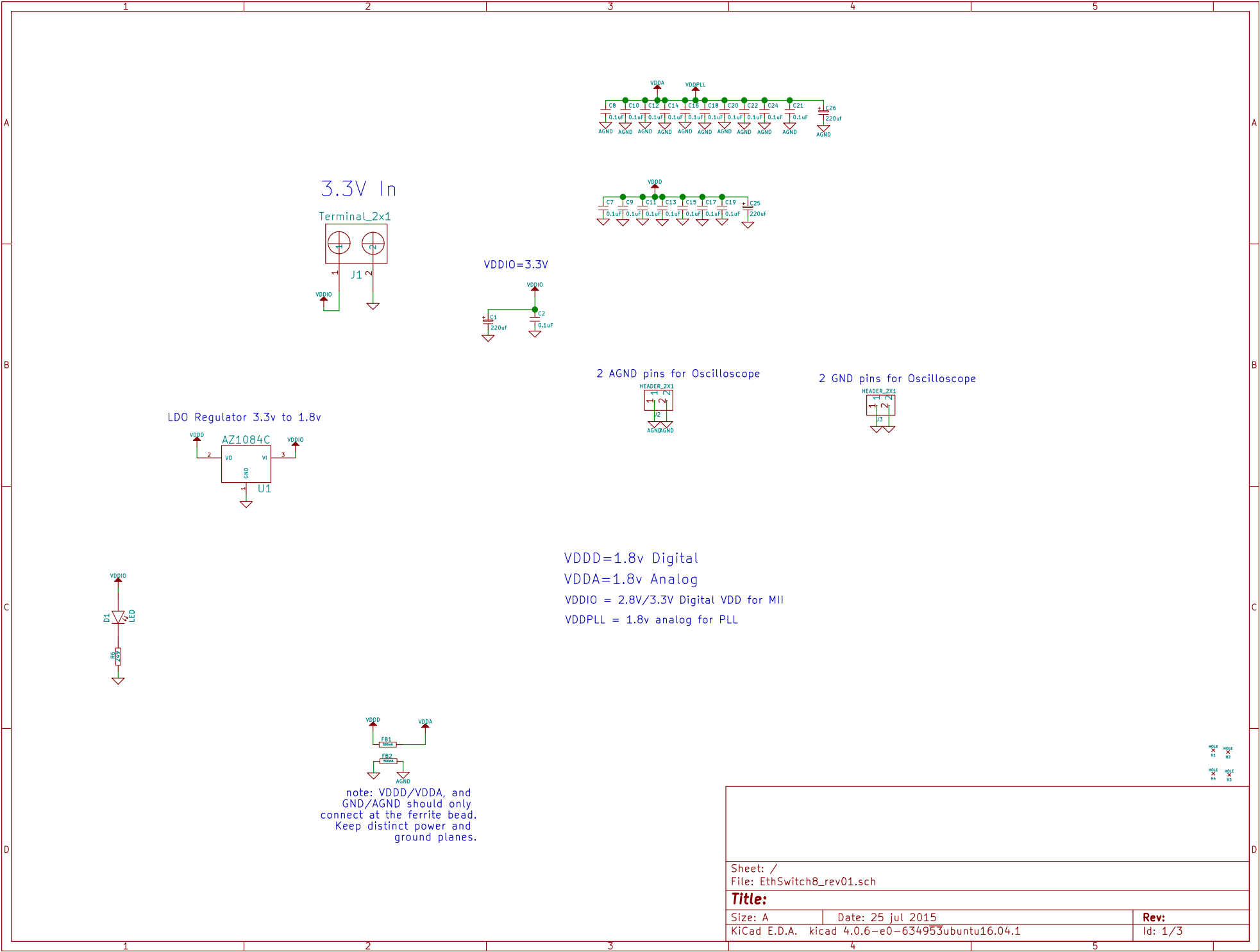
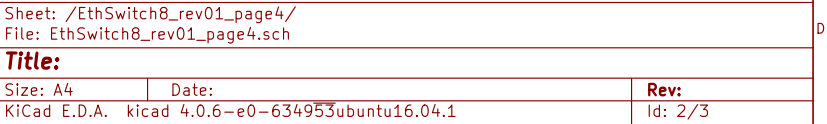


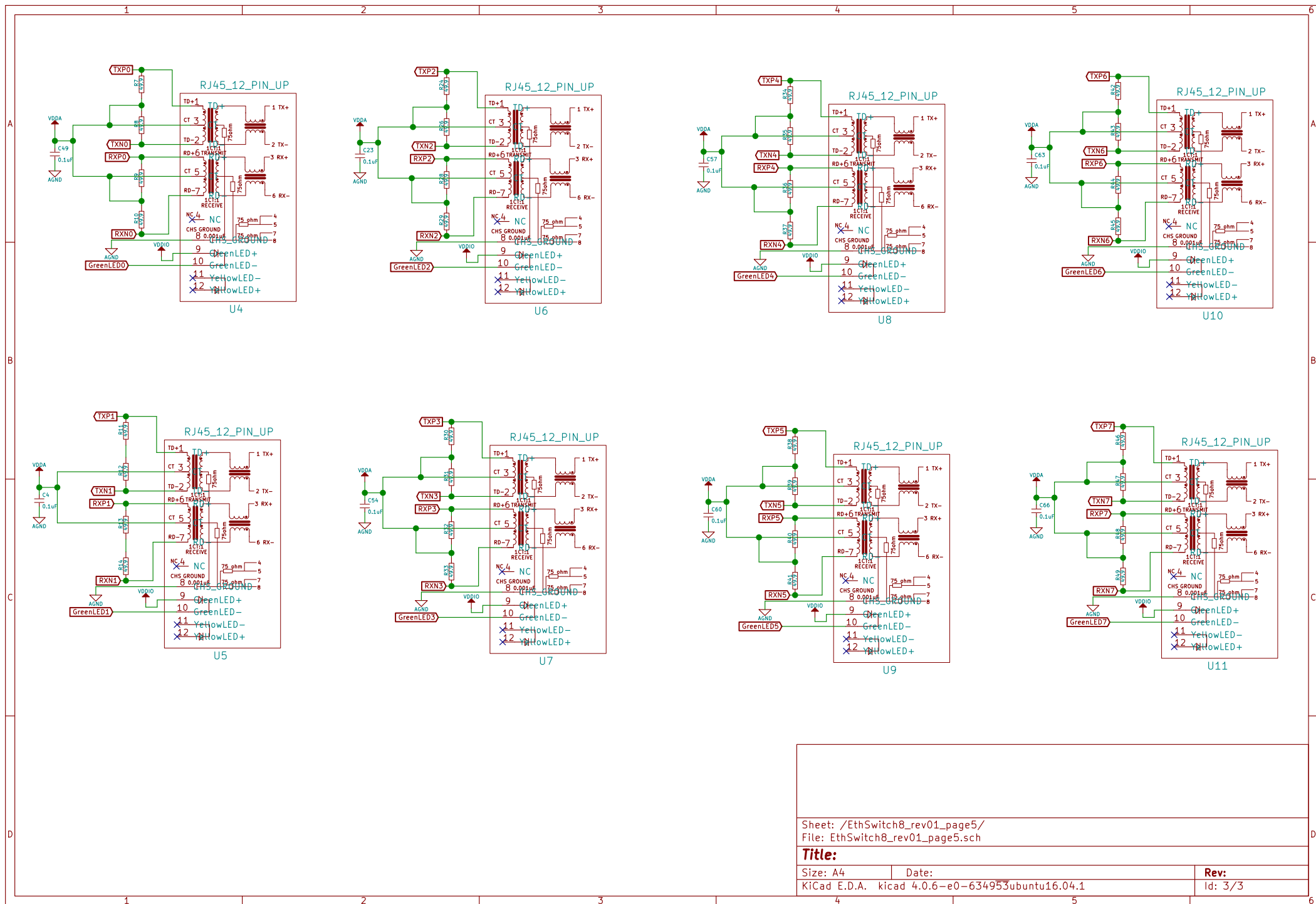
Ethernet = 100Mbps (10ns/bit), SPI = 25Mbps (40ns/bit), I2C (1 Mbaud/400khz clk)



note: VDDD/VDDA, and GND/AGND should only connect at the ferrite bead. Keep distinct power and ground planes.

Sheet: /		
File: EthSwitch8_rev01.sch		
Title:		
Size: A	Date: 25 jul 2015	Rev:
KiCad E.D.A. kicad 4.0.6-e0-634953ubuntu16.04.1		Id: 1/3





Sheet: /EthSwitch8_rev01_page5/
File: EthSwitch8_rev01_page5.sch

Title:			
Size: A4	Date:		
KiCad E.D.A. kicad 4.0.6-e0-634953ubuntu16.04.1		Rev:	Id: 3/3