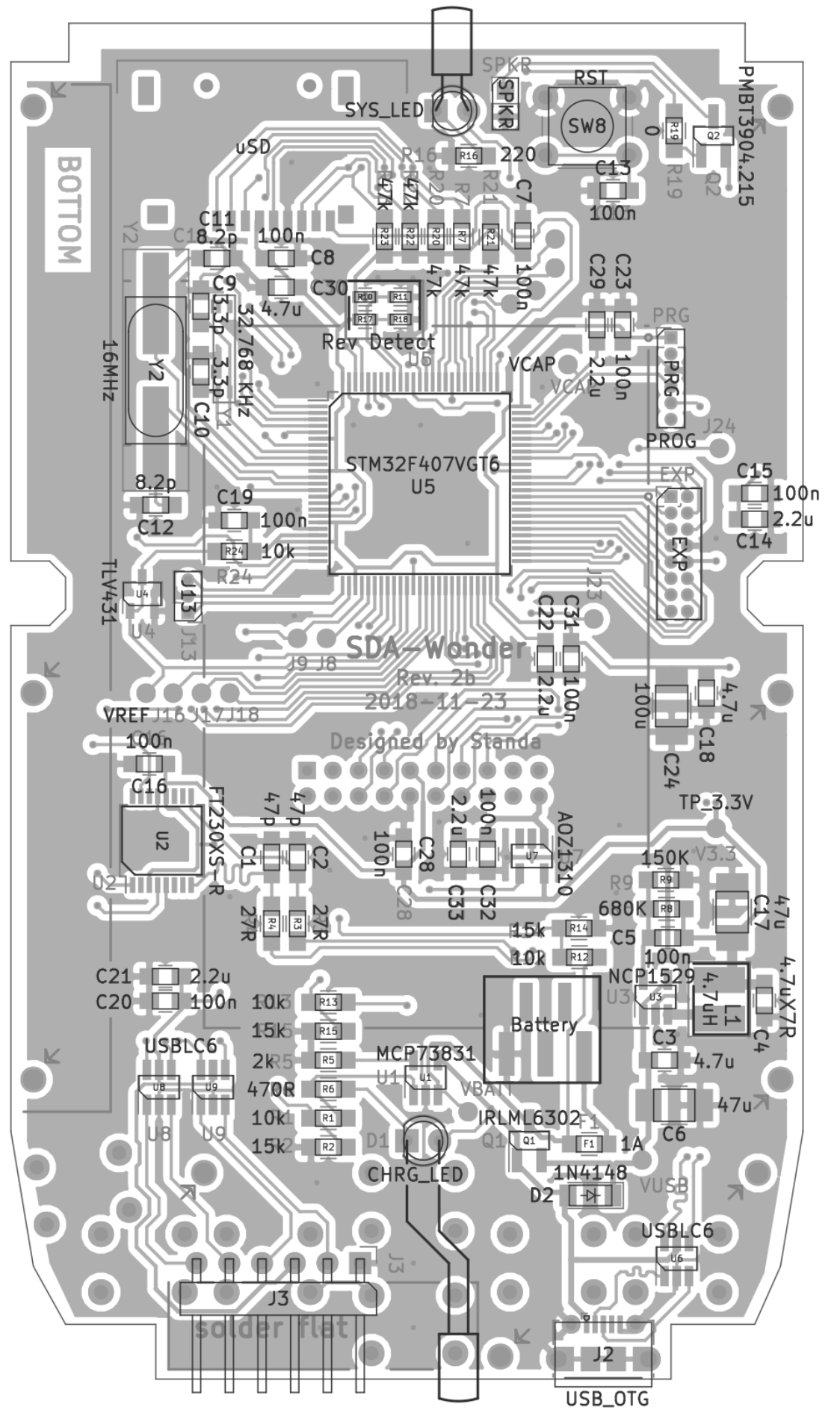


Description	Part	References	Value	Quantity Per PCB
Unpolarized capacitor	C	C5 C7 C8 C13 C15 C16 C19 C20 C23 C28 C31 C32	100n	12
Unpolarized capacitor	C	C24	100u	1
Unpolarized capacitor	C	C14 C21 C22 C29 C33	2.2u	5
Unpolarized capacitor	C	C9 C10	3.3p	2
Unpolarized capacitor	C	C3 C4 C18 C30	4.7u	4
Unpolarized capacitor	C	C1 C2	47p	2
Unpolarized capacitor	C	C6 C17	47u	2
Unpolarized capacitor	C	C11 C12	8.2p	2
Diode	D	D2	1N4148	1
LED generic	LED	D1	CHRG_LED	1
LED generic	LED	D4	SYS_LED	1
Fuse, generic	Fuse	F1	1A	1
Conn_Nokia_BL-5C	Conn_01x03	J1	Battery Connector	1
Generic connector, 01x03	Conn_01x03	J13	CONN_01X03	1
External expansion connector	Conn_01x06	J3	Conn_Bottom_Expansion	1
Internal expansion connector	Conn_02x08	J4	Conn_Internal_Expansion	1
Programming connector	Conn_01x06	J12	PROG	1
SD card slot	uSD-timekillerXtreme	J6	uSD	1
Inductor	L	L1	4.7uH	1
P-Channel MOSFET, SOT-23-3	NTR2101P	Q1	IRLML6302	1
Transistor NPN (general)	Q_NPN_BCE	Q2	PMBT3904.215	1
Resistor	R	R19	0	1
Resistor	R	R1 R12 R13 R24	10k	4
Resistor	R	R9	150k	1
Resistor	R	R2 R14 R15	15k	3
Resistor	R	R16	220	1
Resistor	R	R3 R4	27R	2
Resistor	R	R5	2k	1
Resistor	R	R6	470R	1
Resistor	R	R7 R20 R21 R22 R23	47k	5
Resistor	R	R8	680k	1
Single Pole Single Throw (SPST) switch	SW_SPST	SW8	RST	1
Single Pole Single Throw (SPST) switch	SW_SPST	SW1 - SW7	A, B, L, R, U, D, PWR	7
Cmos switch, SOT23-5	AOZ1310	U7	AOZ1310	1
FTDI usb to serial	FT230XS-R	U2	FT230XS-R	1
Battery management	MCP73831	U1	MCP73831	1
Voltage reg.	NCP1529	U3	NCP1529	1
MCU	STM32F407VGT6	U5	STM32F407VGT6	1
Voltage reference	TLV431	U4	TLV431	1
ESD protection	USBLC6	U6 U8 U9	USBLC6	3
Two pin crystal	Crystal	Y2	16MHz	1
Two pin crystal	Crystal	Y1	32.768 KHz	1



SDA-Wonder Rev2b Assembly docs, Standa 2018
hackaday.io/project/35165-sda-the-best-new-pda
github.com/stanislabvbrtna/SDA_Wonder_HW