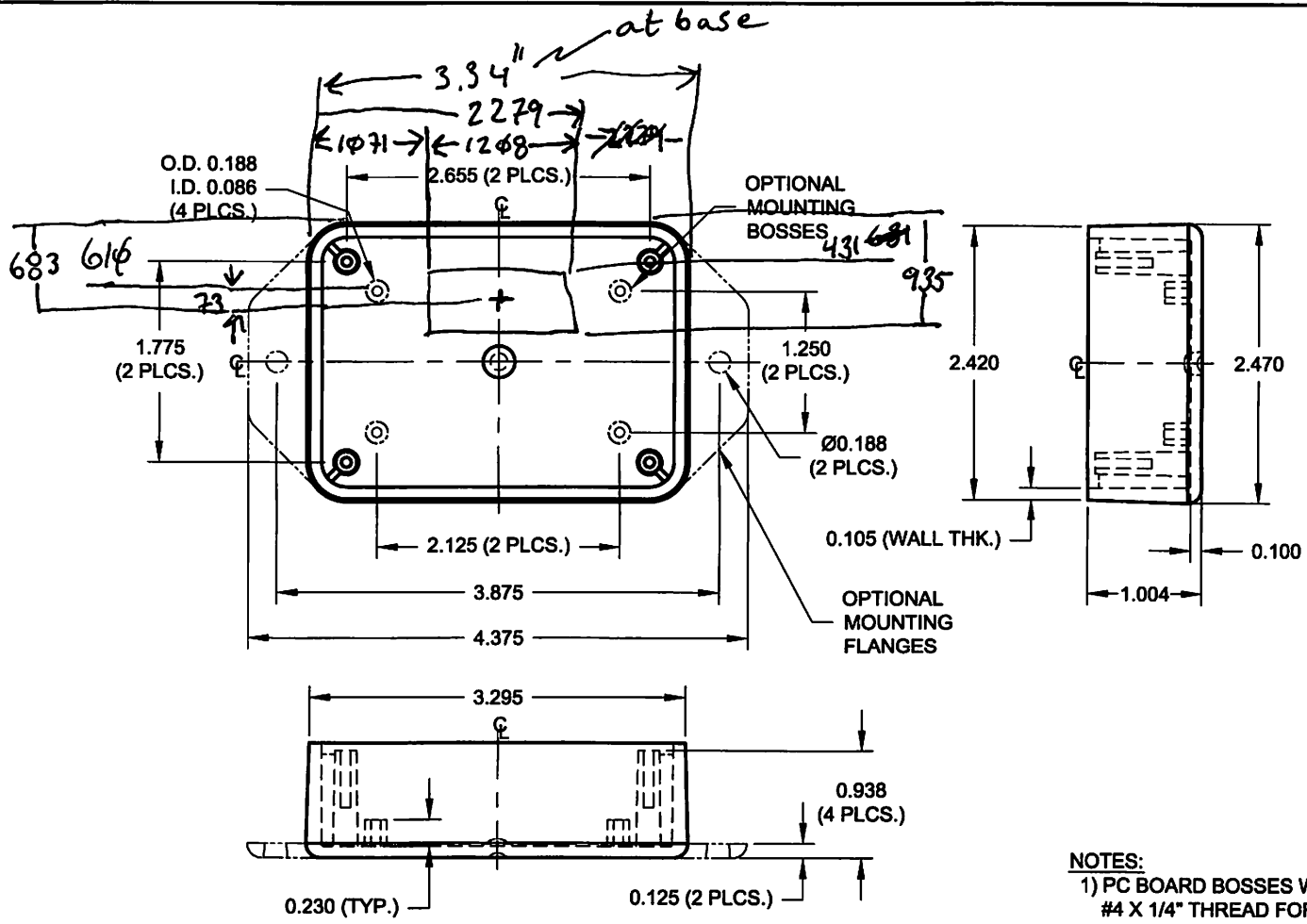


159φ

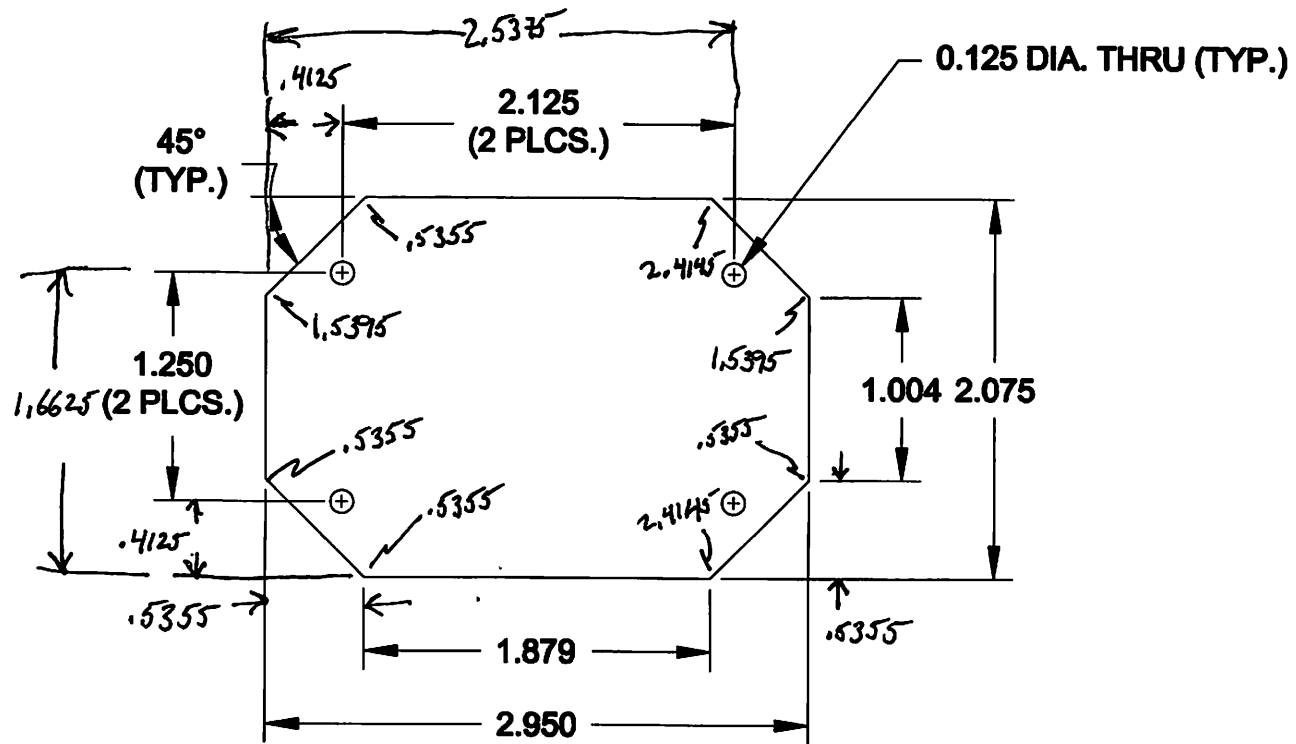
→ R 5 mil

D C_L@1675



NOTES:
 1) PC BOARD BOSES WILL ACCEPT A #4 X 1/4" THREAD FORMING SCREW (SCREWS AVAILABLE FROM POLYCASE)

						DRWN BY	APP. BY	SCALE	DATE
						M.M.T.	B.B.	FULL	07/10/00
						JOB NO:	PRODUCT:		
						LP-21B			
						CUSTOMER:			
						TITLE: PRODUCT DETAIL DRAWING			
REV	DESCRIPTION	BY	CHK	DATE	TOLERANCES UNLESS OTHERWISE SPECIFIED	1305 CHESTER IND. PARKWAY AVON, OHIO 44011 U.S.A. PH# 1-800-348-1223, 440-934-0444 FAX# 440-934-0205 THIS DRAWING AND THE INFORMATION CONTAINED ARE THE PROPERTY OF POLYCASE AND IT IS NOT TO BE REPRODUCED, COPIED OR USED IN ANY WAY DETRIMENTAL TO THE INTEREST OF POLYCASE.			
					X.XX ±.020				
					X.XXX ±.010				



NOTE:

**PC BOARD BOSSES WILL ACCEPT
A #4 X 1/4" SHEET METAL SCREW**

			1305 CHESTER IND. PARKWAY AVON, OHIO 44011-1083 U.S.A. PH#: 1-800-248-1233, 440-934-0444 FAX#: 440-934-0088		DRWN BY R.R.	APP. BY B.B.	SCALE: FULL	DATE: 7/10/00
			TOLERANCES UNLESS OTHERWISE SPECIFIED X.XX=±0.010 X.XXX=±0.005	THIS DRAWING AND THE INFORMATION CONTAINED ARE THE PROPERTY OF POLYCASE AND IT IS NOT TO BE REPRODUCED, COPIED OR USED IN ANY WAY DETRIMENTAL TO THE INTEREST OF POLYCASE		JOB NO: -	PRODUCT: LP-21	
REV DESCRIPTION DATE				CUSTOMER:		TITLE: PC Board Layout		