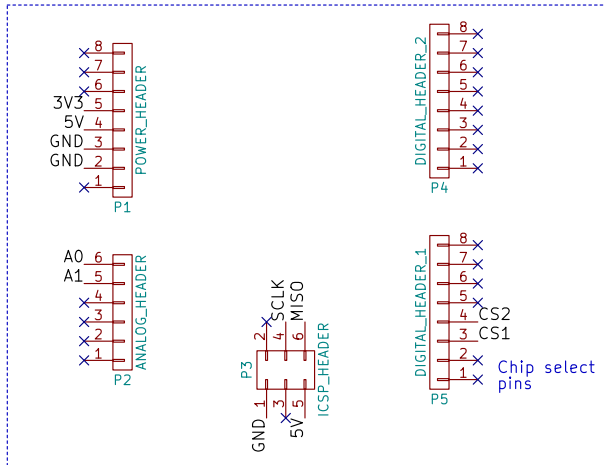
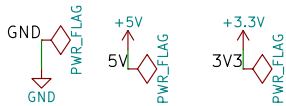


## Arduino Yún connectivity

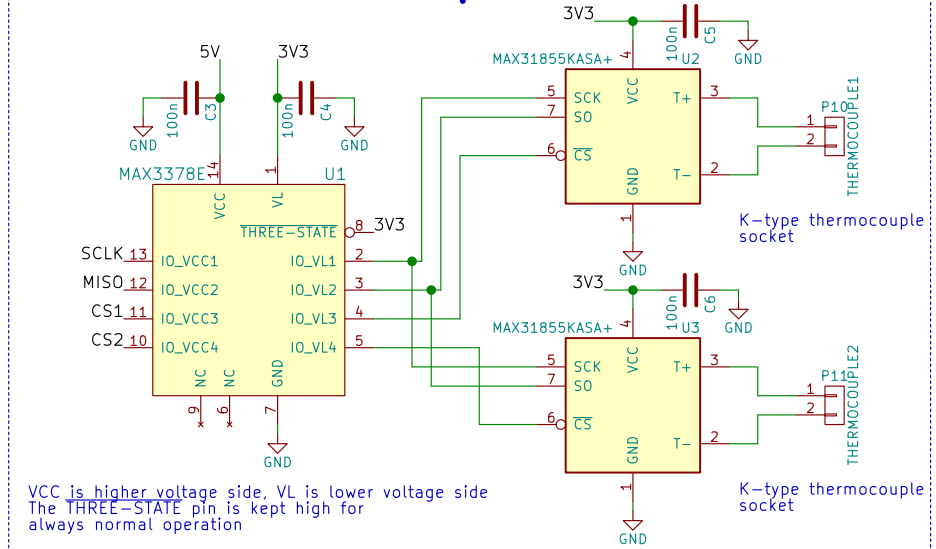


Power lines connected to each other within Arduino (so e.g. should not wire the two 5V pins to each other)

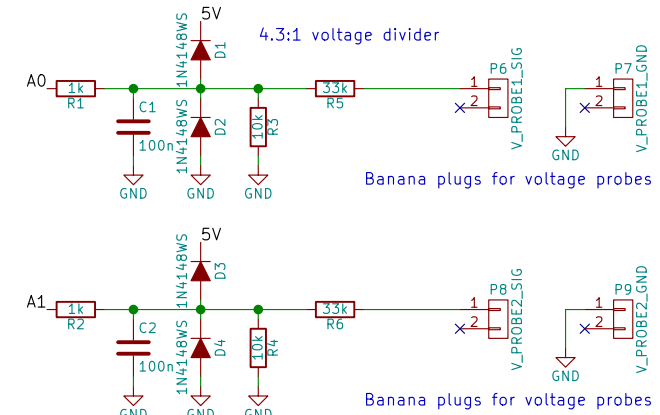
## Power



## Dual thermocouple measurement



## Voltage sense for +12V motherboard



CERN OHL 1.2

**Moonpunch.org**

Sheet: /

File: octelesshield.sch

**Title: Overclocking telemetry shield for Arduino Yún**

Size: A4 | Date: 2016-02-22

KiCad E.D.A. kicad 4.0.2-stable

Rev: v1

Id: 1/1