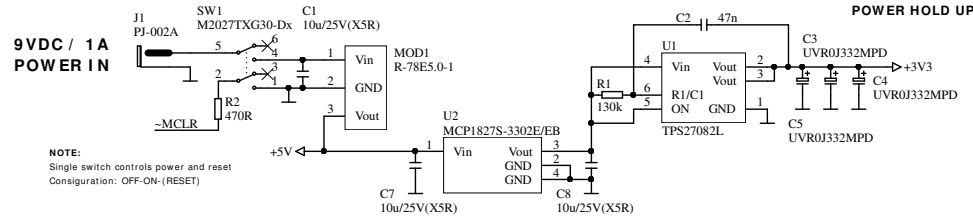
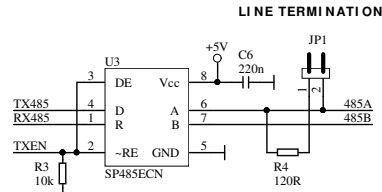


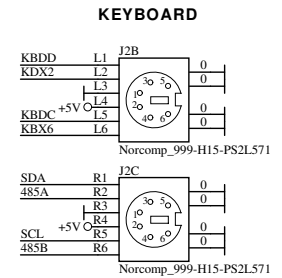
ELLO 16P COMPUTER
r2 (C) 2015 knivd@me.com



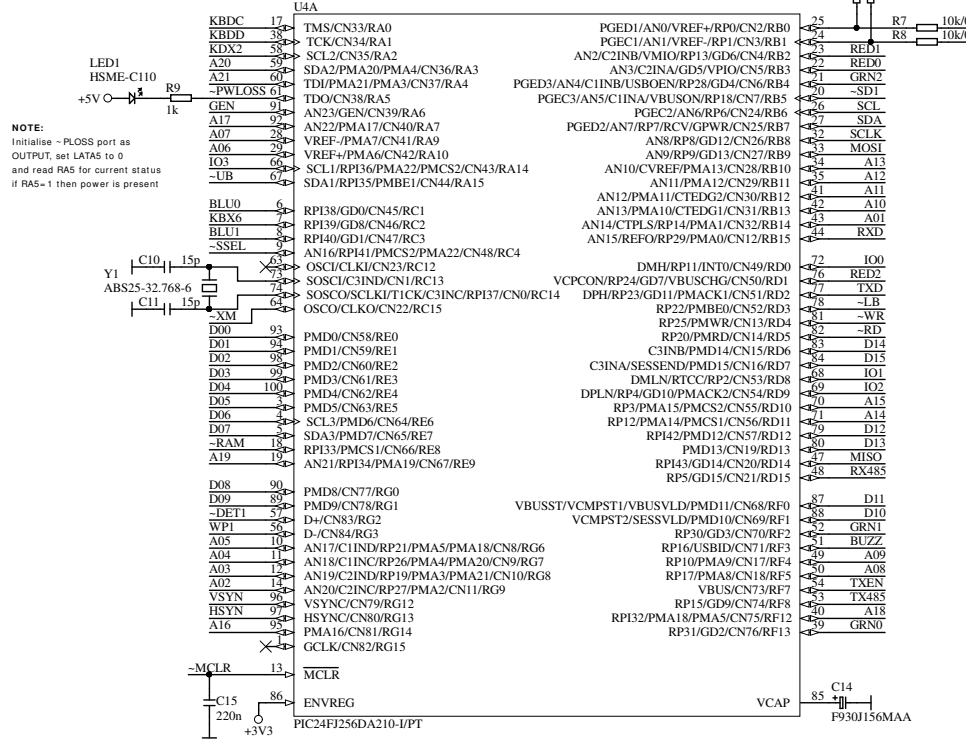
NOTE:
Single switch controls power and reset
Configuration: OFF-ON-(RESET)



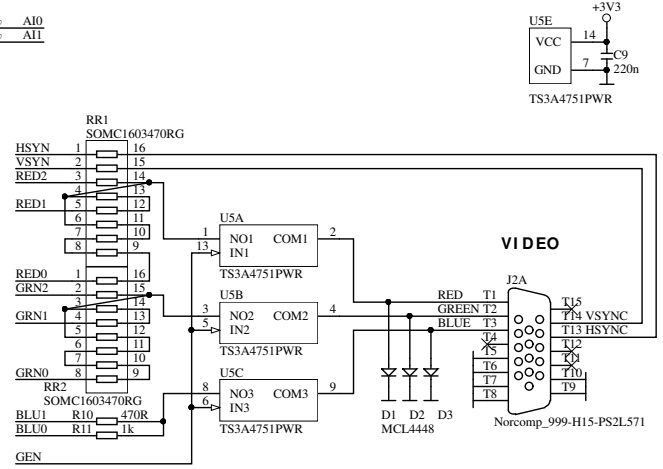
RS-485



I / O PERIPHERALS

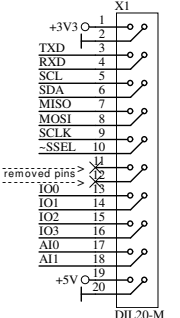


NOTE:
Initialise - PLOSS port as
OUTPUT, set LATAs to 0
and read RA5 for current status
if RA5=1 then power is present

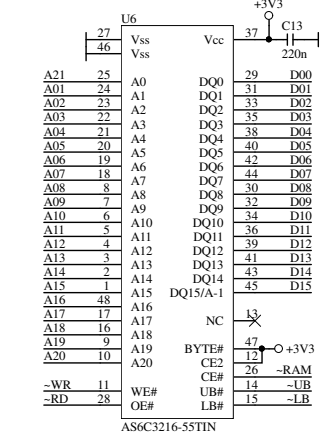
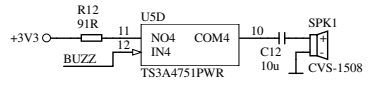


VIDEO

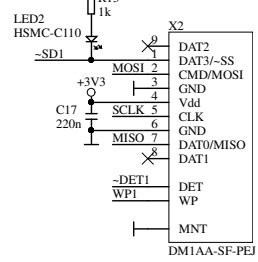
UEXT20



SOUND



SD CARD



ADD-ONS

